

AVE. 296

MINERAL KING AVE.

DISCLAIMER
 THIS MAP WAS PREPARED FOR LOCAL PROPERTY ASSESSMENT PURPOSES ONLY. THE PARCELS SHOWN HEREON MAY NOT COMPLY WITH STATE AND LOCAL SUBDIVISION ORDINANCES. NO LIABILITY IS ASSUMED FOR THE USE OF THE INFORMATION HEREON.

REVISED: 08/13/2015
 REASON: W. SIDE SANTA FE AVE.
 CAD TECH: ASG

HWY. 198

POST MILE 10.40

OVERCROSSING

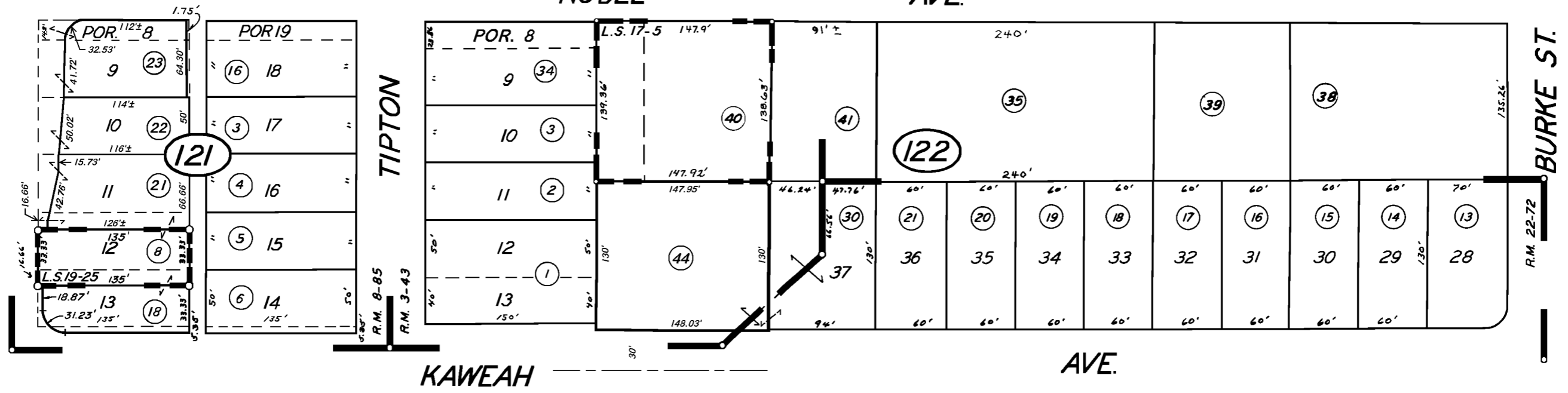


05

13

NOBLE AVE.

SANTA FE AVE.



SHAVERS ADDITION,
 GRIFFIS TRACT,
 POR. WALNUT HOMES ADD. NO. 1,
 RECORD OF SURVEY,
 RECORD OF SURVEY,

R.M. 3 - 43
 R.M. 8 - 85
 R.M. 22 - 72
 L.S. 17 - 5
 L.S. 19 - 25

11

CITY OF VISALIA
 ASSESSOR'S MAPS BK. 97, PG. 12
 COUNTY OF TULARE, CALIF.

NOTE — ASSESSOR'S BLOCK NUMBERS SHOWN IN ELLIPSES
 ASSESSOR'S PARCEL NUMBERS SHOWN IN CIRCLES

