

HWY

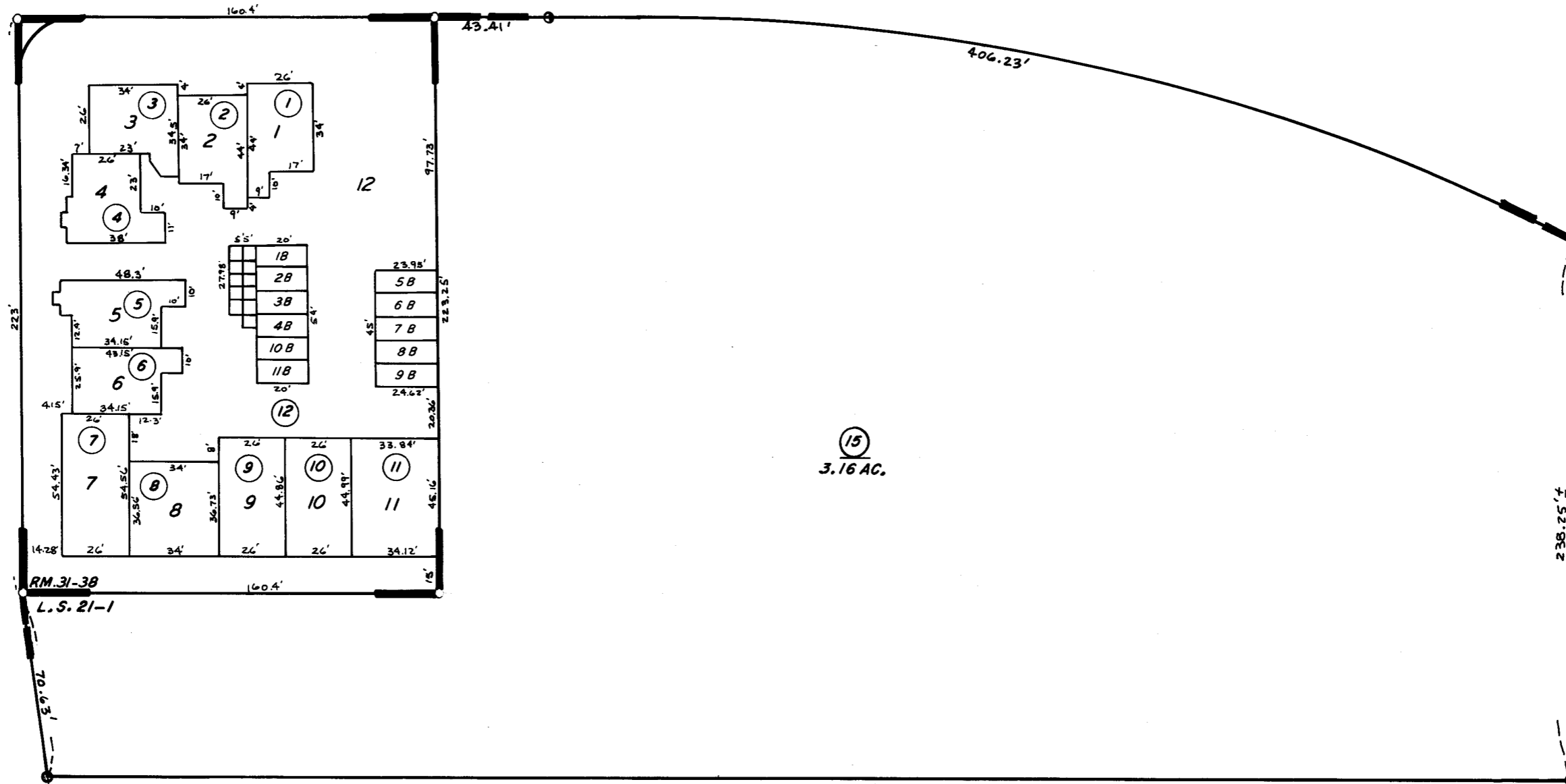
198

NOBLE AVE.

AVE.

EDISON ST.

EDISON ST.



BK 100

S. P. R. R.

SBE 872-54-24AB-73

14

NOBLE VILLA, R.M. 31-38
POR. RECORD OF SURVEY, L.S. 21-1

CITY OF VISALIA
ASSESSOR'S MAPS BK. 97 PG. 33
COUNTY OF TULARE, CALIF.

NOTE-ASSESSOR'S BLOCK NUMBERS SHOWN IN ELLIPSES
ASSESSOR'S PARCEL NUMBERS SHOWN IN CIRCLES