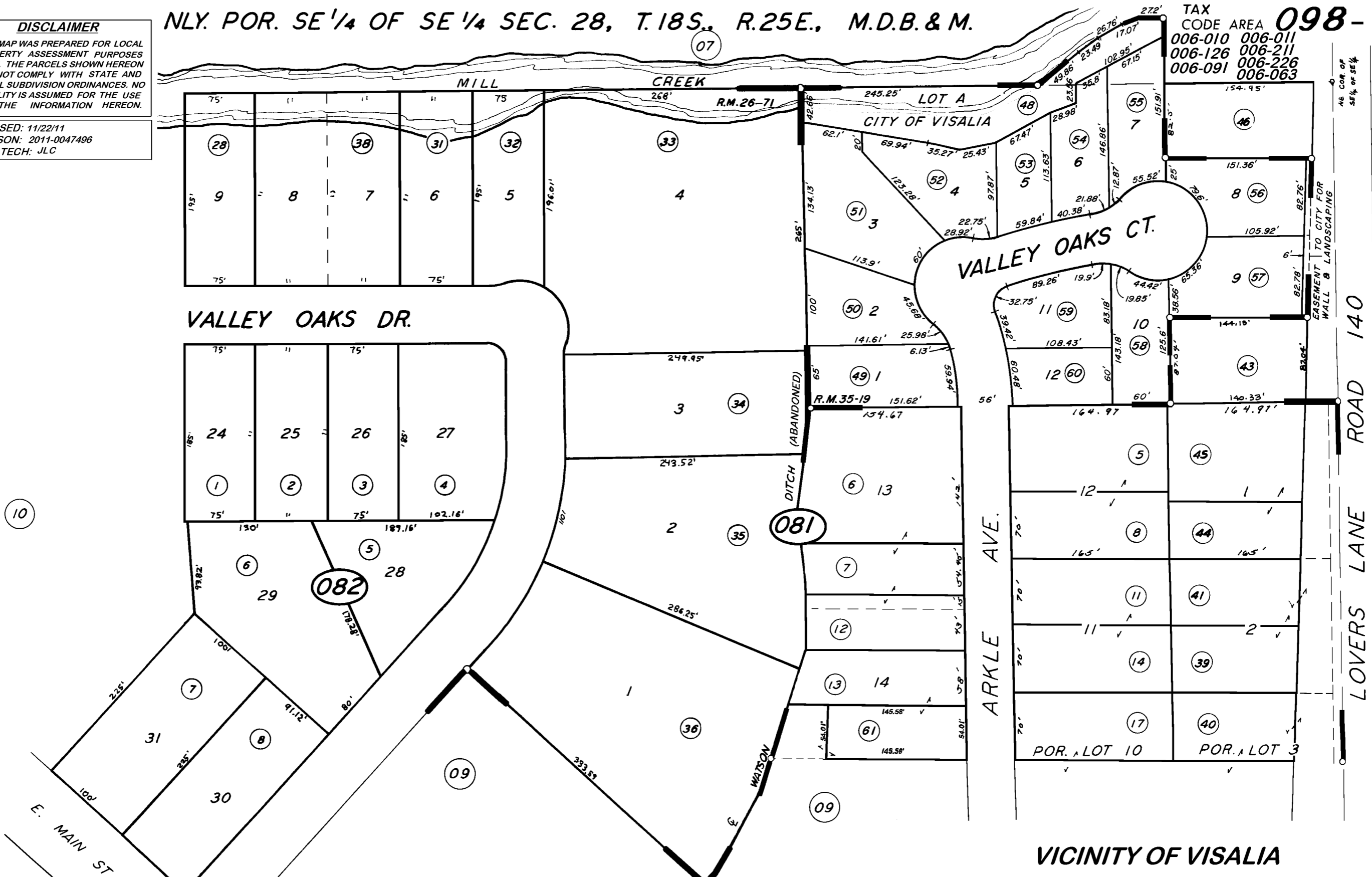


NLY. POR. SE 1/4 OF SE 1/4 SEC. 28, T.18S., R.25E., M.D.B. & M.

TAX CODE AREA **098-08**
 006-010 006-011
 006-126 006-211
 006-091 006-226
 006-063

DISCLAIMER
 THIS MAP WAS PREPARED FOR LOCAL PROPERTY ASSESSMENT PURPOSES ONLY. THE PARCELS SHOWN HEREON MAY NOT COMPLY WITH STATE AND LOCAL SUBDIVISION ORDINANCES. NO LIABILITY IS ASSUMED FOR THE USE OF THE INFORMATION HEREON.
 REVISED: 11/22/11
 REASON: 2011-0047496
 CAD TECH: JLC



POR. PENNEBAKER SUB. NO. 1 R.M. 19-35
 POR. COOPMAN INDUSTRIAL PARK R.M. 26-71
 SPANISH OAKS R.M. 35-19

VICINITY OF VISALIA
 ASSESSOR'S MAPS BK. 098, PG. 08
 COUNTY OF TULARE, CALIF.

NOTE - ASSESSOR'S BLOCK NUMBERS SHOWN IN ELLIPSES
 ASSESSOR'S PARCEL NUMBERS SHOWN IN CIRCLES

