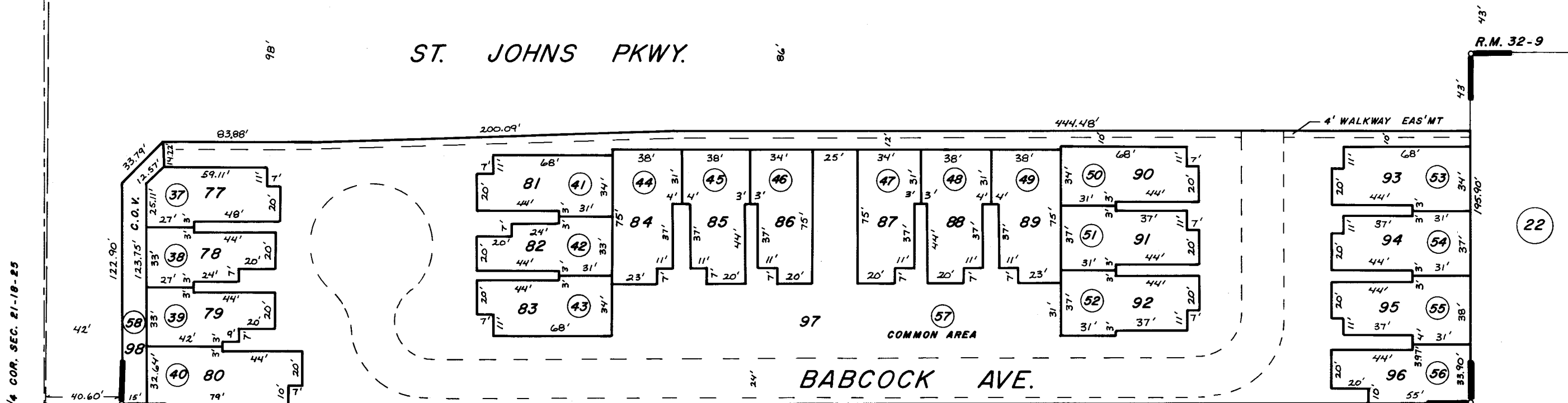
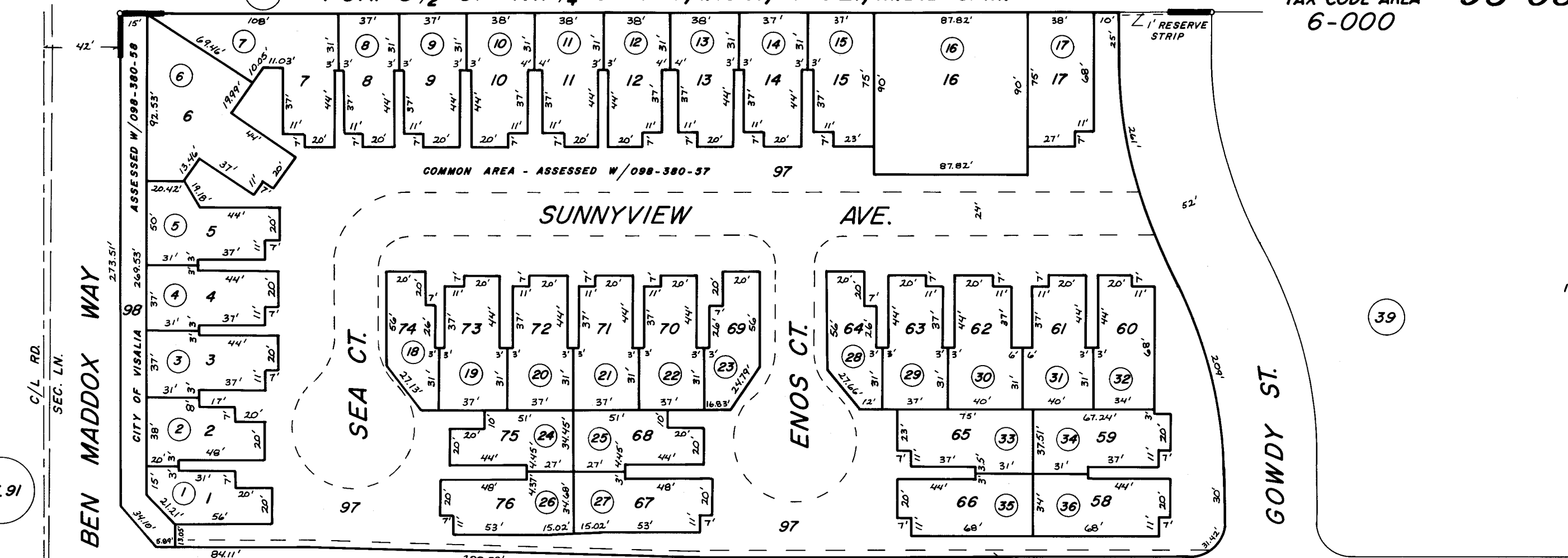


POR. S 1/2 OF NW 1/4 SEC. 21, T.18S., R.25E., M.D.B. & M.

TAX CODE AREA
6-000

98-38



POR. SAINT JOHNS BY THE RIVER R.M. 32-9

22

ASSESSOR'S MAPS BK. 98 PG. 38
CITY OF VISALIA
COUNTY OF TULARE, CALIF.

NOTE-ASSESSOR'S BLOCK NUMBERS SHOWN IN ELLIPSES
ASSESSOR'S PARCEL NUMBERS SHOWN IN CIRCLES