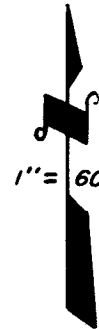
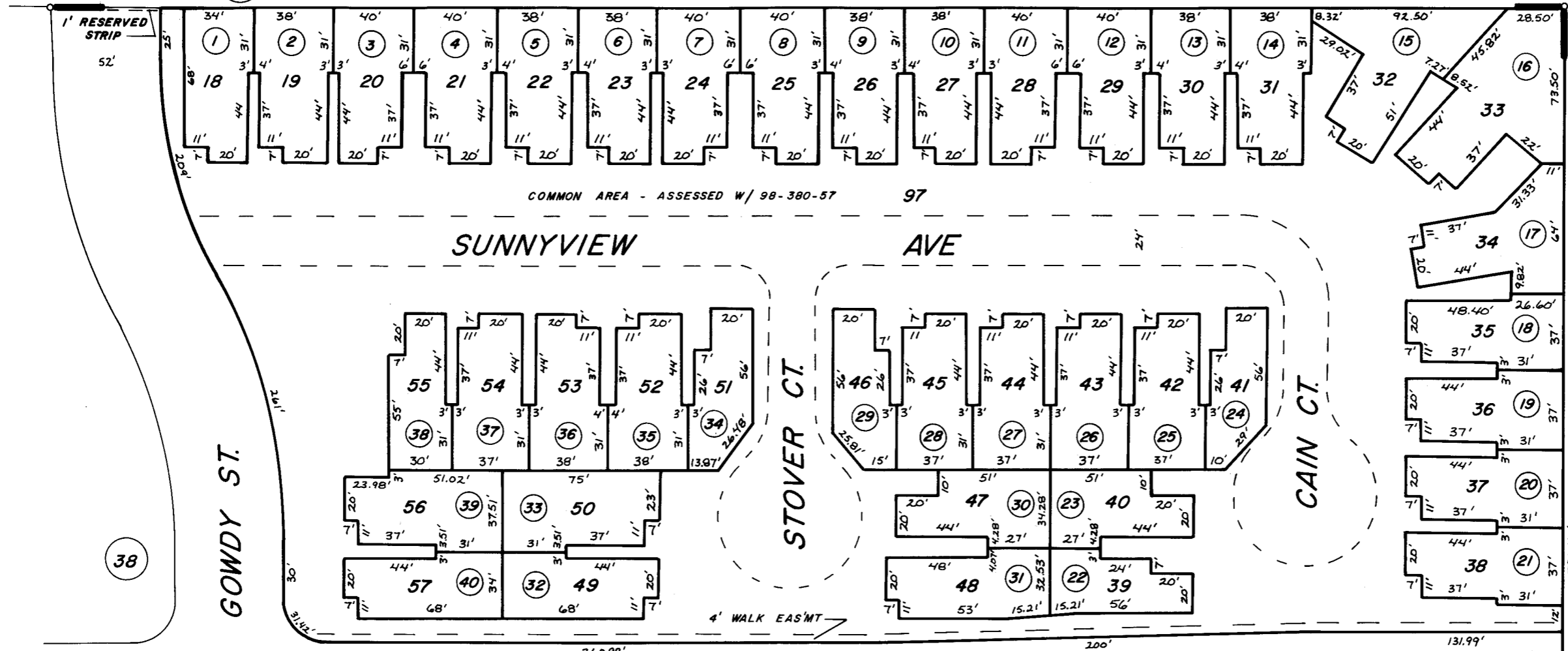


22

POR. NW 1/4 OF SEC. 21, T.18S., R. 25E., M. D. B. & M.

TAX CODE AREA
6-000

98-39



38

22

22

POR. SAINT JOHNS BY THE RIVER R.M. 32-9

ASSESSOR'S MAPS BK. 98 PG. 39
CITY OF VISALIA
COUNTY OF TULARE, CALIF.

NOTE-ASSESSOR'S BLOCK NUMBERS SHOWN IN ELLIPSES
ASSESSOR'S PARCEL NUMBERS SHOWN IN CIRCLES