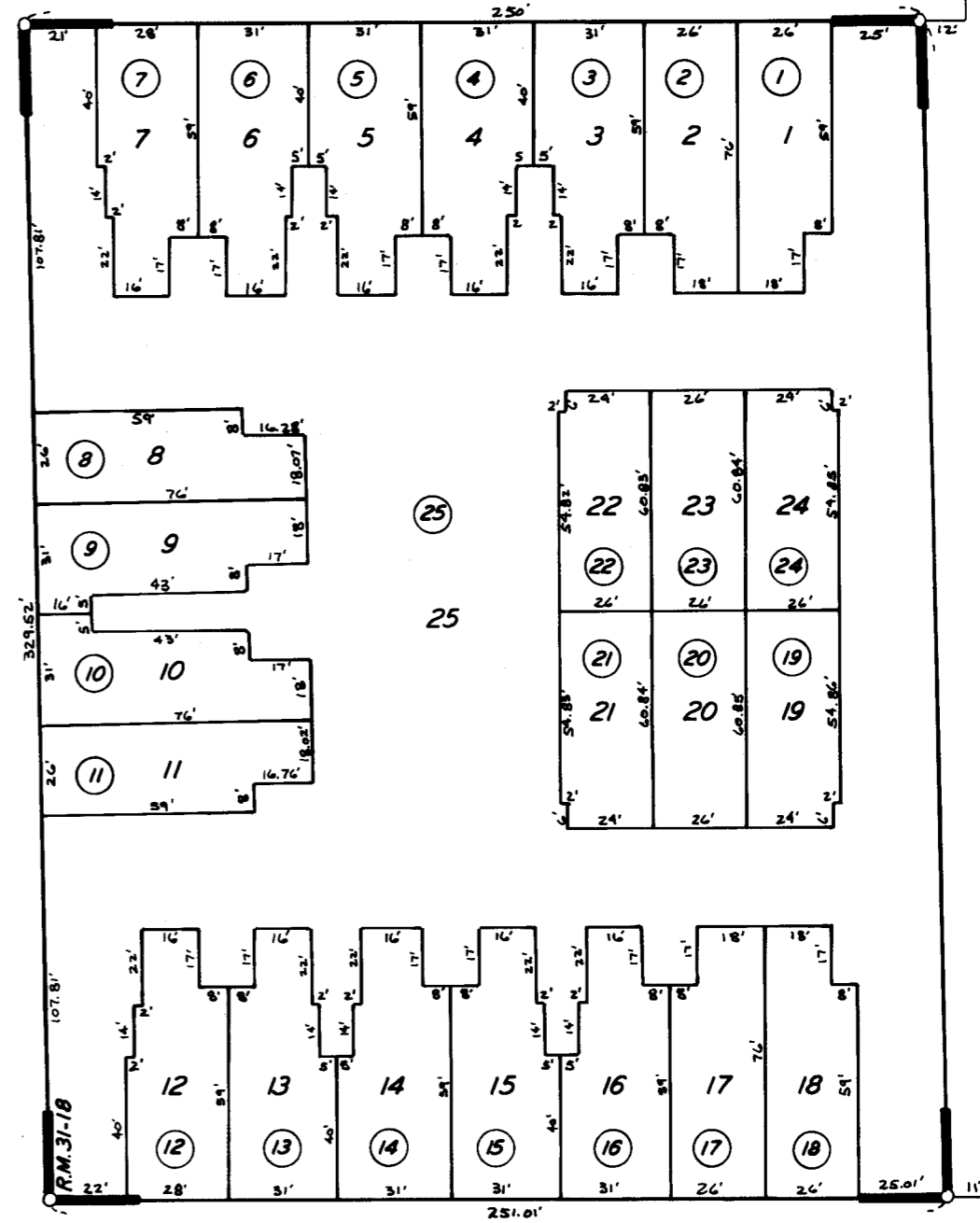


04

05

05



PINKHAM SQUARE

R.M.31-18

CITY OF VISALIA
ASSESSOR'S MAPS BK. 100 PG. 27
COUNTY OF TULARE, CALIF.

NOTE—ASSESSOR'S BLOCK NUMBERS SHOWN IN ELLIPSES
ASSESSOR'S PARCEL NUMBERS SHOWN IN CIRCLES