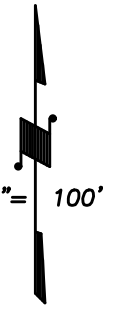
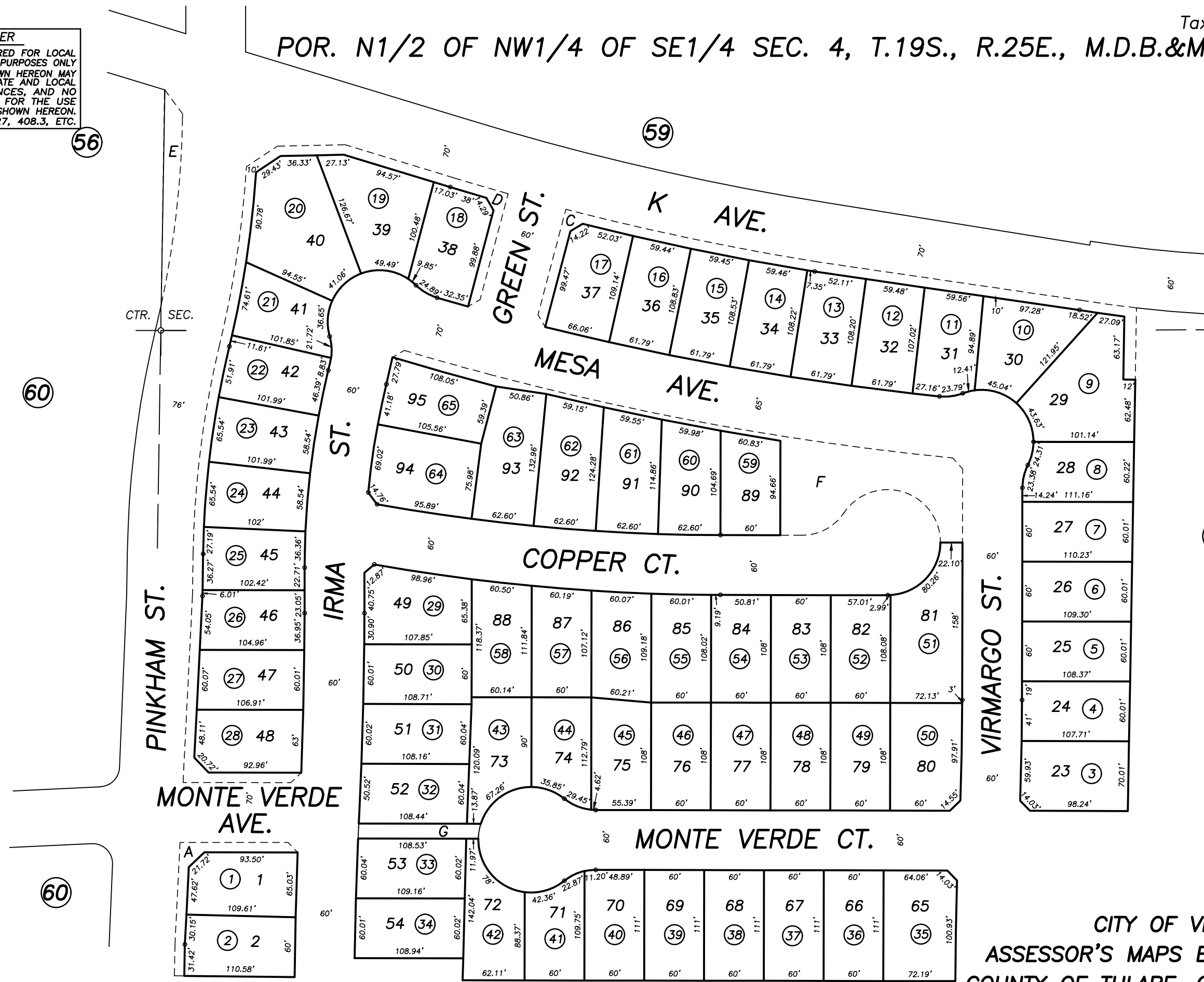


POR. N1/2 OF NW1/4 OF SE1/4 SEC. 4, T.19S., R.25E., M.D.B.&M.

DISCLAIMER
THIS MAP WAS PREPARED FOR LOCAL PROPERTY ASSESSMENT PURPOSES ONLY AND THE PARCELS SHOWN HEREON MAY NOT COMPLY WITH STATE AND LOCAL SUBDIVISION ORDINANCES, AND NO LIABILITY IS ASSUMED FOR THE USE OF THE INFORMATION SHOWN HEREON. R & T CODE SEC. 327, 408.3, ETC.



BASIS OF BEARINGS:
R.M. 44-86
N1/4 COR. SE1/4



CITY OF VISALIA
ASSESSOR'S MAPS BK. 100 , PG. 75
COUNTY OF TULARE, CALIFORNIA, U.S.A.

POR. VISTA DEL SOL, R.M. 44-86

NOTE: Assessor's Parcel Numbers Shown in Circles
Assessor's Block Numbers Shown in Ellipses

2022-0022226	02/02/2023	JOS
REVISION	DATE	TECH