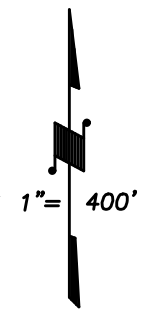
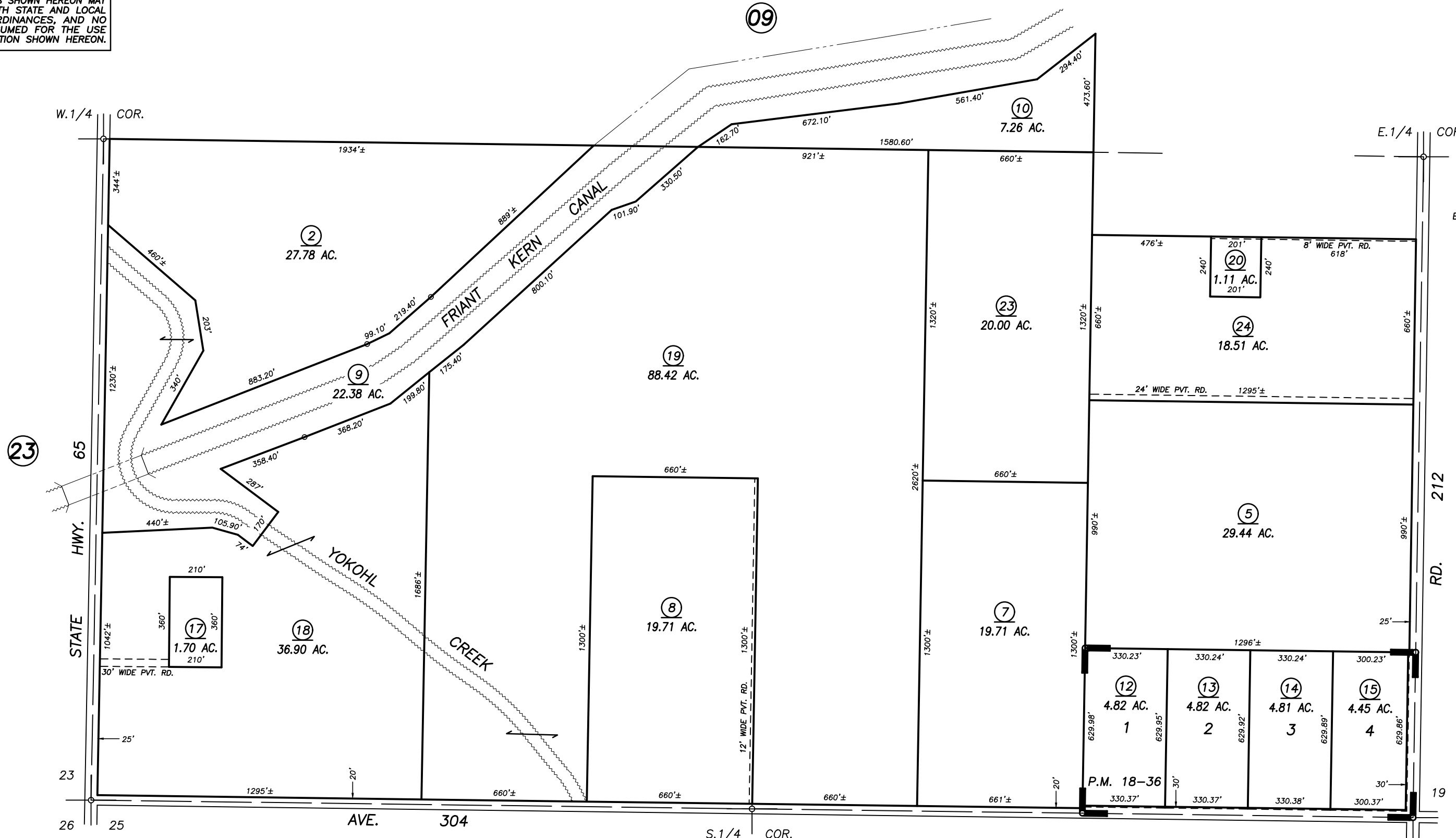


DISCLAIMER

THIS MAP WAS PREPARED FOR LOCAL PROPERTY ASSESSMENT PURPOSES ONLY AND THE PARCELS SHOWN HEREON MAY NOT COMPLY WITH STATE AND LOCAL SUBDIVISION ORDINANCES, AND NO LIABILITY IS ASSUMED FOR THE USE OF THE INFORMATION SHOWN HEREON.

S1/2 SEC.24, T.18S., R.26E., M.D.B.&M.

Tax Area Codes 112-10
133-004



BASIS OF BEARINGS:
P.M. 18-36

PARCEL MAP 1735, P.M. 18-36

VICINITY OF LINDCOVE
ASSESSOR'S MAPS BK. 112 , PG. 10
COUNTY OF TULARE, STATE OF CALIFORNIA, U.S.A.

NOTE: Assessor's Parcel Numbers Shown in Circles (1) (123)
Assessor's Block Numbers Shown in Ellipses

2001-0059548	04/07/2003	PHN
REVISION	DATE	TECH