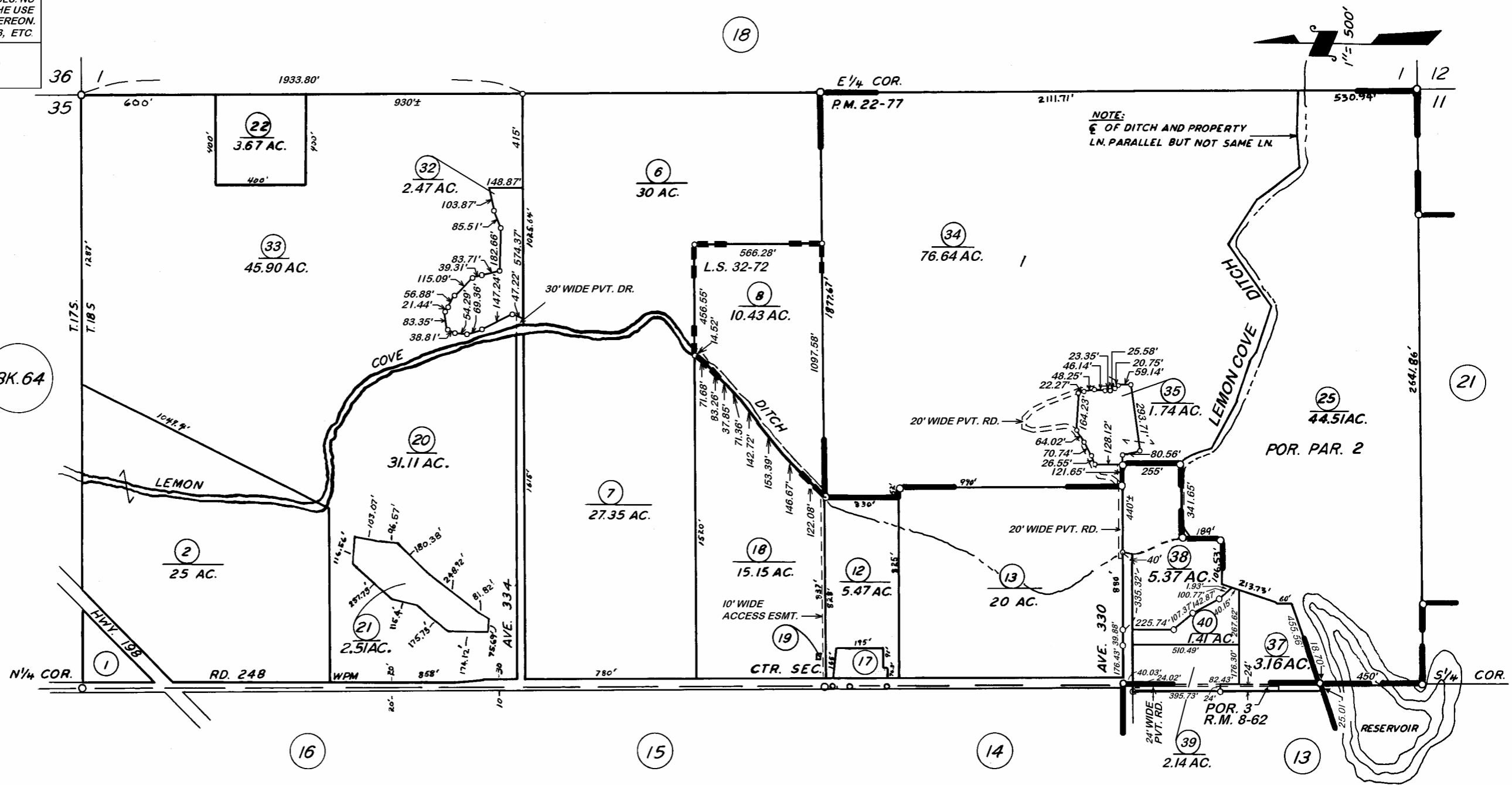


DISCLAIMER
 THIS MAP WAS PREPARED FOR LOCAL PROPERTY ASSESSMENT PURPOSES ONLY. THE PARCELS SHOWN HEREON MAY NOT COMPLY WITH STATE AND LOCAL SUBDIVISION ORDINANCES. NO LIABILITY IS ASSUMED FOR THE USE OF THE INFORMATION HEREON. R & T CODE SEC. 327, 408.3, ETC.

REVISED: 9/19/2019
 REASON: 2019-0041681
 CAD TECH: NFL



POR. GOODALE SUBDIVISION, R.M. 8-62
 POR. PARCEL MAP 2176, P.M. 22-77 (HWY. 245)
 POR. RECORD OF SURVEY, L.S. 17-71
 RECORD OF SURVEY, L.S. 32-72

VICINITY OF LEMON COVE
 ASSESSOR'S MAPS BK. 113, PG. 17
 COUNTY OF TULARE, CALIF.

NOTE — ASSESSOR'S BLOCK NUMBERS SHOWN IN ELLIPSES
 ASSESSOR'S PARCEL NUMBERS SHOWN IN CIRCLES