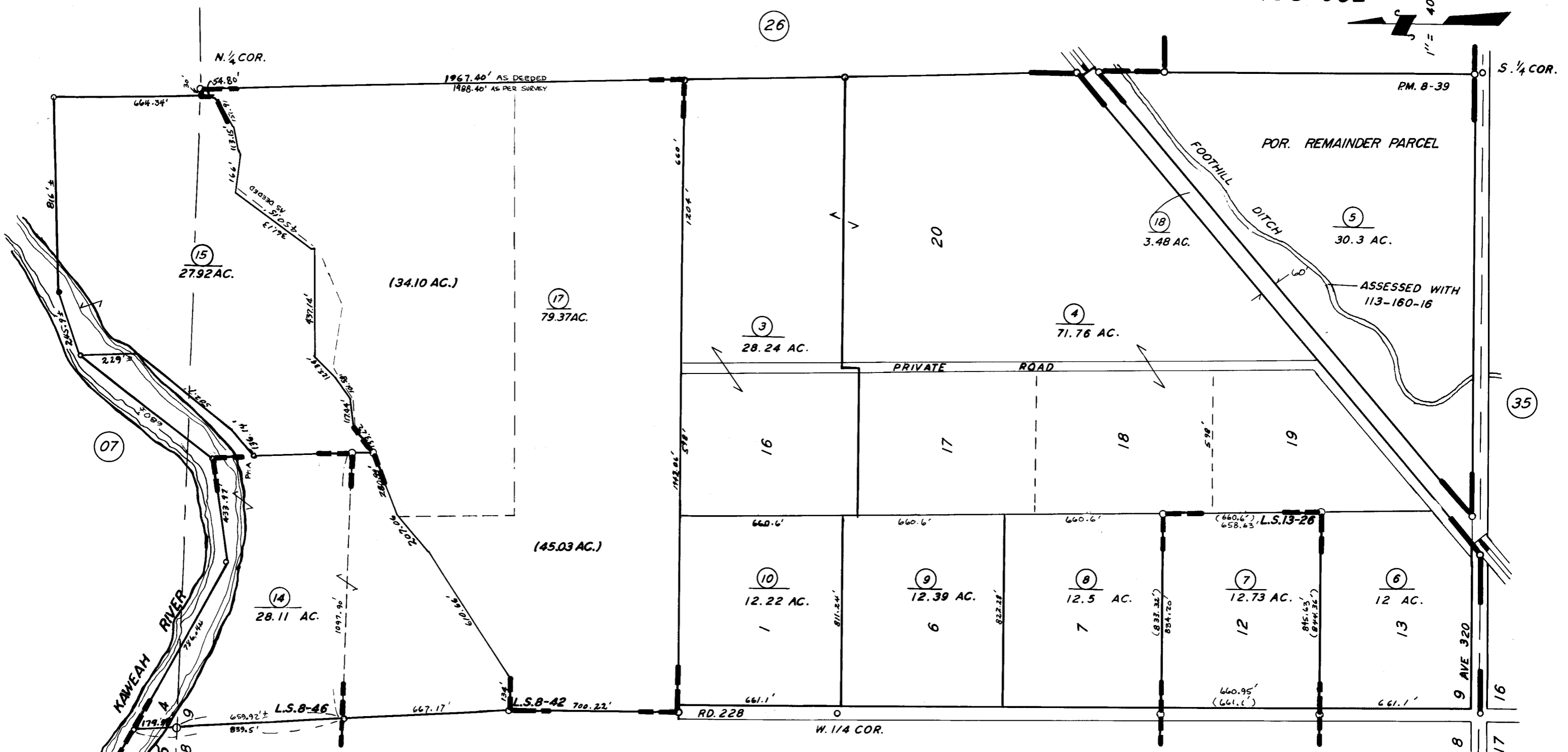
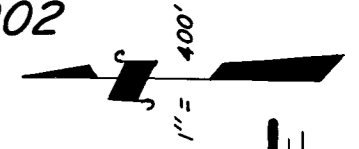


W 1/2 OF SEC. 9, T.18S., R.27E., M. D. B. & M.
 POR. SW 1/4 SEC. 4, T.18S., R.27E. M. D. B. & M.

TAX CODE AREA **113-27**
 133-001
 133-002



POR. KERN-GOODALE SUB.
 RECORD OF SURVEY,
 POR. RECORD OF SURVEY,
 POR. RECORD OF SURVEY,
 POR. PARCEL MAP 739,

R.M. 16-52
 L.S. 8-42
 L.S. 8-46
 L.S. 13-26
 P.M. 8-39

ASSESSOR'S MAPS BK. 113, PG. 27.
 COUNTY OF TULARE, CALIF.

NOTE — ASSESSOR'S BLOCK NUMBERS SHOWN IN ELLIPSES
 ASSESSOR'S PARCEL NUMBERS SHOWN IN CIRCLES

