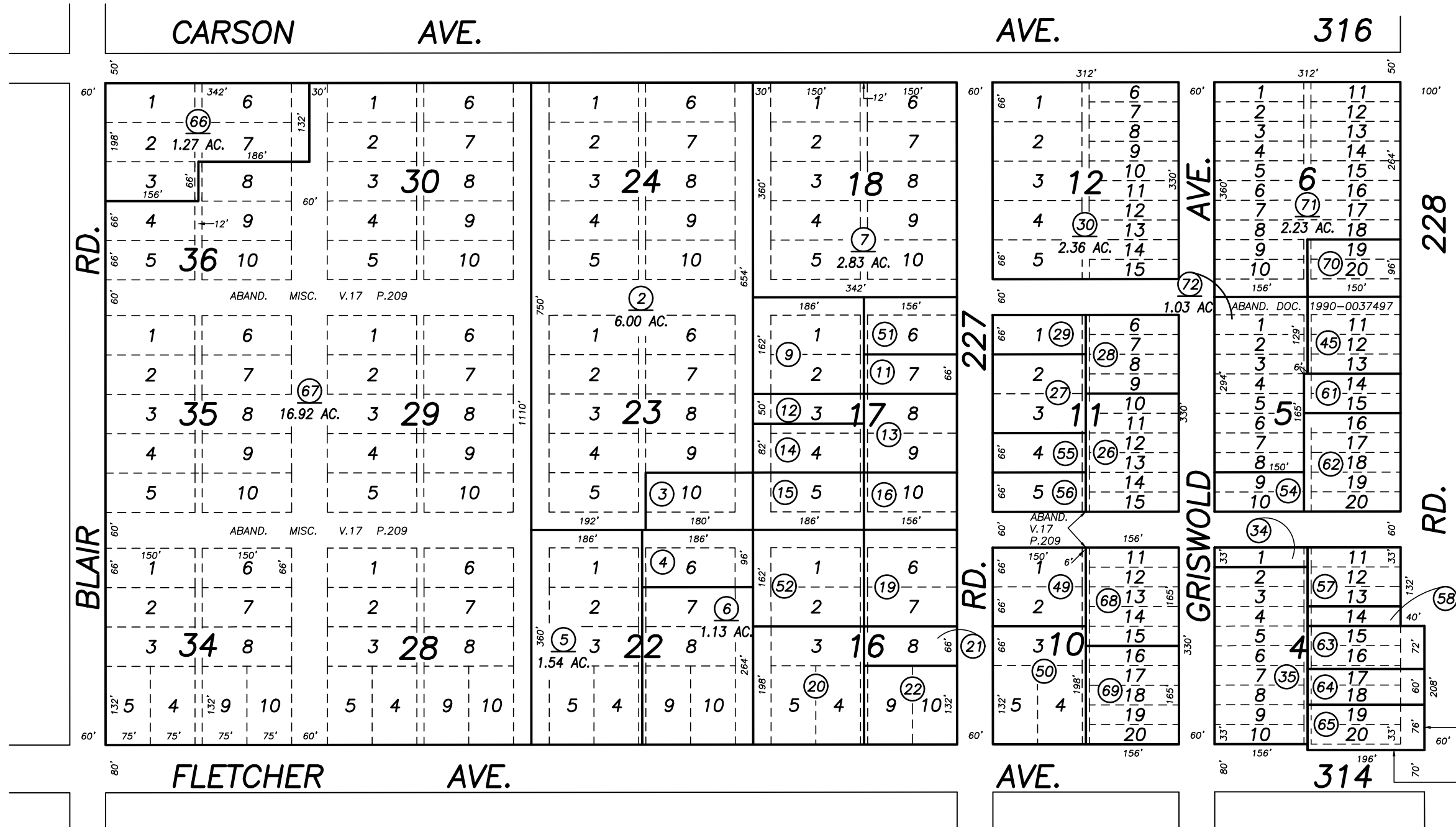
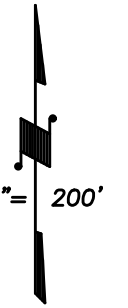


DISCLAIMER
 THIS MAP WAS PREPARED FOR LOCAL PROPERTY ASSESSMENT PURPOSES ONLY AND THE PARCELS SHOWN HEREON MAY NOT COMPLY WITH STATE AND LOCAL SUBDIVISION ORDINANCES, AND NO LIABILITY IS ASSUMED FOR THE USE OF THE INFORMATION SHOWN HEREON. R & T CODE SEC. 327, 408.3, ETC.

N 1/2 OF S. 2400 FT. OF E. 2242 FT. SEC. 17, T.18S., R.27E., M.D.B.& M.

Tax Area Code 113-32
 133-009

33



30

34

POR. TOWNSITE OF LINDCOVE, R.M. 7-54

31

VICINITY OF LINDCOVE
 ASSESSOR'S MAPS BK. 113 , PG. 32
 COUNTY OF TULARE, CALIFORNIA, U.S.A.

NOTE: Assessor's Parcel Numbers Shown in Circles
 Assessor's Block Numbers Shown in Ellipses

1 123

2015-0059378	12/14/2015	GL
REVISION	DATE	TECH