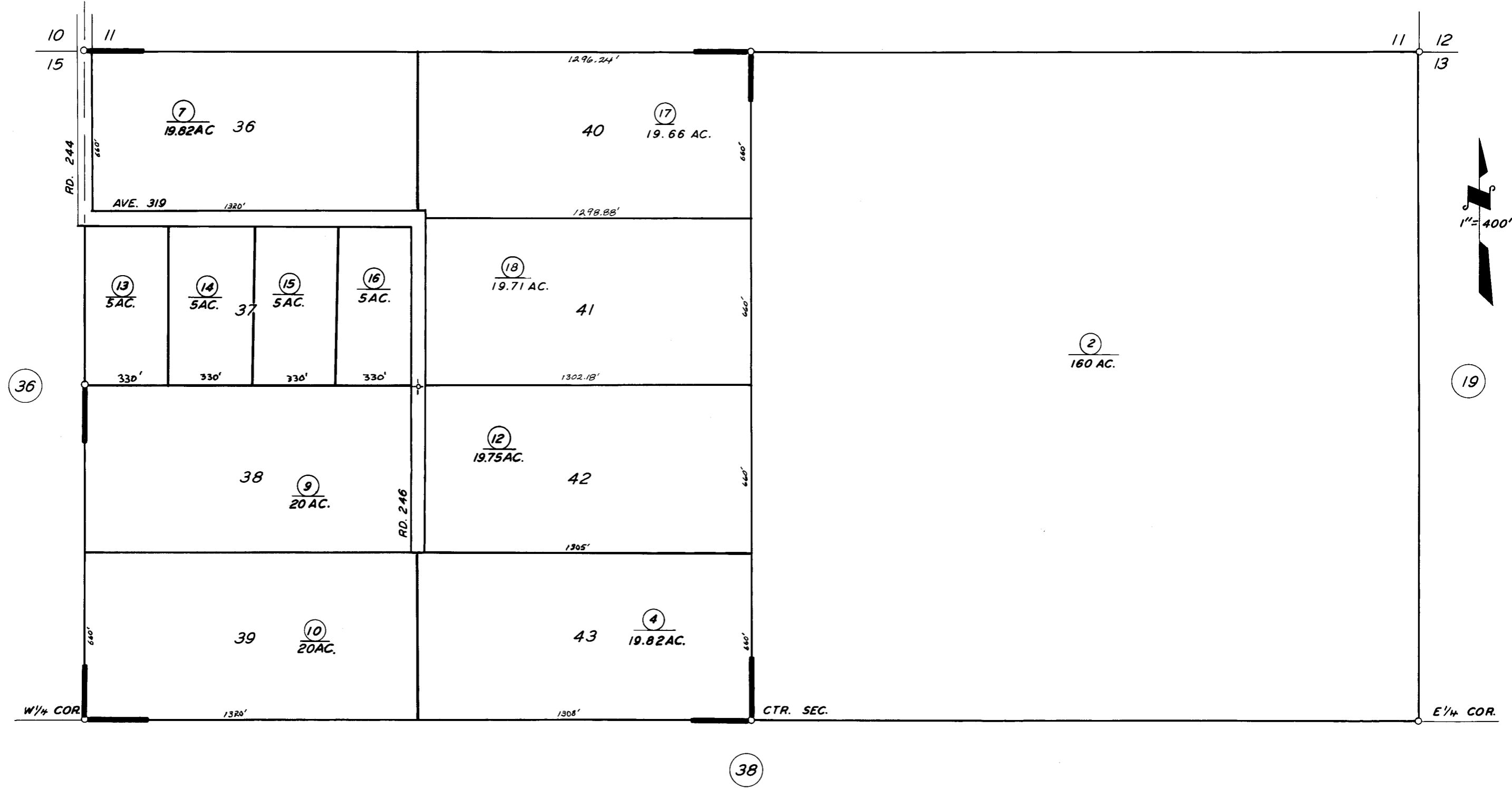


20



POR. WALLACE RANCH

R.M. 8-20

ASSESSOR'S MAPS BK. 113, PG. 39

COUNTY OF TULARE, CALIF.

NOTE — ASSESSOR'S BLOCK NUMBERS SHOWN IN ELLIPSES
ASSESSOR'S PARCEL NUMBERS SHOWN IN CIRCLES

