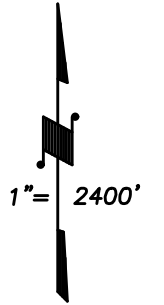


SEC'S 23 TO 26 & 34 TO 36, T.18S., R.27E., M.D.B.&M.

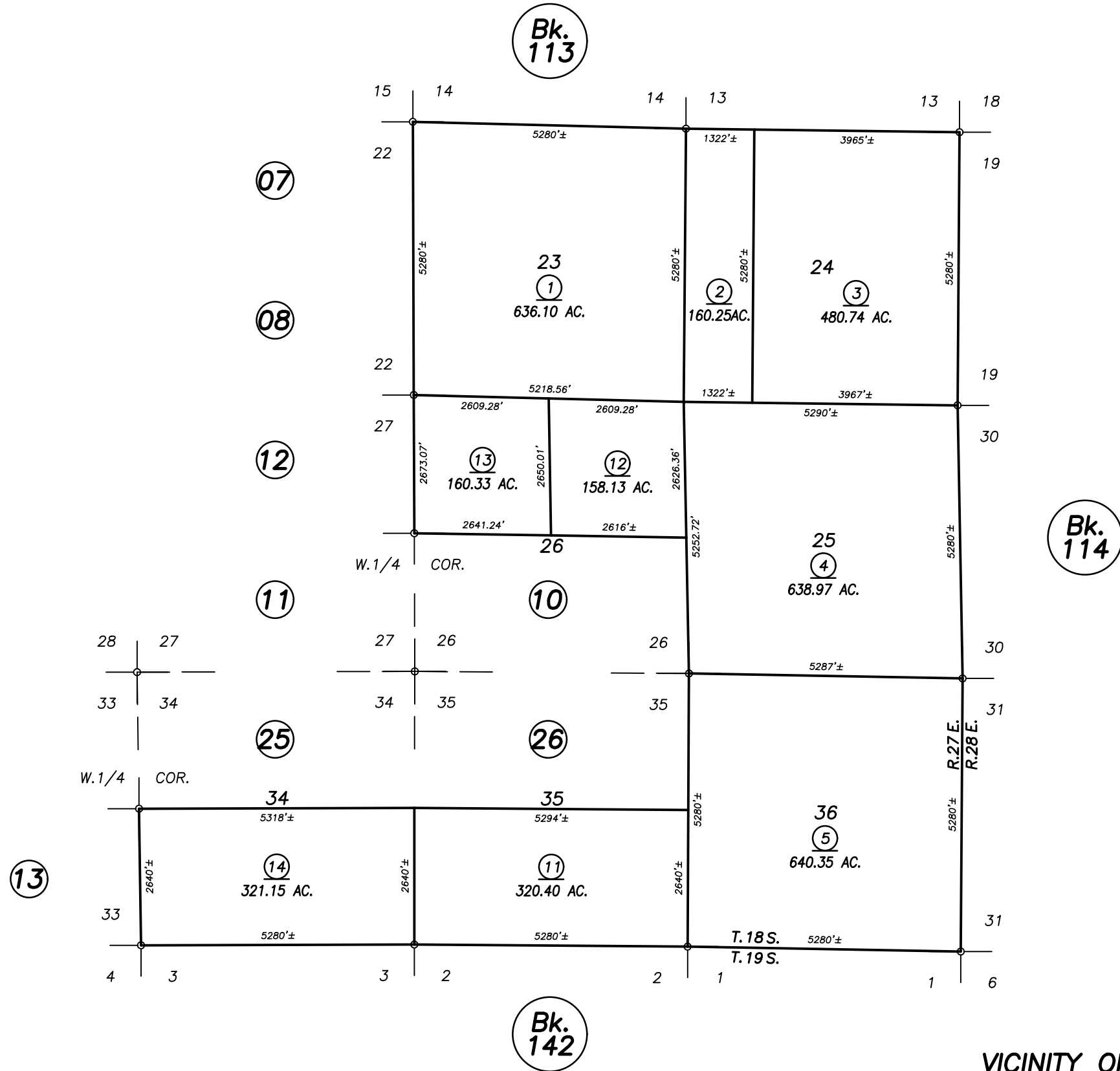
Tax Area Codes 115-09

086-004
133-002
133-007

DISCLAIMER
THIS MAP WAS PREPARED FOR LOCAL PROPERTY ASSESSMENT PURPOSES ONLY AND THE PARCELS SHOWN HEREON MAY NOT COMPLY WITH STATE AND LOCAL SUBDIVISION ORDINANCES, AND NO LIABILITY IS ASSUMED FOR THE USE OF THE INFORMATION SHOWN HEREON.



BASIS OF BEARINGS:
L.S. 10-68



VICINITY OF LINDCOVE
ASSESSOR'S MAPS BK. 115 , PG. 09
COUNTY OF TULARE, CALIFORNIA, U.S.A.

NOTE: Assessor's Parcel Numbers Shown in Circles (1) (123)
Assessor's Block Numbers Shown in Ellipses

2005-0135011	07/03/2008	CBT
REVISION	DATE	TECH