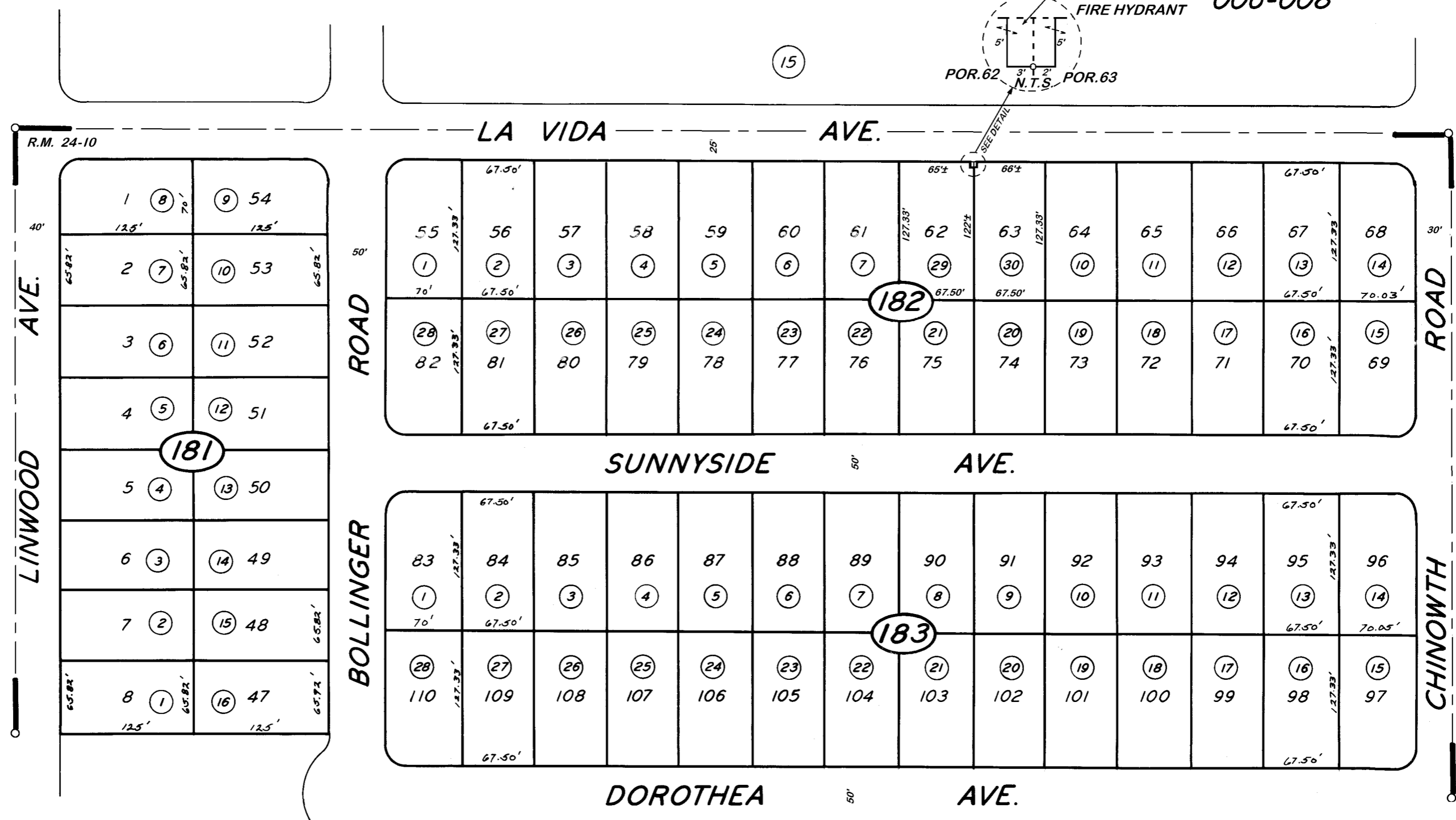


DISCLAIMER
 THIS MAP WAS PREPARED FOR LOCAL PROPERTY ASSESSMENT PURPOSES ONLY. THE PARCELS SHOWN HEREON MAY NOT COMPLY WITH STATE AND LOCAL SUBDIVISION ORDINANCES. NO LIABILITY IS ASSUMED FOR THE USE OF THE INFORMATION HEREON. R & T CODE SEC. 327, 408.3, ETC.
 REVISED: 11/10/2015
 REASON: 2015-0044978
 CAD TECH: ASG

POR. SE 1/4 SEC. 2, T.19S., R.24E., M.D.B.&M.

CITY OF VISALIA
 FIRE HYDRANT

TAX CODE AREA 119-18
 006-008



POR. TRACT NO. 398, R.M. 24-10.

CITY OF VISALIA
 ASSESSOR'S MAPS BK. 119, PG. 18
 COUNTY OF TULARE, CALIF.

NOTE - ASSESSOR'S BLOCK NUMBERS SHOWN IN ELLIPSES
 ASSESSOR'S PARCEL NUMBERS SHOWN IN CIRCLES