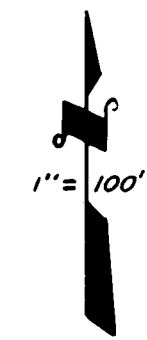
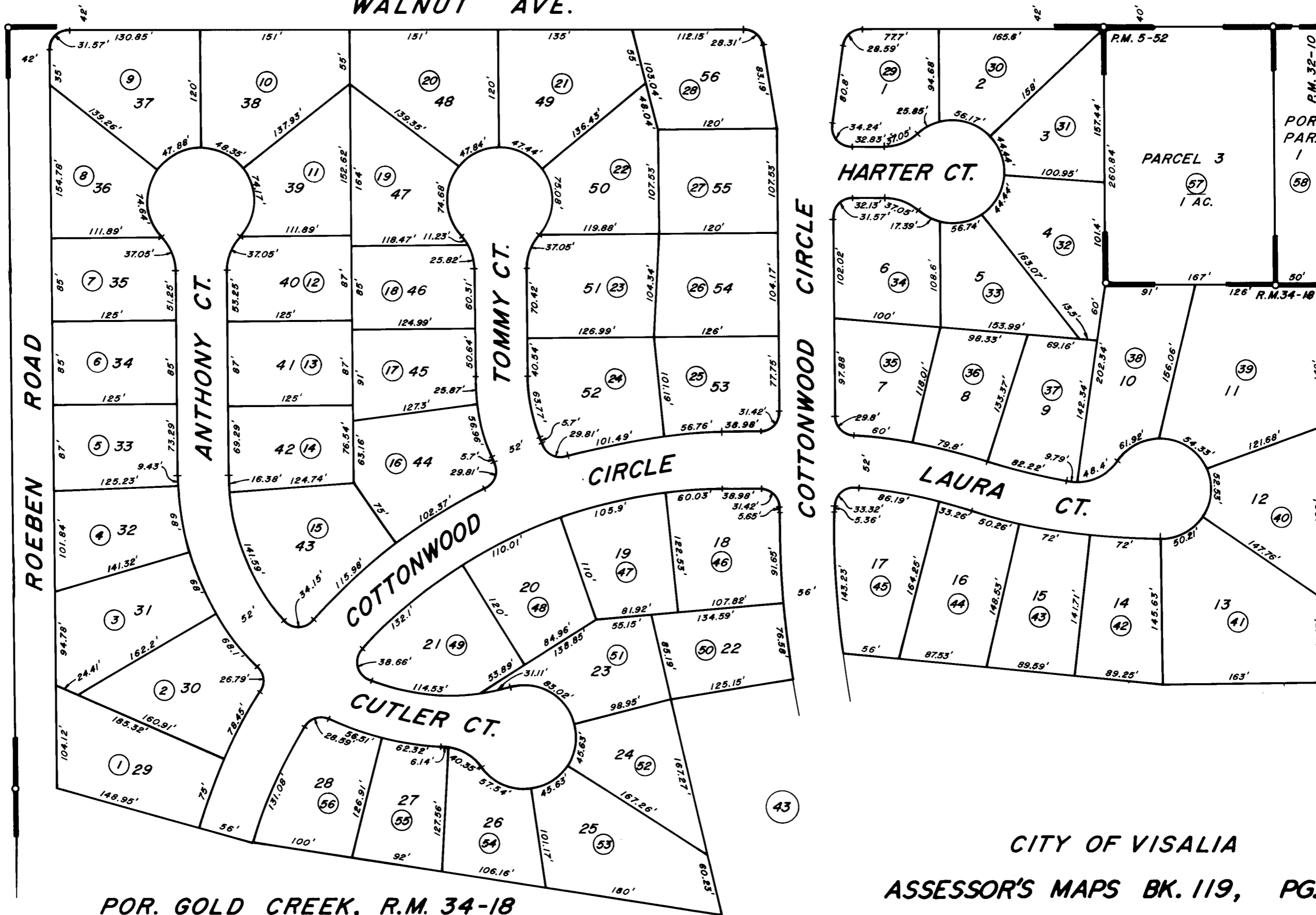


N 1/4 COR.

WALNUT AVE.



POR. GOLD CREEK, R.M. 34-18
 POR. PARCEL MAP 452, P.M. 5-52
 POR. PARCEL MAP 3109, P.M. 32-10

CITY OF VISALIA
 ASSESSOR'S MAPS BK. 119, PG. 41
 COUNTY OF TULARE, CALIF.

NOTE-ASSESSOR'S BLOCK NUMBERS SHOWN IN ELLIPSES
 ASSESSOR'S PARCEL NUMBERS SHOWN IN CIRCLES