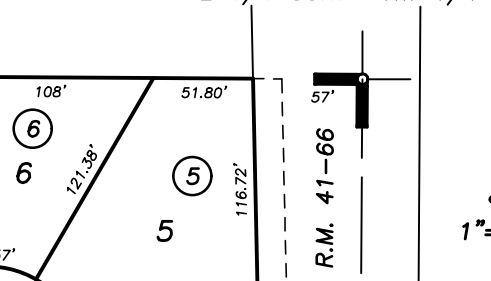
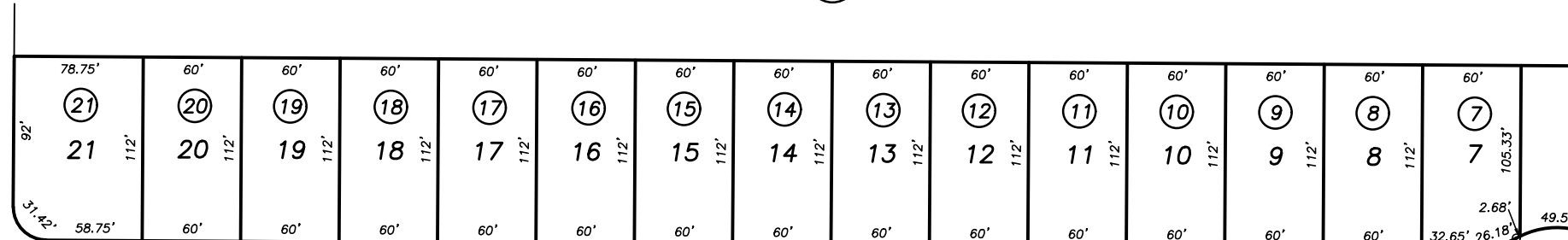
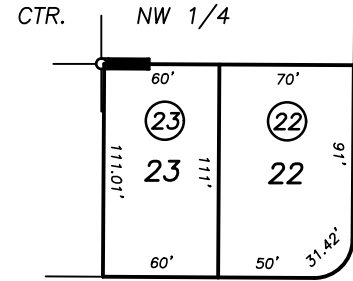


61

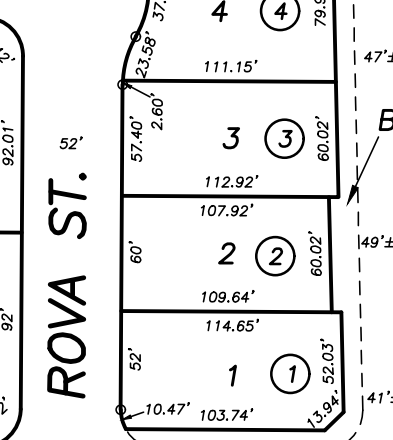
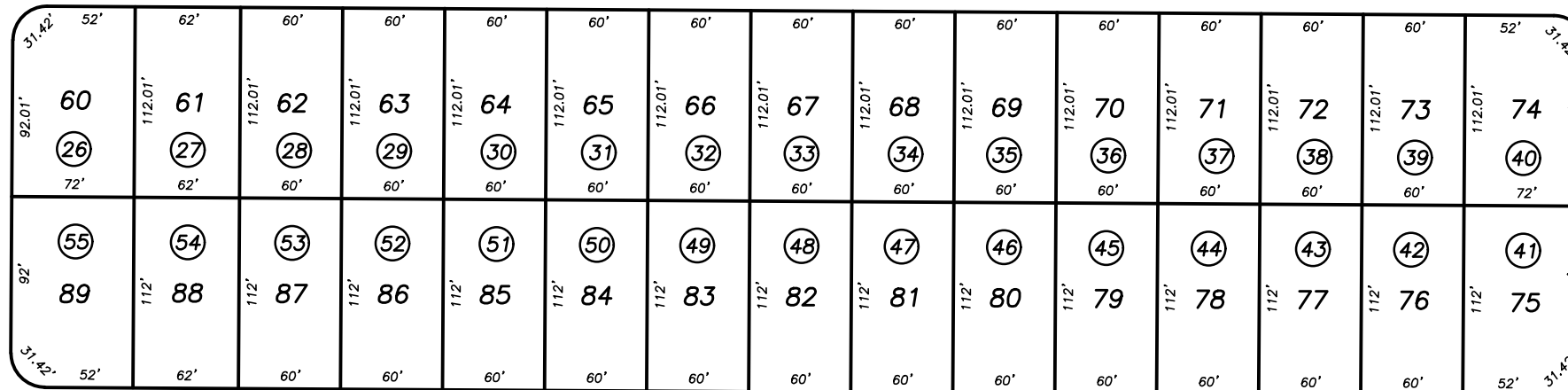
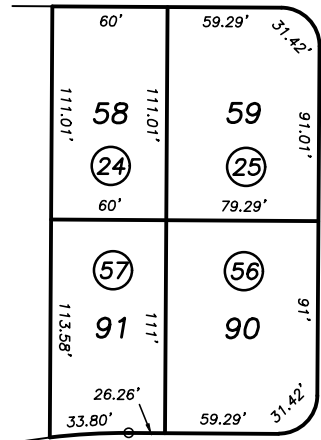
E 1/4 COR. NW 1/4

DISCLAIMER
THIS MAP WAS PREPARED FOR LOCAL PROPERTY ASSESSMENT PURPOSES ONLY AND THE PARCELS SHOWN HEREON MAY NOT COMPLY WITH STATE AND LOCAL SUBDIVISION ORDINANCES, AND NO LIABILITY IS ASSUMED FOR THE USE OF THE INFORMATION SHOWN HEREON.



RIALTO CT.

RIALTO AVE.



CRENSHAW ST.

ROVA ST.

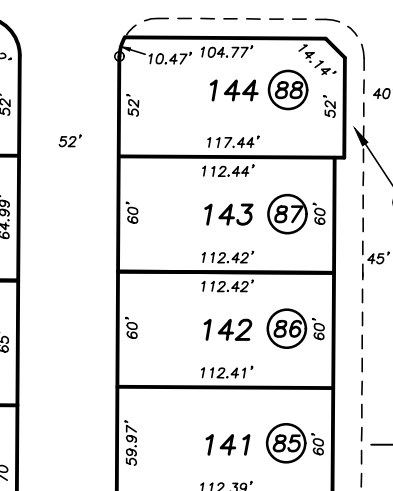
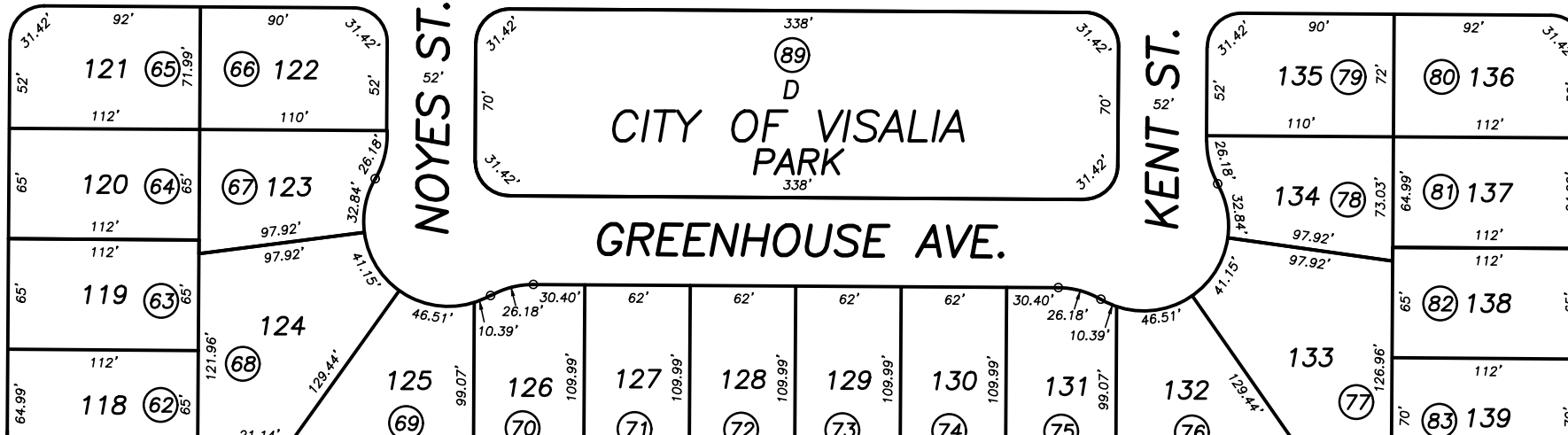
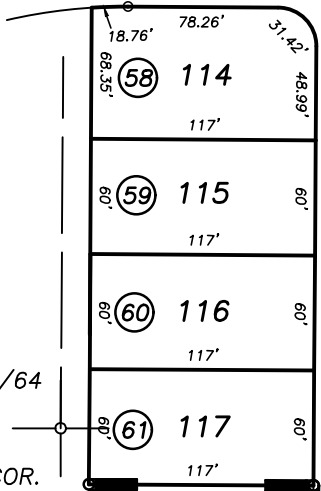
LINWOOD ST.

77

79

NELLIS CT.

NELLIS AVE.



NOYES ST.

KENT ST.

CITY OF VISALIA PARK

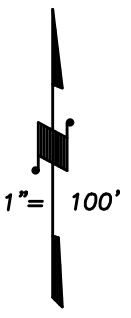
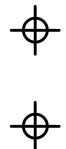
GREENHOUSE AVE.

POR. WEST PARK UNIT NO.2, R.M. 41-66
POR. RECORD OF SURVEY, L.S.27-64 (E 1/2 SEC.11, ETC.)
POR. RECORD OF SURVEY, L.S.20-17 (E 1/2 SEC.11, ETC.)

CITY OF VISALIA
ASSESSOR'S MAPS BK. 119 , PG. 76
COUNTY OF TULARE, CALIFORNIA, U.S.A.

NOTE: Assessor's Parcel Numbers Shown in Circles
Assessor's Block Numbers Shown in Ellipses

ADD PG. NO.	02/15/2007	PHN
REVISION	DATE	TECH



BASIS OF BEARINGS:
R.M. 41-66

