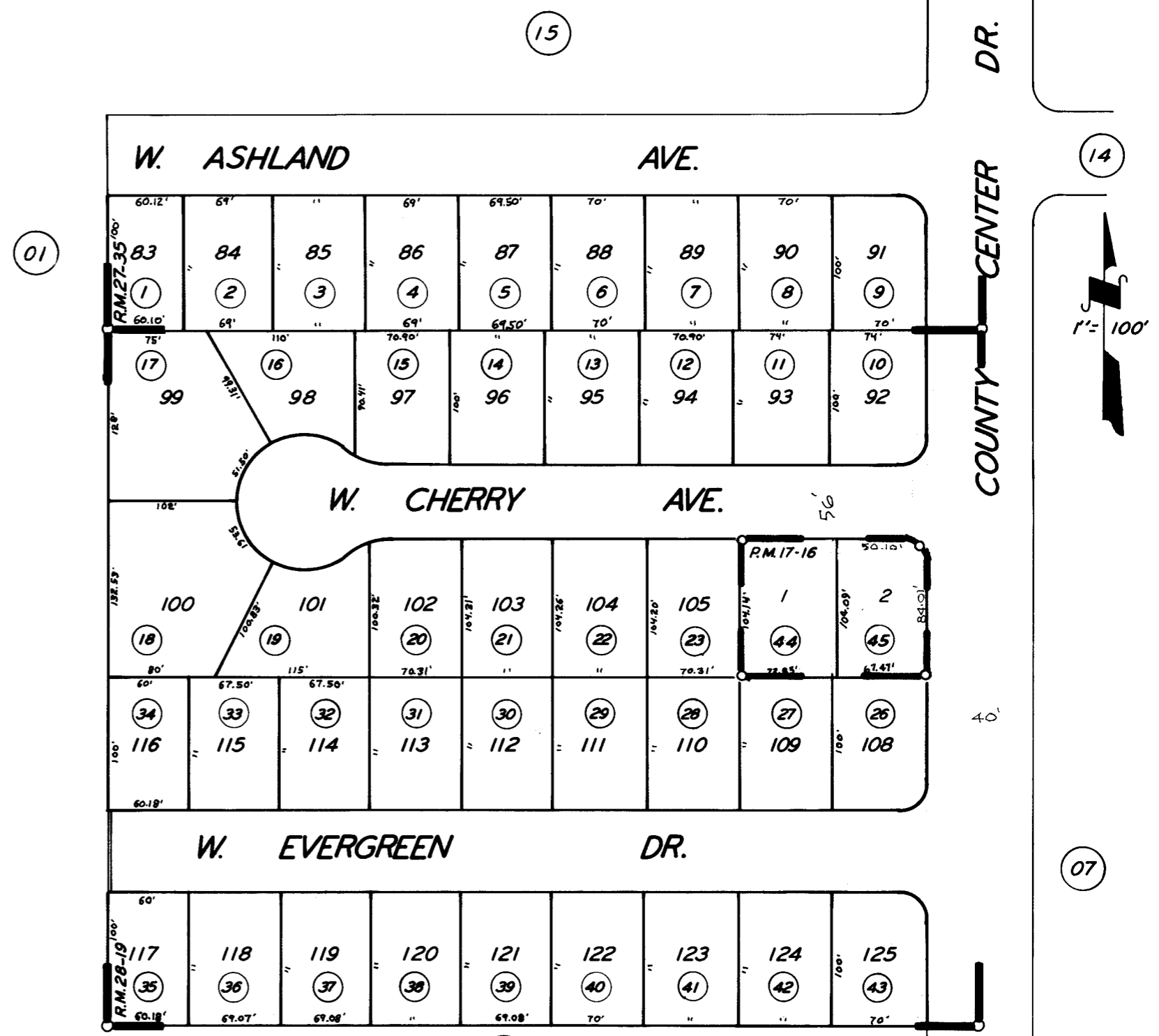


POR. NW 1/4 SEC. 1, T.19S., R.24E., M. D. B. & M.

TAX CODE AREA 121-29  
6-008



POR. COOPMAN ACRES UNIT NO. 3 R.M. 27-35  
COOPMAN ACRES UNIT NO. 4 R.M. 28-19  
PARCEL MAP 1615, P.M. 17-16

CITY OF VISALIA  
ASSESSOR'S MAPS BK. 121 PG. 29  
COUNTY OF TULARE, CALIF.

NOTE—ASSESSOR'S BLOCK NUMBERS SHOWN IN ELIPSES  
ASSESSOR'S PARCEL NUMBERS SHOWN IN CIRCLES