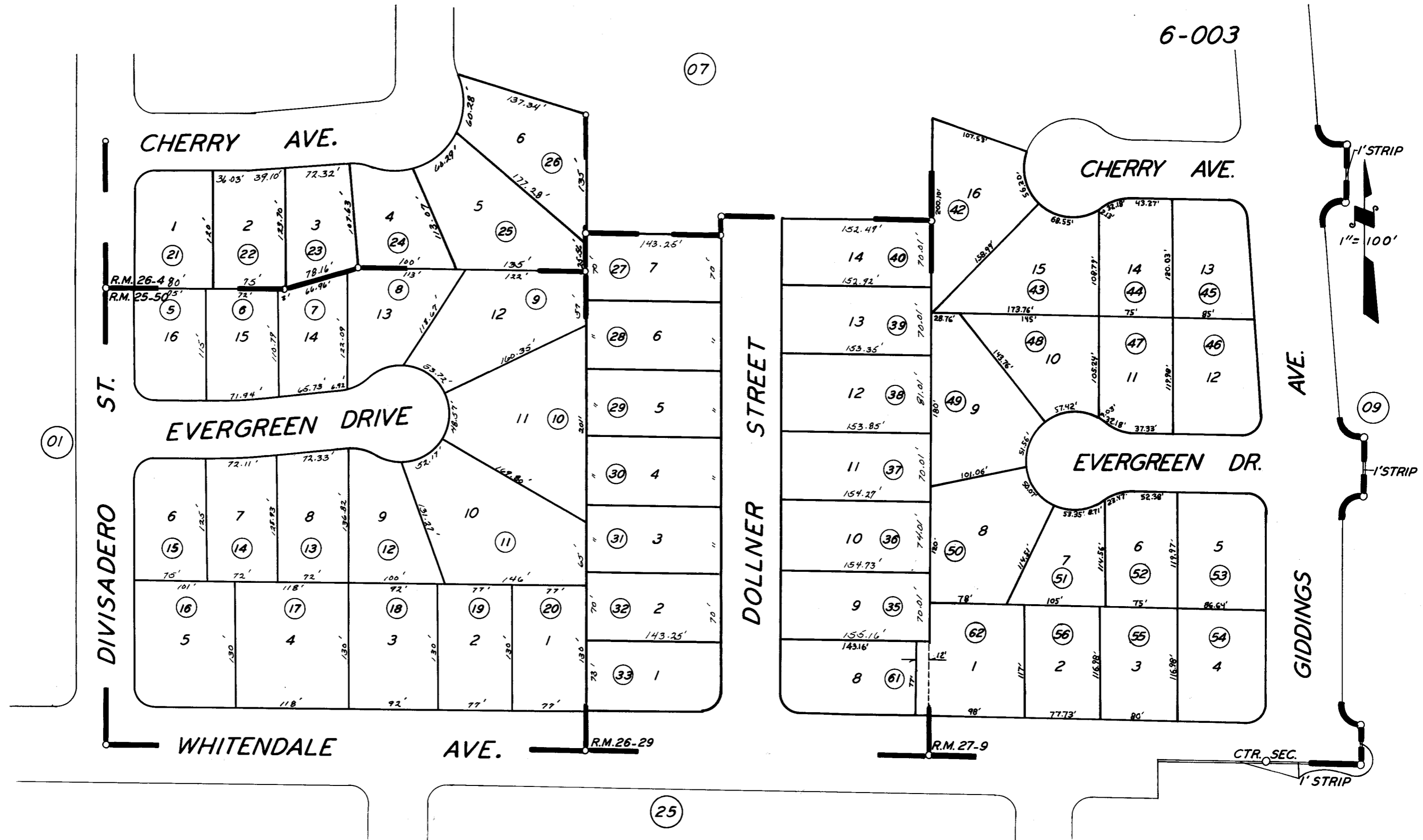


6-003



GLEN-ARBOR ESTATES UNIT NO. 3 R.M. 26-29  
 GLEN-ARBOR ESTATES R.M. 25-50  
 POR. GLEN-ARBOR ESTATES UNIT NO. 2 R.M. 26-4  
 POR. WHITNEY TERRACE UNIT NO. 4 R.M. 27-9

CITY OF VISALIA  
 ASSESSOR'S MAPS BK. 122, PG. 08  
 COUNTY OF TULARE, CALIF.

NOTE - ASSESSOR'S BLOCK NUMBERS SHOWN IN ELLIPSES  
 ASSESSOR'S PARCEL NUMBERS SHOWN IN CIRCLES