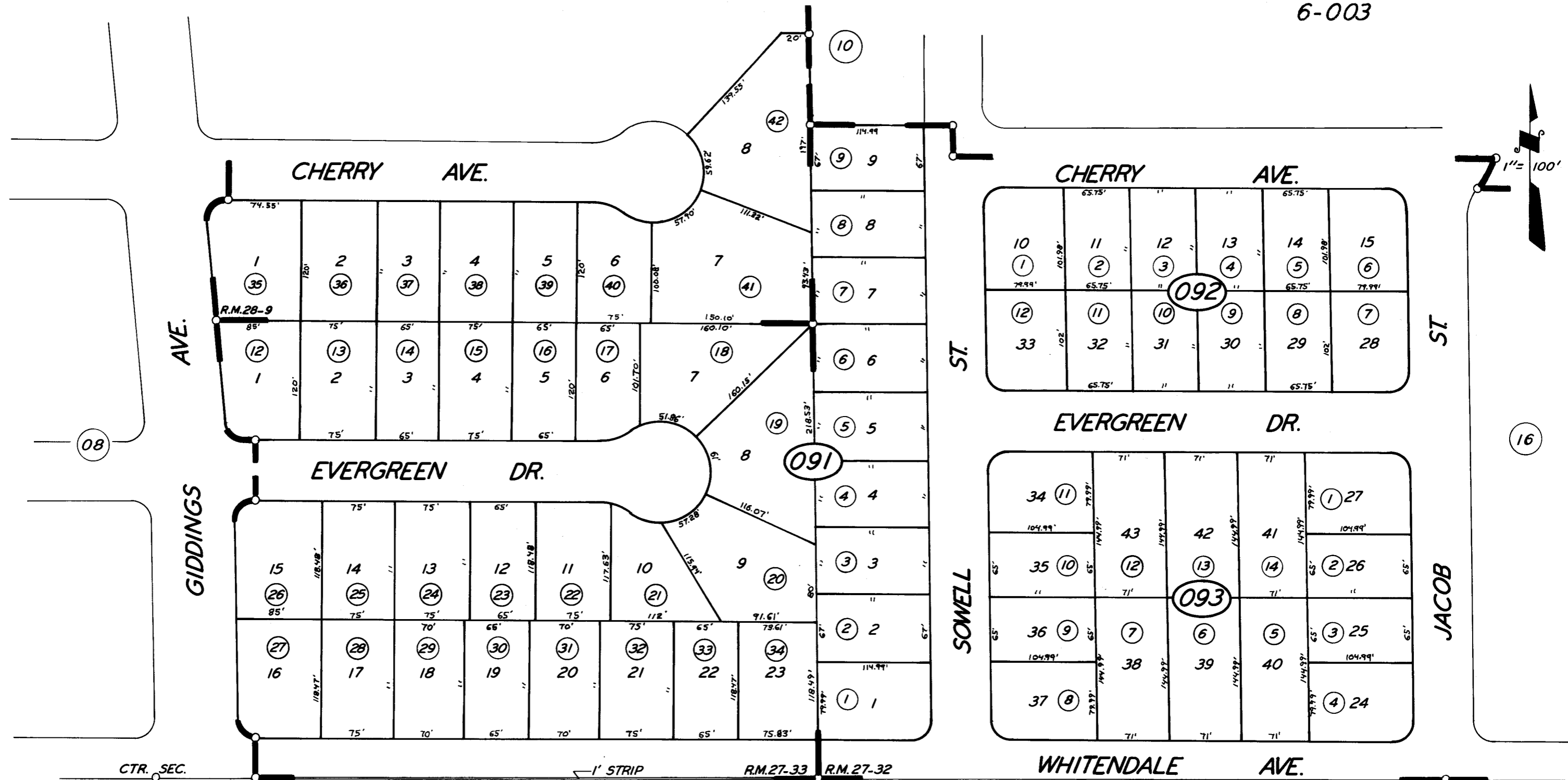


6-003



POR. WHITENDALE VILLAGE NO. 1 R.M. 27-32
 WHITNEY TERRACE UNIT NO. 5 R.M. 27-33
 POR. WHITNEY TERRACE UNIT NO. 6 R.M. 28-9

CITY OF VISALIA
 ASSESSOR'S MAPS BK. 122, PG. 09
 COUNTY OF TULARE, CALIF.

NOTE - ASSESSOR'S BLOCK NUMBERS SHOWN IN ELLIPSES
 ASSESSOR'S PARCEL NUMBERS SHOWN IN CIRCLES