

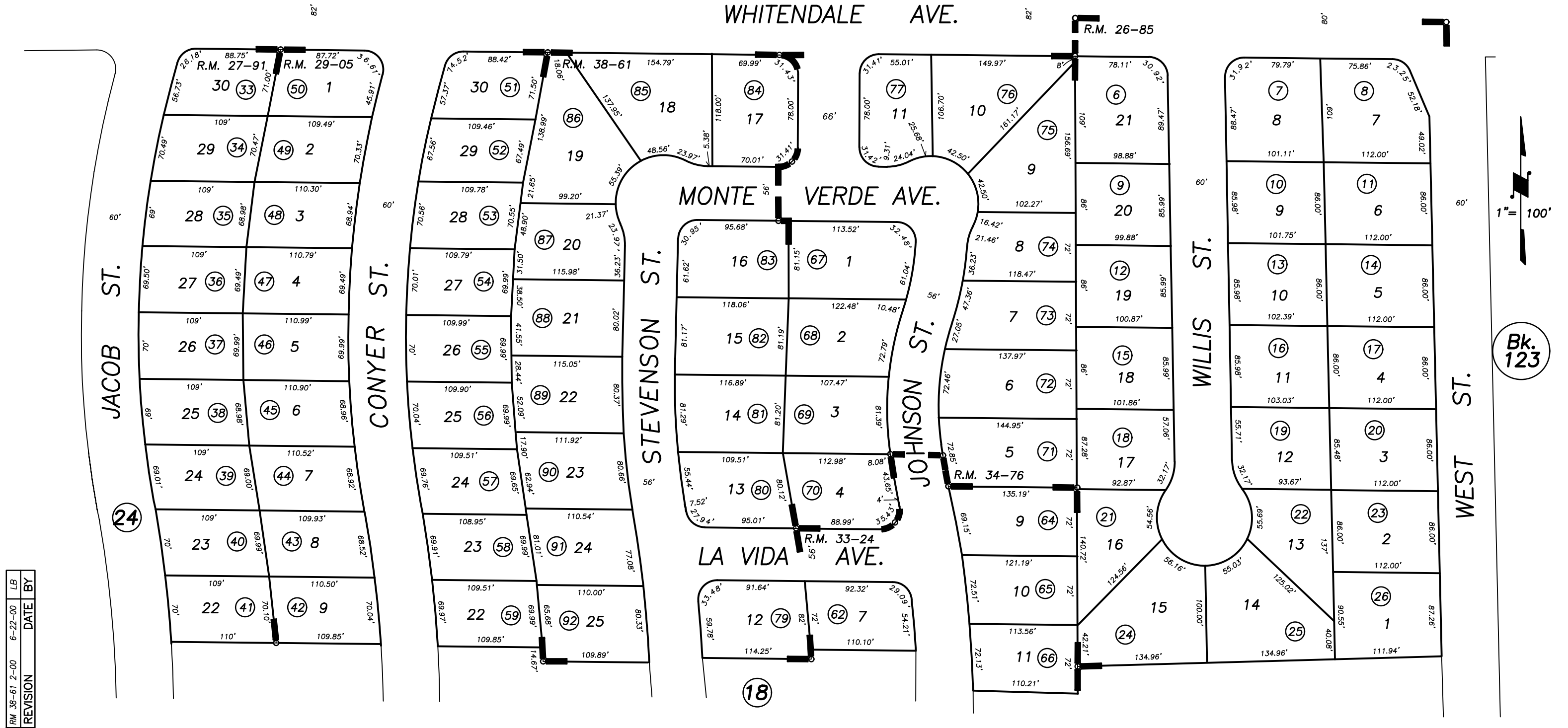
DISCLAIMER

THIS MAP WAS PREPARED FOR LOCAL PROPERTY ASSESSMENT PURPOSES ONLY AND THE PARCELS SHOWN HEREON MAY NOT COMPLY WITH STATE AND LOCAL SUBDIVISION ORDINANCES, AND NO LIABILITY IS ASSUMED FOR THE USE OF THE INFORMATION SHOWN HEREON.

NLY POR. OF NE 1/4 OF SE 1/4 SEC. 6, T. 19 S., R. 25 E., M.D.B.& M.

Tax Area Code 122-17
6-003

16



REVISION	DATE	BY
RM 38-61 2-00	6-22-00	LB

PARK WEST R.M. 26-85
 POR. PARK WEST 4 R.M.27-91
 POR. PARK WEST 5 R.M. 29-05
 POR. PARK WEST 6 R.M. 33-24
 POR. PARK WEST 7 R.M. 34-76
 PARK WEST 7 PHASE 2 R.M. 38-61

CITY OF VISALIA
 ASSESSOR'S MAPS BK. 122, PG. 17.
 COUNTY OF TULARE, CALIF.

NOTE: Assessor's Block Numbers Shown in Ellipses
 Assessor's Parcel Numbers Shown in Circles

01/02