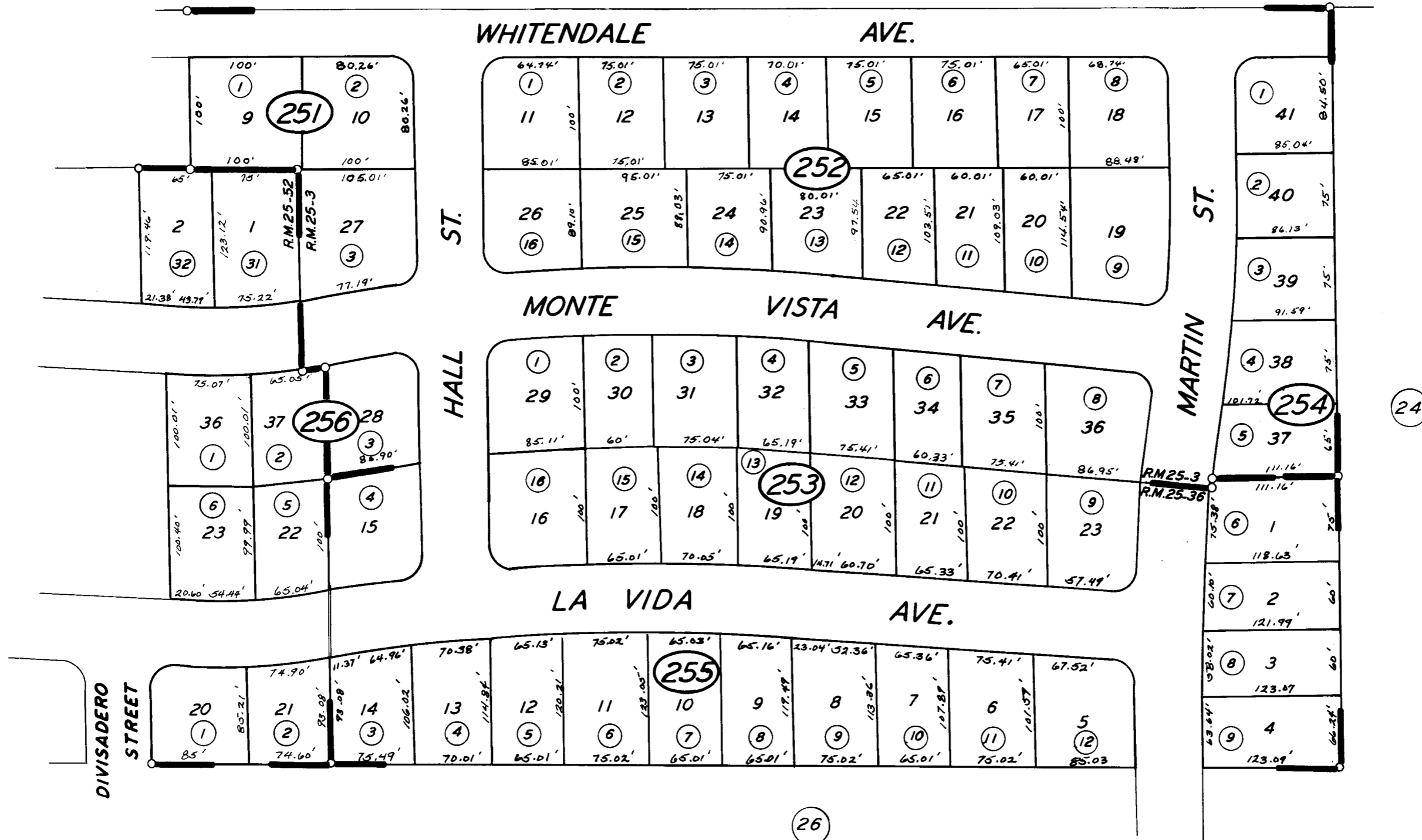


08



POR. WHITNEY TERRACE UNIT NO.1 R.M. 25-3
 WHITNEY TERRACE UNIT NO. 2 R.M. 25-36
 POR. WHITNEY TERRACE UNIT NO.3 R.M. 25-52

CITY OF VISALIA
 ASSESSOR'S MAPS BK. 122, PG. 25
 COUNTY OF TULARE, CALIF.

NOTE - ASSESSOR'S BLOCK NUMBERS SHOWN IN ELLIPSES
 ASSESSOR'S PARCEL NUMBERS SHOWN IN CIRCLES

