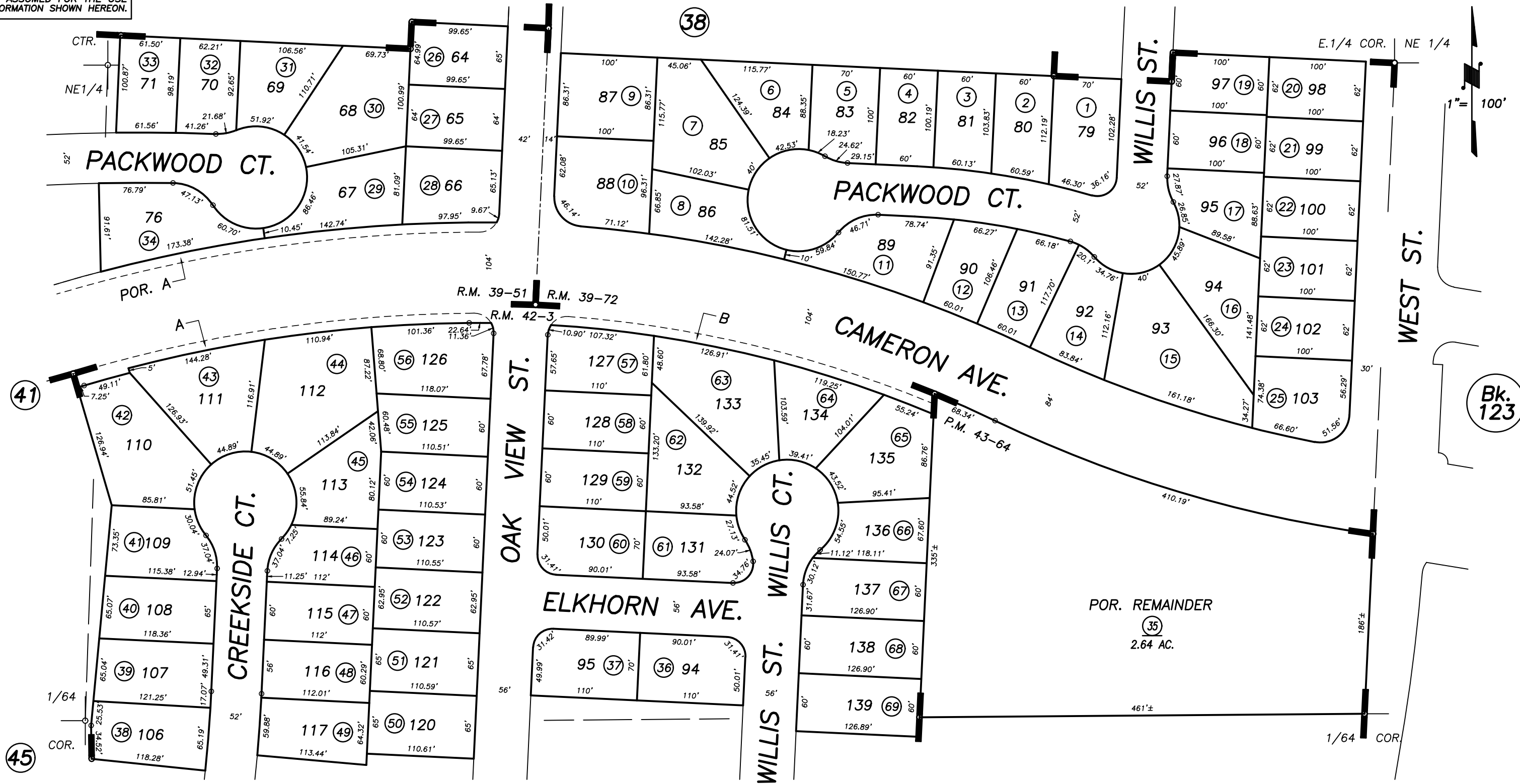


DISCLAIMER
 THIS MAP WAS PREPARED FOR LOCAL PROPERTY ASSESSMENT PURPOSES ONLY AND THE PARCELS SHOWN HEREON MAY NOT COMPLY WITH STATE AND LOCAL SUBDIVISION ORDINANCES, AND NO LIABILITY IS ASSUMED FOR THE USE OF THE INFORMATION SHOWN HEREON.

N1/2 OF SE1/4 OF NE1/4 SEC.7, T.19S., R.25E., M.D.B.&M.

Tax Area Codes **122-43**
 006-207



POR. PARCEL MAP NO. 4260, P.M. 43-64
 POR. CAMERON CREEK RANCH, UNIT NO. 2, R.M. 39-51
 POR. CALDWELL WEST ESTATES, UNIT NO. 2, R.M. 39-72
 POR. SOUTH CAMERON CREEK, UNIT NO. 2, R.M. 42-3

CITY OF VISALIA
 ASSESSOR'S MAPS BK. 122 , PG. 43
 COUNTY OF TULARE, CALIFORNIA, U.S.A.

NOTE: Assessor's Parcel Numbers Shown in Circles (1) (123)
 Assessor's Block Numbers Shown in Ellipses

BK 126 REMAP	01/06/2023	JDF
REVISION	DATE	TECH