

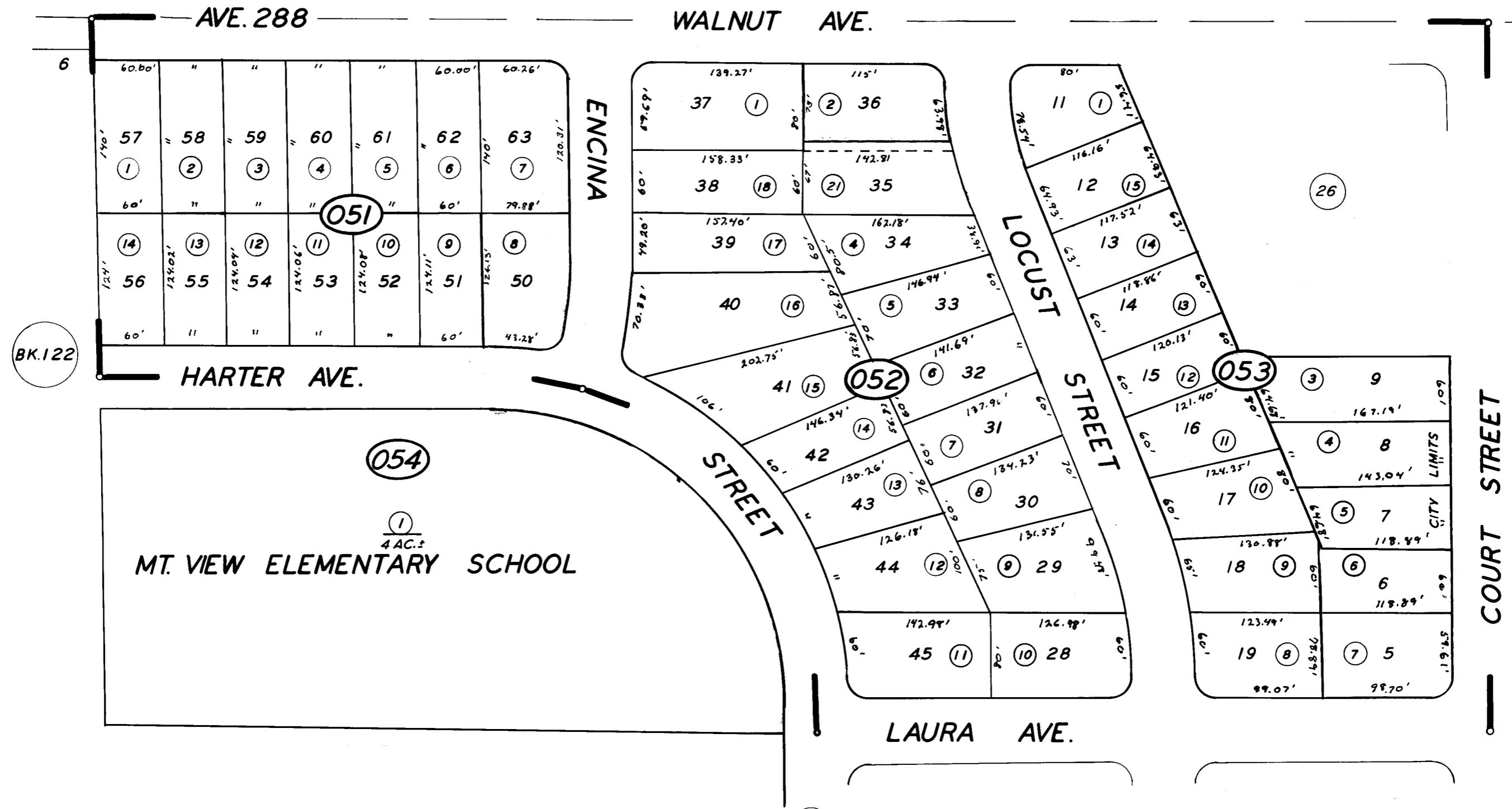
N/2 OF NW/4 OF NW/4 SEC.5. T.19S., R.25E., M. D. B. & M.

TAX CODE AREA 123-05

6-139
6-003
6-047

BK. 97

31 32



BK. 122

POR. TR. 279 RM. 22-33
COURT STREET OFFICE CONDOMINIUMS C.P. 1-3

CITY OF VISALIA
ASSESSOR'S MAPS BK. 123, PG. 05.
COUNTY OF TULARE, CALIF.

NOTE - ASSESSOR'S BLOCK NUMBERS SHOWN IN ELLIPSES
ASSESSOR'S PARCEL NUMBERS SHOWN IN CIRCLES

