

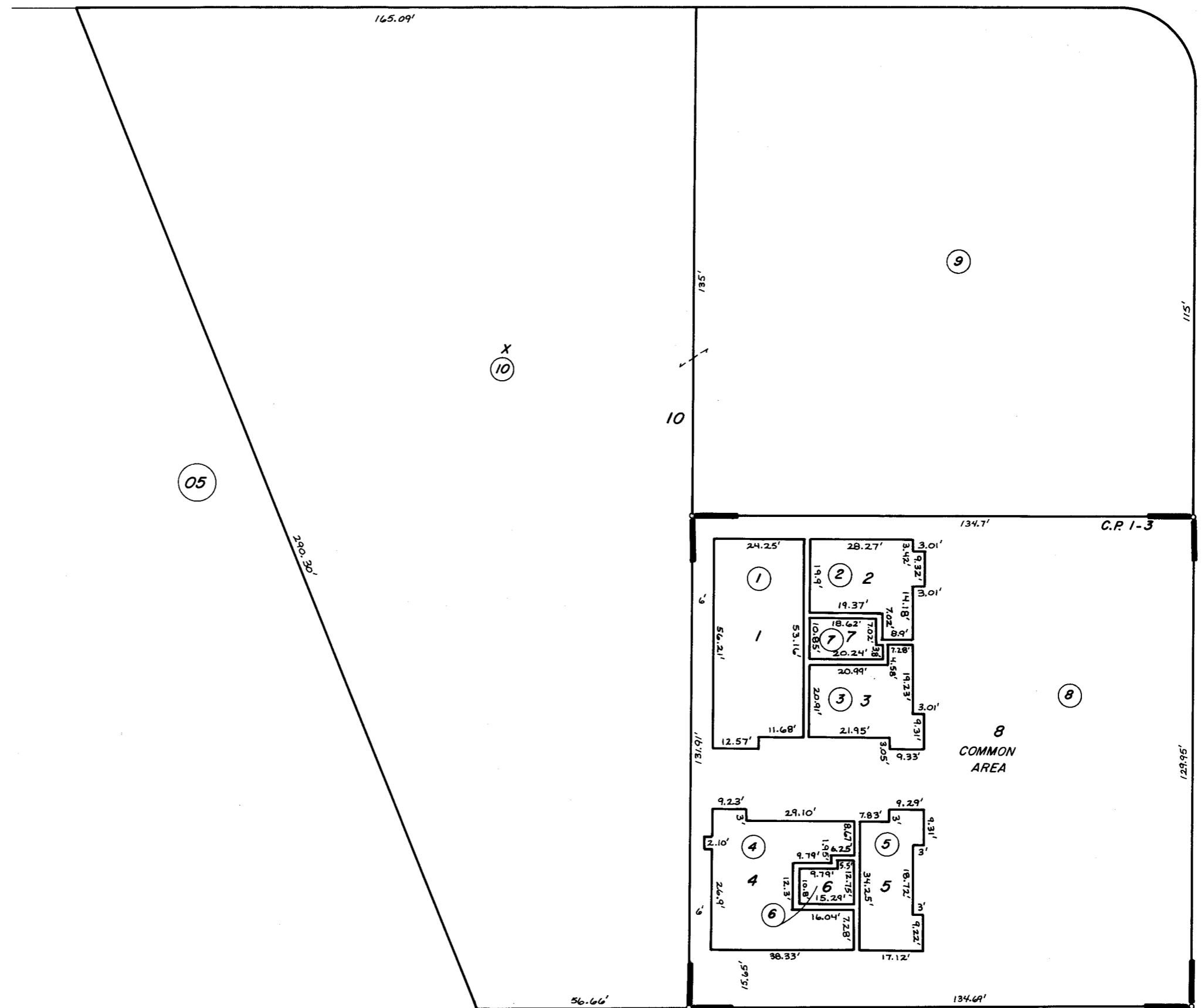
BK. 97

POR. NE 1/4 OF NW 1/4 OF NW 1/4 SEC. 5, T.19S., R.25E., M.D.B. & M.

TAX CODE AREA  
6-003

123-26

WALNUT AVE.



COURT STREET OFFICE CONDOMINIUMS C.P. 1-3  
POR. TR. 279 R.M. 22-33

ASSESSOR'S MAPS BK. 123 PG. 26  
CITY OF VISALIA  
COUNTY OF TULARE, CALIF.

NOTE-ASSESSOR'S BLOCK NUMBERS SHOWN IN ELLIPSES  
ASSESSOR'S PARCEL NUMBERS SHOWN IN CIRCLES