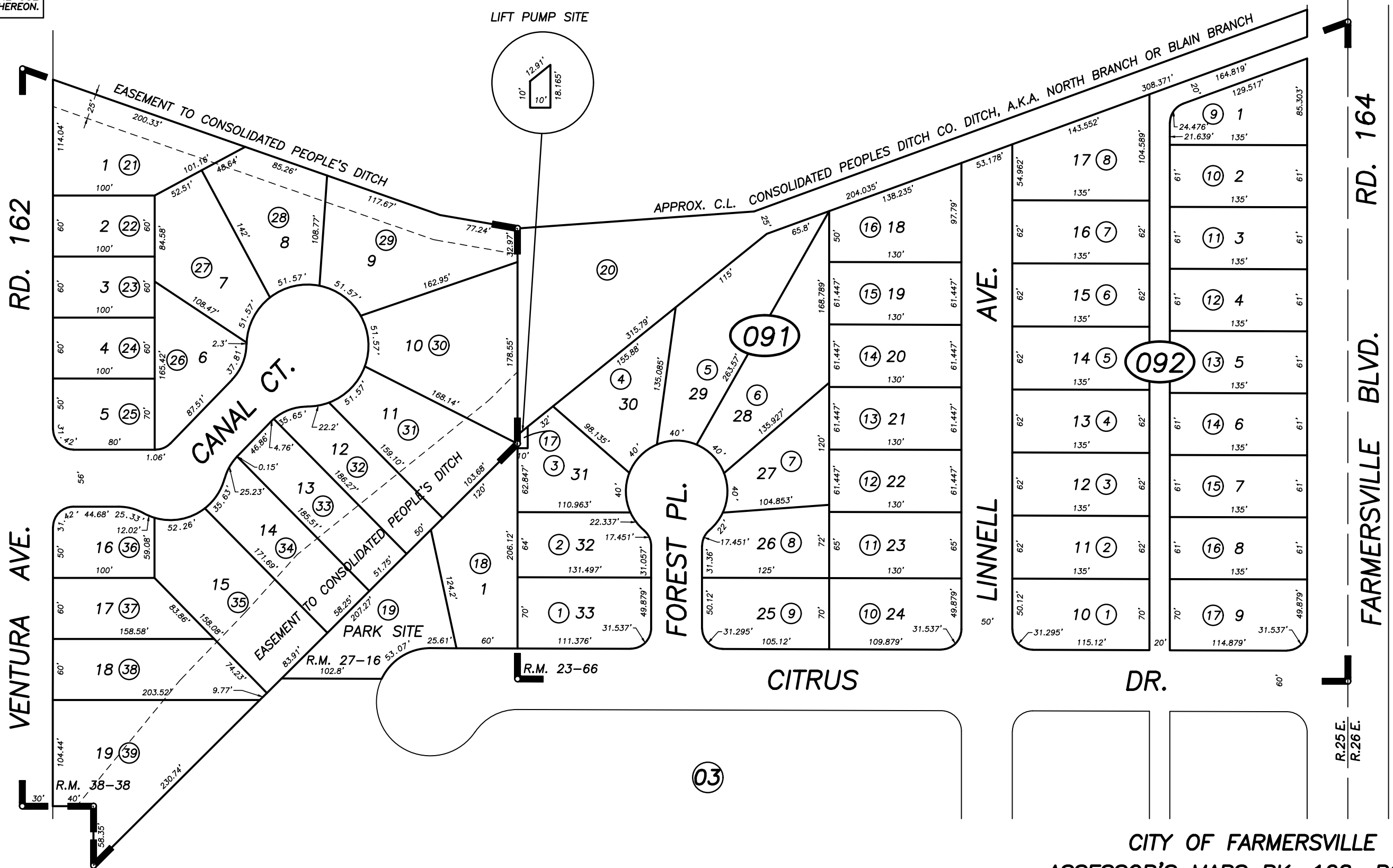
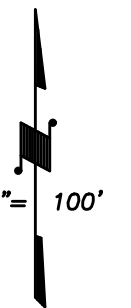


8-001 8-005  
8-012 8-013

**DISCLAIMER**  
THIS MAP WAS PREPARED FOR LOCAL PROPERTY ASSESSMENT PURPOSES ONLY AND THE PARCELS SHOWN HEREON MAY NOT COMPLY WITH STATE AND LOCAL SUBDIVISION ORDINANCES, AND NO LIABILITY IS ASSUMED FOR THE USE OF THE INFORMATION SHOWN HEREON.

19

LIFT PUMP SITE



03

Bk. 129

R.M. 38-38	9/30/99	KPT
REVISION	DATE	BY

03

CITRUS GARDENS UNIT NO. 1, R.M. 23-66  
POR. CITRUS GARDENS WEST, R.M. 27-16  
CANAL GARDENS, R.M. 38-38

CITY OF FARMERSVILLE  
ASSESSOR'S MAPS BK. 128, PG. 09.  
COUNTY OF TULARE, CALIF.

NOTE: Assessor's Block Numbers Shown in Ellipses  
Assessor's Parcel Numbers Shown in Circles

00/01