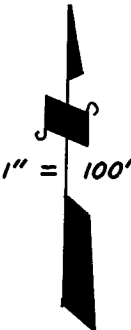
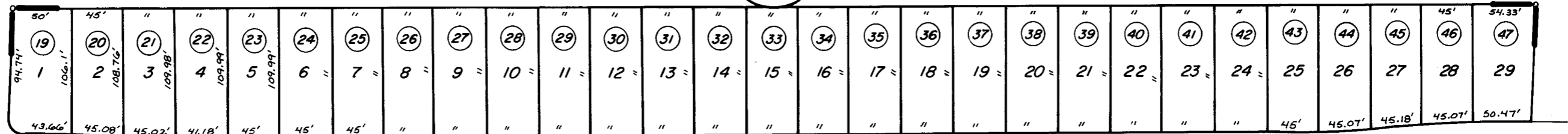


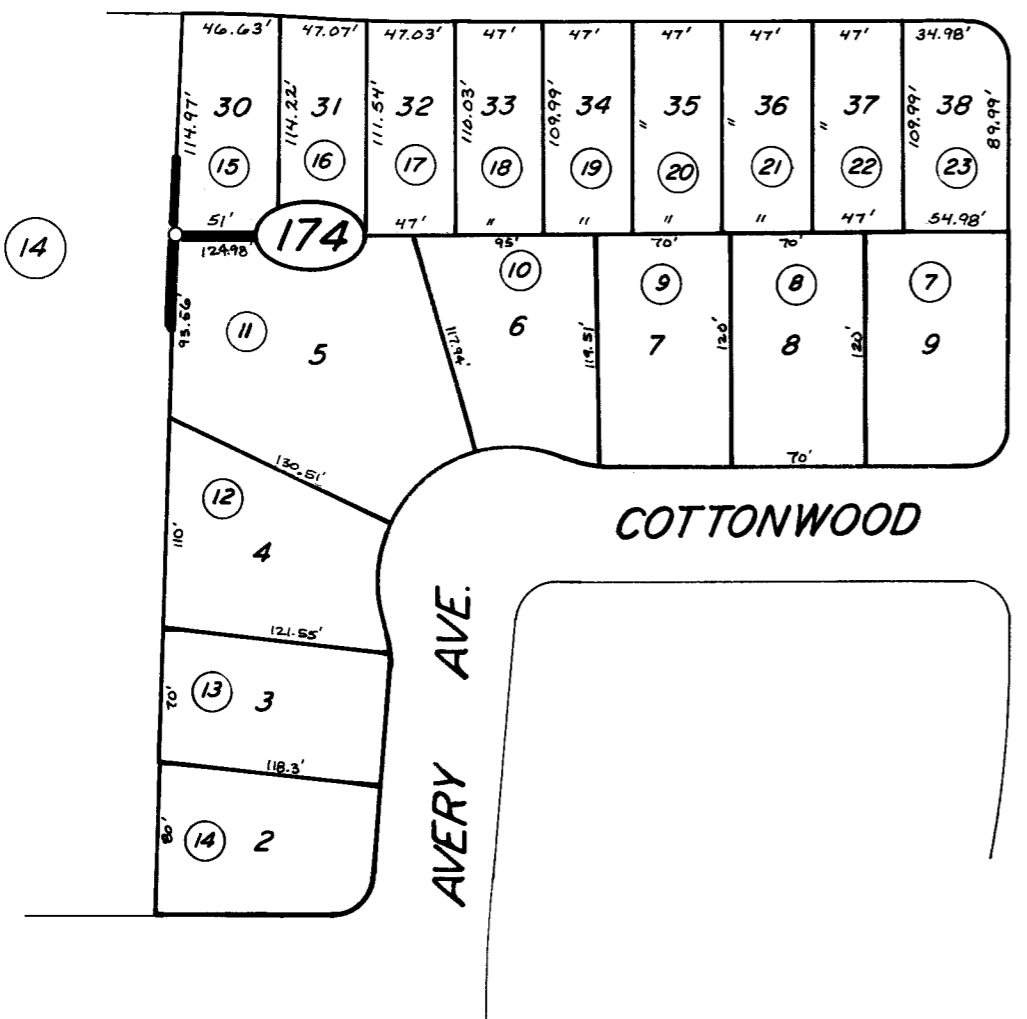
01

173

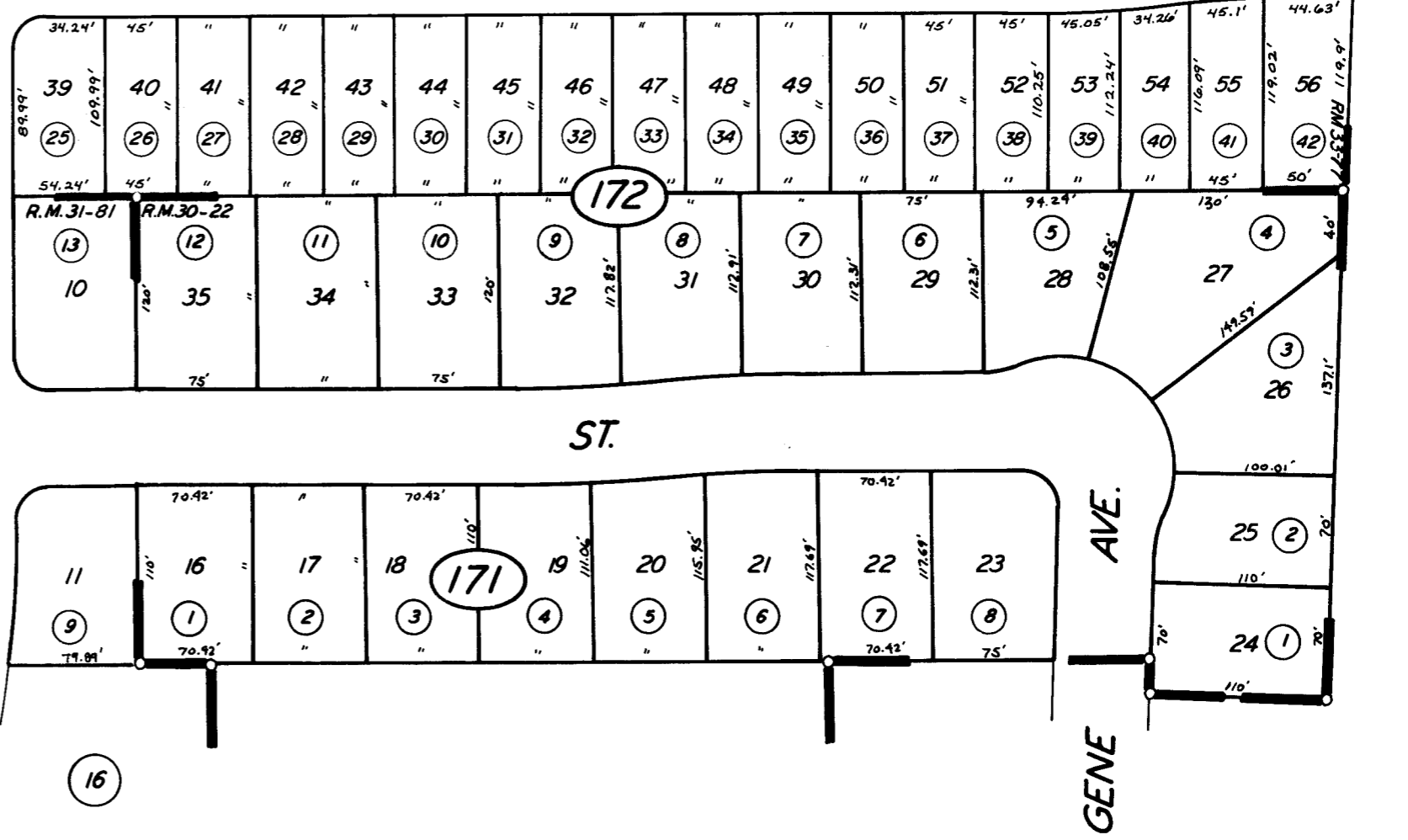


FRONT

ST



AVE.



03

COTTONWOOD

ST.

AVERY AVE.

SANDY

GENE AVE.

MELODY PARK R.M. 33-77
POR. MILLER ESTATES UNIT NO. 2 R.M. 30-22

POR. AMEND. MILLER ESTATES UNIT NO. 4 R.M. 31-81

CITY OF FARMERSVILLE
ASSESSOR'S MAPS BK. 129, PG. 17
COUNTY OF TULARE, CALIF.

NOTE - ASSESSOR'S BLOCK NUMBERS SHOWN IN ELLIPSES
ASSESSOR'S PARCEL NUMBERS SHOWN IN CIRCLES