

N1/2 OF NW1/4 OF NE1/4 SEC.12, T.19S., R.25E., M.D.B.&M.

Tax Area Codes **130-18**

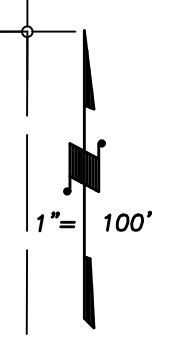
DISCLAIMER
THIS MAP WAS PREPARED FOR LOCAL PROPERTY ASSESSMENT PURPOSES ONLY AND THE PARCELS SHOWN HEREON MAY NOT COMPLY WITH STATE AND LOCAL SUBDIVISION ORDINANCES, AND NO LIABILITY IS ASSUMED FOR THE USE OF THE INFORMATION SHOWN HEREON.

Bk. 128

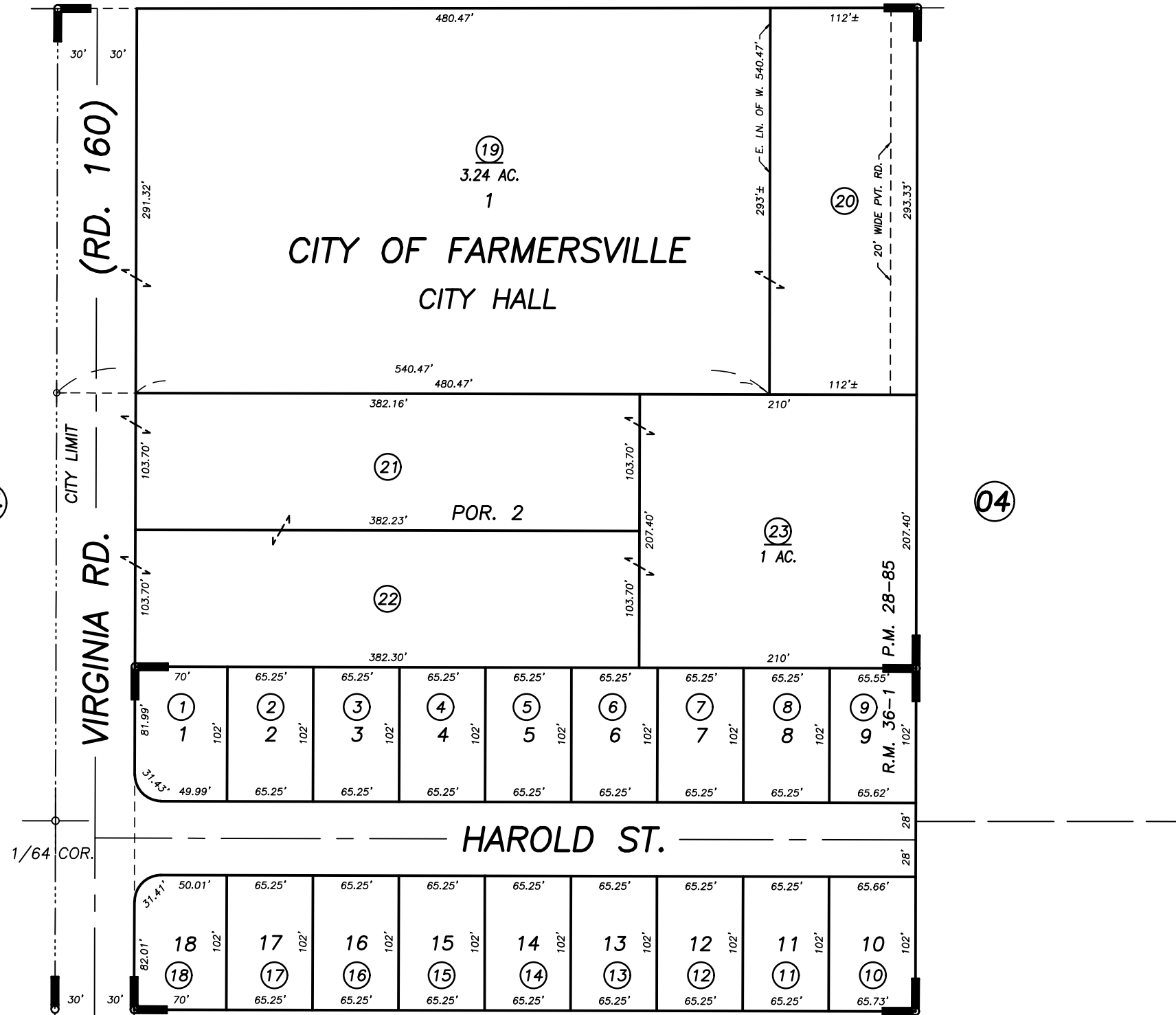
N1/4 COR. **VISALIA RD. (AVE. 280)**

008-000
008-007
008-008

N1/4 COR. NE1/4



BASIS OF BEARINGS:
R.M. 36-1



POR. PARCEL MAP NO. 2784, P.M. 28-85
WOODCREST ESTATES PHASE ONE, R.M. 36-1

19

CITY OF FARMERSVILLE
ASSESSOR'S MAPS BK. 130 , PG. 18
COUNTY OF TULARE, CALIFORNIA, U.S.A.

NOTE: Assessor's Parcel Numbers Shown in Circles **1** **123**
Assessor's Block Numbers Shown in Elipses

CAD CONVERSION	10/17/2013	RLW
REVISION	DATE	TECH