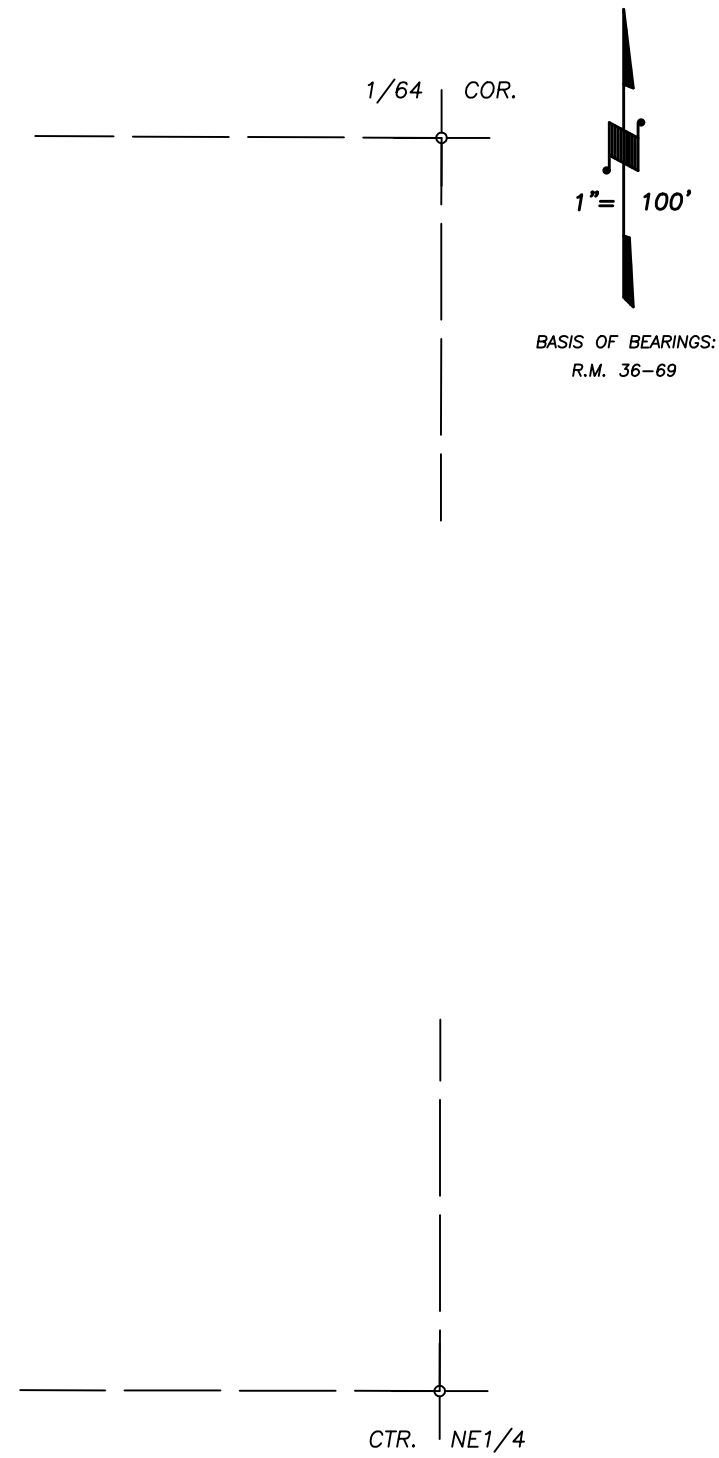
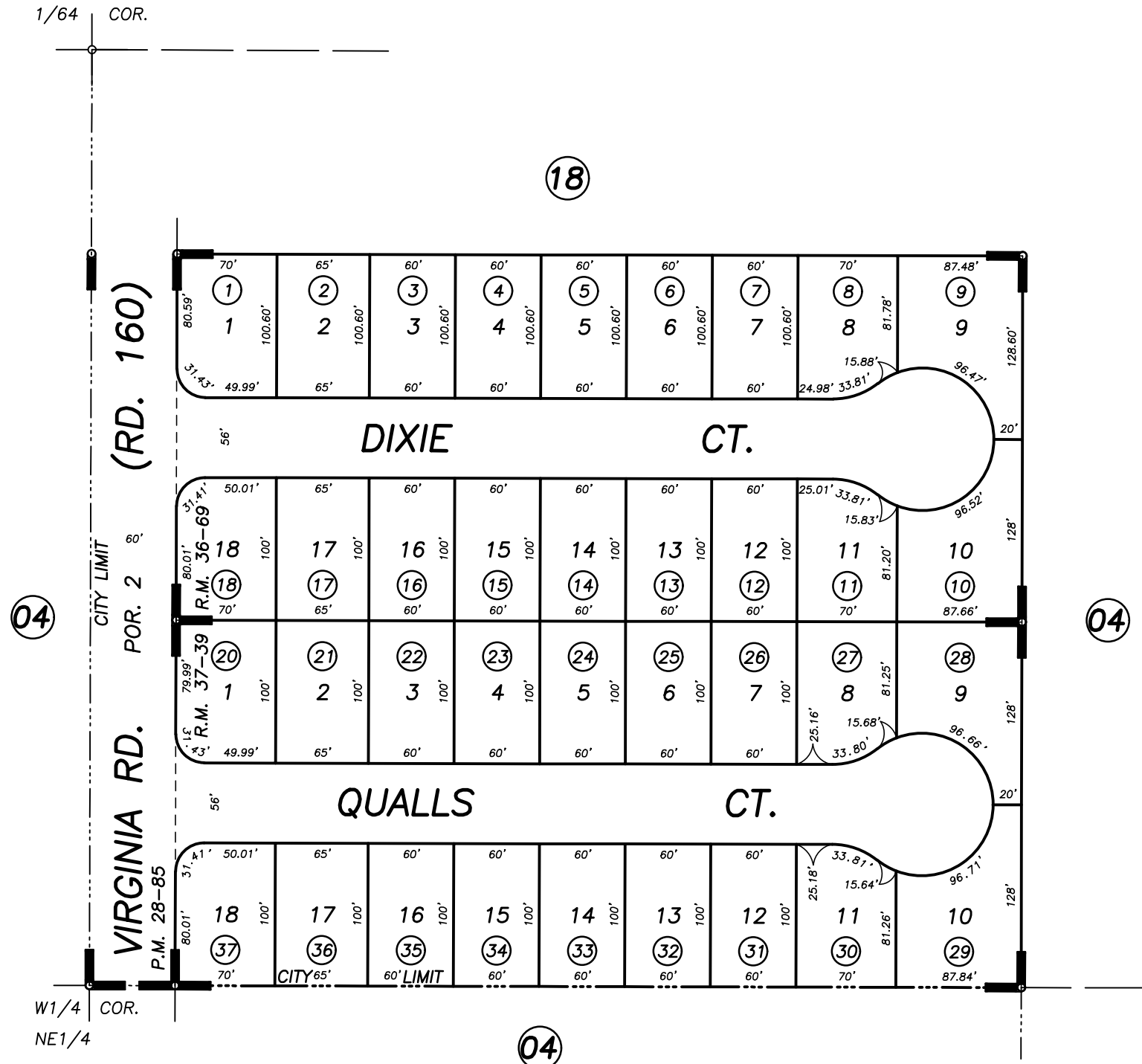


DISCLAIMER
 THIS MAP WAS PREPARED FOR LOCAL PROPERTY ASSESSMENT PURPOSES ONLY AND THE PARCELS SHOWN HEREON MAY NOT COMPLY WITH STATE AND LOCAL SUBDIVISION ORDINANCES, AND NO LIABILITY IS ASSUMED FOR THE USE OF THE INFORMATION SHOWN HEREON.

S1/2 OF NW1/4 OF NE1/4 SEC.12, T.19S., R.25E., M.D.B.&M.

Tax Area Code 130-19
 008-000



POR. PARCEL MAP NO. 2784, P.M. 28-85
 WOODCREST ESTATES PHASE 2, R.M. 36-69
 WOODCREST ESTATES PHASE 3, R.M. 37-39

CITY OF FARMERSVILLE
 ASSESSOR'S MAPS BK. 130 , PG. 19
 COUNTY OF TULARE, CALIFORNIA, U.S.A.