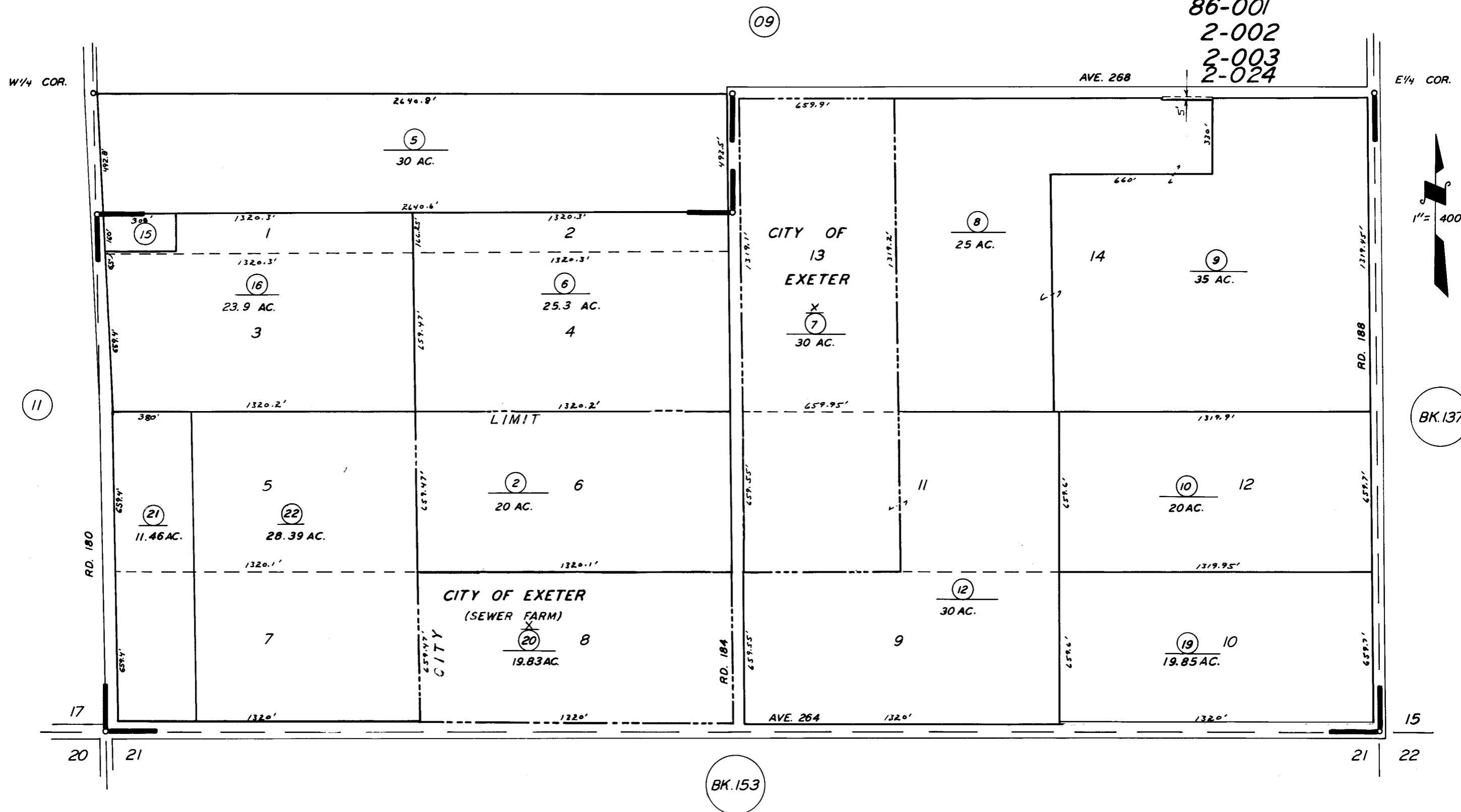


S 1/2 SEC. 16, T.19S., R.26E., M.D.B. & M.

TAX CODE AREA
 121-002
 121-001
 86-001
 2-002
 2-003
 2-024

133-10



POR. LAS PALMAS SUB. R.M. 8-49

ASSESSOR'S MAPS BK. 133, PG. 10

COUNTY OF TULARE, CALIF.

NOTE - ASSESSOR'S BLOCK NUMBERS SHOWN IN ELLIPSES
 ASSESSOR'S PARCEL NUMBERS SHOWN IN CIRCLES

