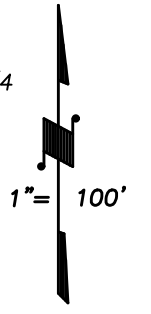


DISCLAIMER
THIS MAP WAS PREPARED FOR LOCAL PROPERTY ASSESSMENT PURPOSES ONLY AND THE PARCELS SHOWN HEREON MAY NOT COMPLY WITH STATE AND LOCAL SUBDIVISION ORDINANCES, AND NO LIABILITY IS ASSUMED FOR THE USE OF THE INFORMATION SHOWN HEREON.

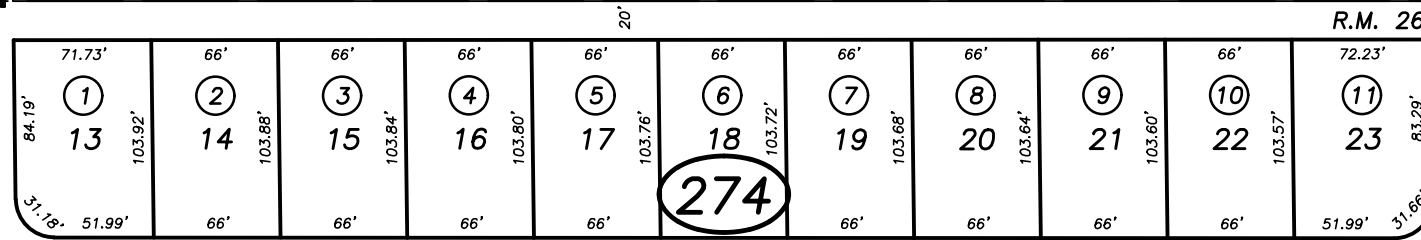
29



BASIS OF BEARINGS:
R.M. 25-98

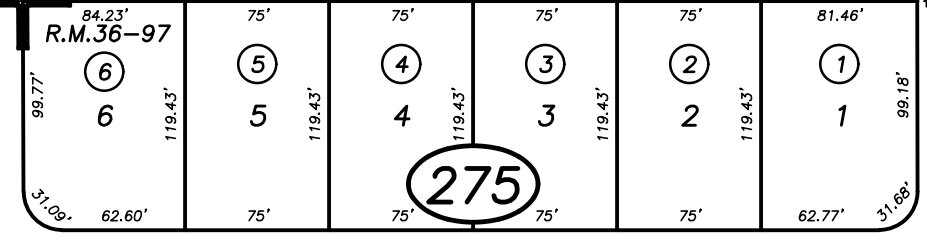
CTR. SW1/4

JOYNER AVE.



R.M. 26-77

QUINCE AVE.

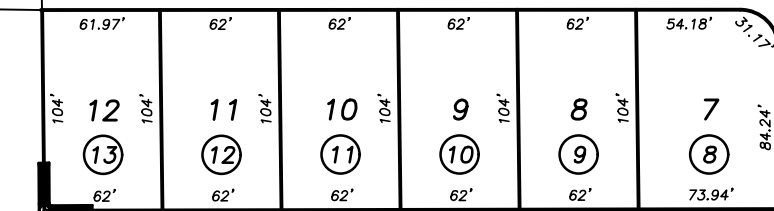


R.M. 36-97

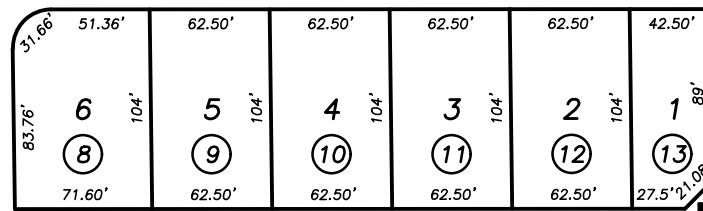
E1/4 COR. SW1/4

DAVIS AVE.

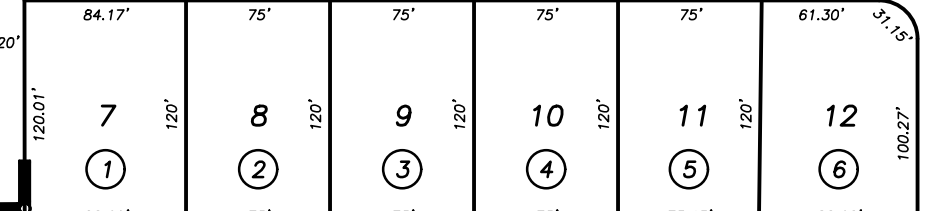
DAVIS AVE.



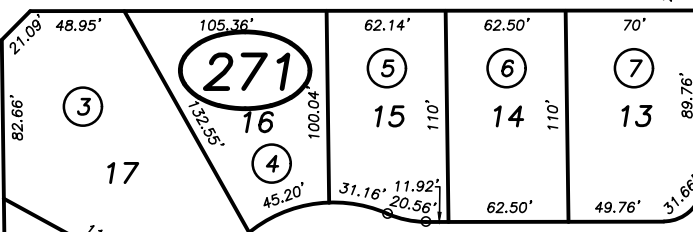
ORANGE AVE.



R.M. 25-98



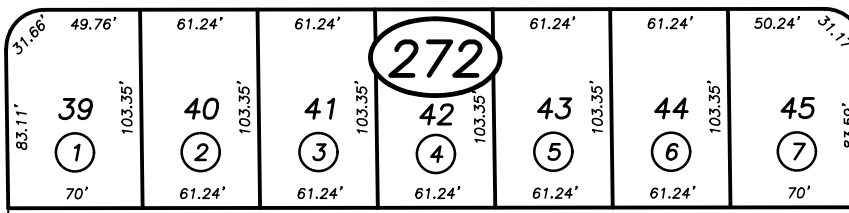
COSART CT.



MILLER AVE.

NELSON AVE.

NELSON AVE.



GLENN AVE.

26

34

1/64 COR.

1/64 COR.

POR. VALENCIA VILLAGE UNIT 2, R.M. 25-98
VALENCIA VILLAGE UNIT 3, R.M. 26-77
POR. COSART HEIGHTS 4 UNIT 1, R.M. 36-97

CITY OF EXETER
ASSESSOR'S MAPS BK. 135 , PG.27
COUNTY OF TULARE, CALIFORNIA, U.S.A.

NOTE: Assessor's Parcel Numbers Shown in Circles
Assessor's Block Numbers Shown in Ellipses

ADJ. PG. UPDATE	04/08/2014	JRS
REVISION	DATE	TECH