

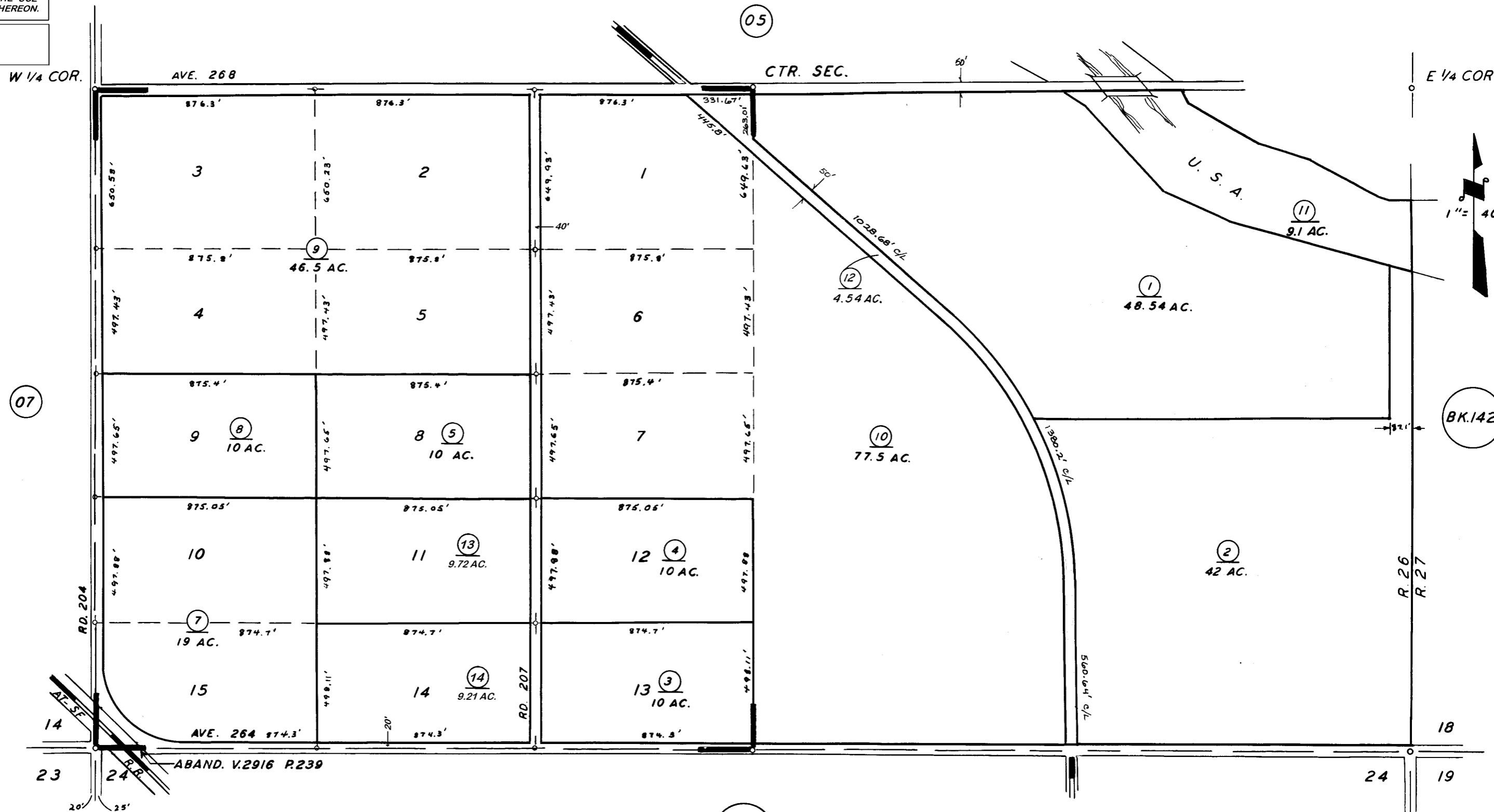
DISCLAIMER

THIS MAP WAS PREPARED FOR LOCAL PROPERTY ASSESSMENT PURPOSES ONLY. THE PARCELS SHOWN HEREON MAY NOT COMPLY WITH STATE AND LOCAL SUBDIVISION ORDINANCES. NO LIABILITY IS ASSUMED FOR THE USE OF THE INFORMATION HEREON.

REVISED: 12/11/2006
REASON: 2004-0109735
CAD TECH: ASG

S 1/2 OF SEC. 13, T. 19S., R. 26E., M. D. B. & M.

TAX CODE AREA 137-06
86-002



THE POLLARD TR. R.M. 8-71

VICINITY OF EXETER
ASSESSOR'S MAPS BK. 137 PG. 06
COUNTY OF TULARE, CALIF.

NOTE — ASSESSOR'S BLOCK NUMBERS SHOWN IN ELLIPSES
ASSESSOR'S PARCEL NUMBERS SHOWN IN CIRCLES