

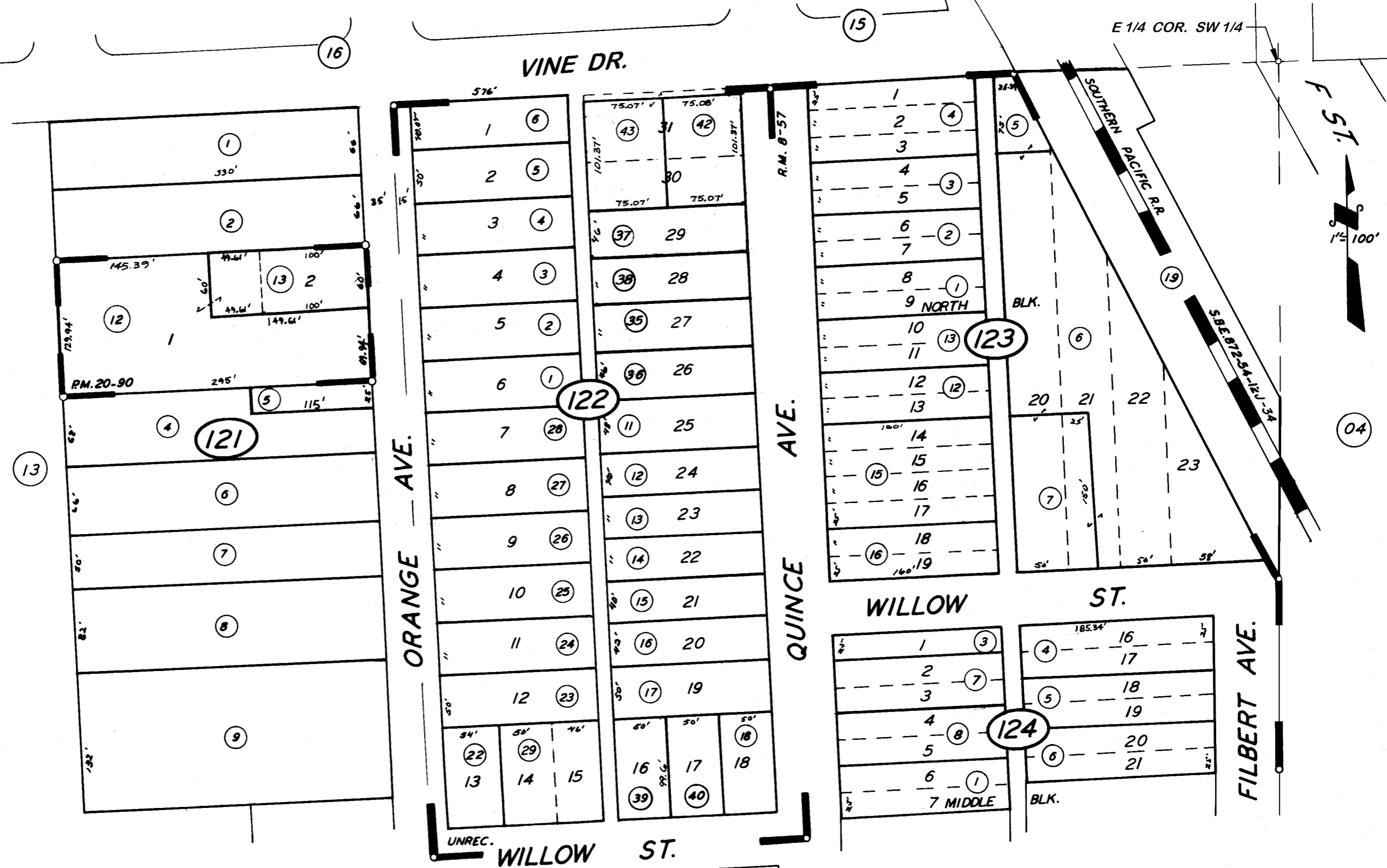
DISCLAIMER

THIS MAP WAS PREPARED FOR LOCAL PROPERTY ASSESSMENT PURPOSES ONLY. THE PARCELS SHOWN HEREON MAY NOT COMPLY WITH STATE AND LOCAL SUBDIVISION ORDINANCES. NO LIABILITY IS ASSUMED FOR THE USE OF THE INFORMATION HEREON.

REVISED: 04/06/2007
REASON: 2005-0063671
TECHNICIAN: KMS

N. POR. SE¹/₄ OF SW¹/₄ SEC. 3, T.19S., R.26E., M.D.B.&M.

TAX CODE AREA **138-12**
002-014



POR. BAKER'S ADD., R.M. 8-57
DODSON ADD. NO.2, UNREC.
PARCEL MAP 1989, P.M. 20-90
POR. RECORD OF SURVEY, L.S.27-46

CITY OF EXETER
ASSESSOR'S MAPS BK. 138, PG. 12.
COUNTY OF TULARE, CALIF.

NOTE — ASSESSOR'S BLOCK NUMBERS SHOWN IN ELLIPSES
ASSESSOR'S PARCEL NUMBERS SHOWN IN CIRCLES

