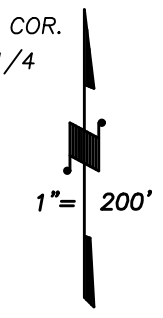
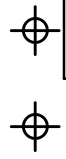
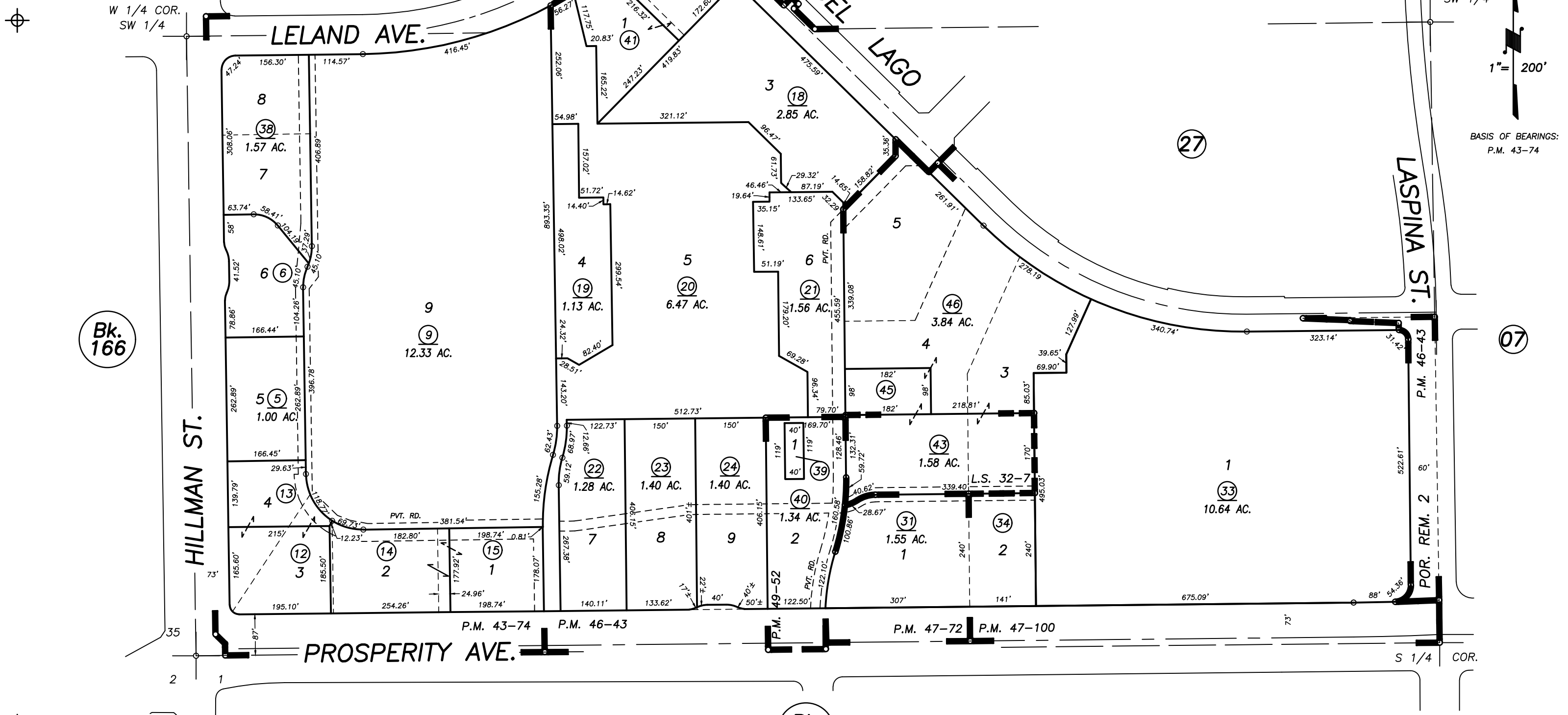


DISCLAIMER
THIS MAP WAS PREPARED FOR LOCAL PROPERTY ASSESSMENT PURPOSES ONLY AND THE PARCELS SHOWN HEREON MAY NOT COMPLY WITH STATE AND LOCAL SUBDIVISION ORDINANCES, AND NO LIABILITY IS ASSUMED FOR THE USE OF THE INFORMATION SHOWN HEREON. R & T CODE SEC. 327, 408.3, ETC.



BASIS OF BEARINGS:
P.M. 43-74



Bk. 166

Bk. 171

POR. PARCEL MAP NO. 4270, P.M. 43-74
 POR. PARCEL MAP NO. 4538, P.M. 46-43
 PARCEL MAP NO. 4667, P.M. 47-72
 PARCEL MAP NO. 4695, P.M. 47-100
 PARCEL MAP NO. 4847, P.M. 49-52
 POR. RECORD OF SURVEY, L.S. 30-25 (HILLMAN ST.)
 RECORD OF SURVEY, L.S. 32-7

CITY OF TULARE
 ASSESSOR'S MAPS BK. 149 , PG. 12
 COUNTY OF TULARE, CALIFORNIA, U.S.A.

NOTE: Assessor's Parcel Numbers Shown in Circles (1) (123)
 Assessor's Block Numbers Shown in Ellipses

2018-0067701	02/07/2019	GL
REVISION	DATE	TECH