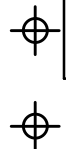


DISCLAIMER

THIS MAP WAS PREPARED FOR LOCAL PROPERTY ASSESSMENT PURPOSES ONLY AND THE PARCELS SHOWN HEREON MAY NOT COMPLY WITH STATE AND LOCAL SUBDIVISION ORDINANCES, AND NO LIABILITY IS ASSUMED FOR THE USE OF THE INFORMATION SHOWN HEREON.

06

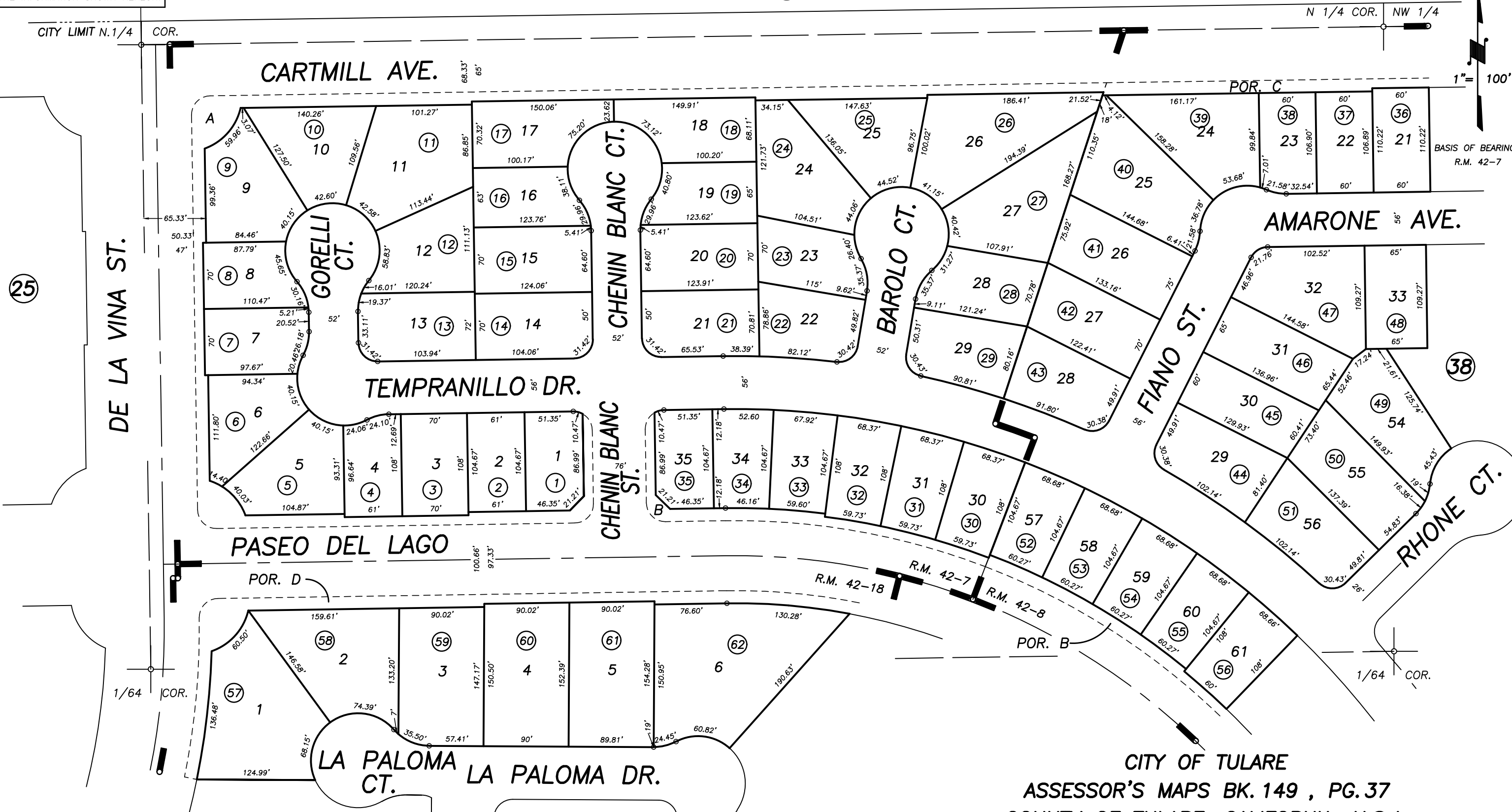


CITY LIMIT N.1/4 COR.

N 1/4 COR. NW 1/4

1" = 100'

BASIS OF BEARINGS:
R.M. 42-7



25

38

40

POR. VISTA DEL SOL NO. 5, R.M. 42-7
POR. VISTA DEL SOL NO. 4, R.M. 42-8
POR. LA PALOMA NO. 1, R.M. 42-18

CITY OF TULARE
ASSESSOR'S MAPS BK. 149 , PG. 37
COUNTY OF TULARE, CALIFORNIA, U.S.A.

NOTE: Assessor's Parcel Numbers Shown in Circles
Assessor's Block Numbers Shown in Elipses

T.R.A.C. UPDATE	07/24/2007	JRS
REVISION	DATE	TECH