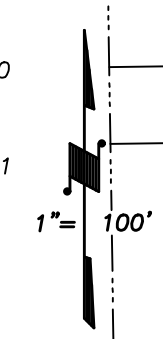
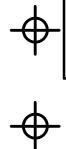
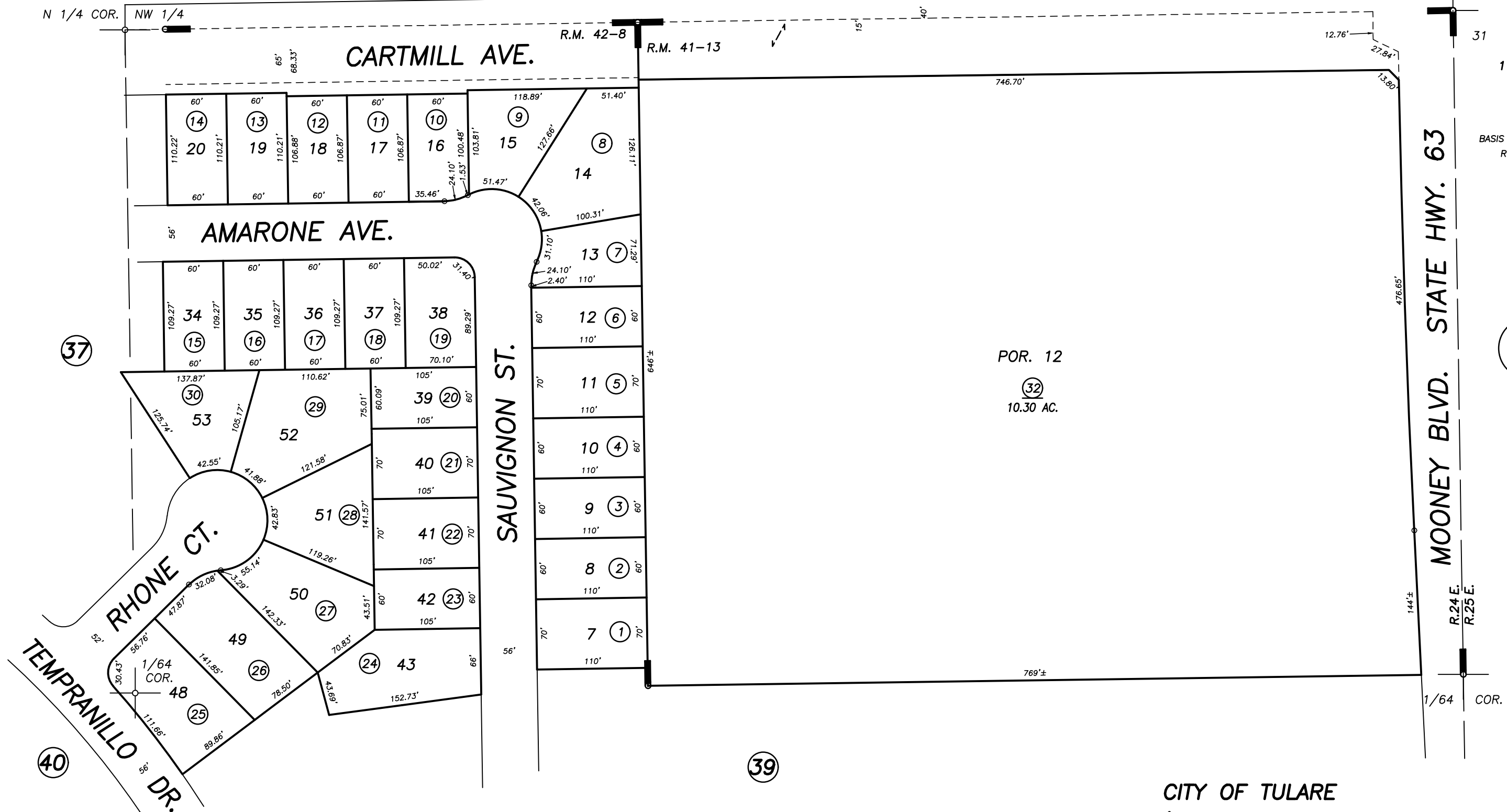


DISCLAIMER

THIS MAP WAS PREPARED FOR LOCAL PROPERTY ASSESSMENT PURPOSES ONLY AND THE PARCELS SHOWN HEREON MAY NOT COMPLY WITH STATE AND LOCAL SUBDIVISION ORDINANCES, AND NO LIABILITY IS ASSUMED FOR THE USE OF THE INFORMATION SHOWN HEREON.



BASIS OF BEARINGS:
R.M. 42-8



MOONEY BLVD. STATE HWY. 63

Bk. 150

CITY LIMIT

POR. DEL LAGO NORTHEAST SUBDIVISION, R.M. 41-13
POR. VISTA DEL SOL NO. 4, R.M. 42-8

CITY OF TULARE
ASSESSOR'S MAPS BK. 149 , PG. 38
COUNTY OF TULARE, CALIFORNIA, U.S.A.

ADJ PG UPDATE	12/30/2022	JOS
REVISION	DATE	TECH