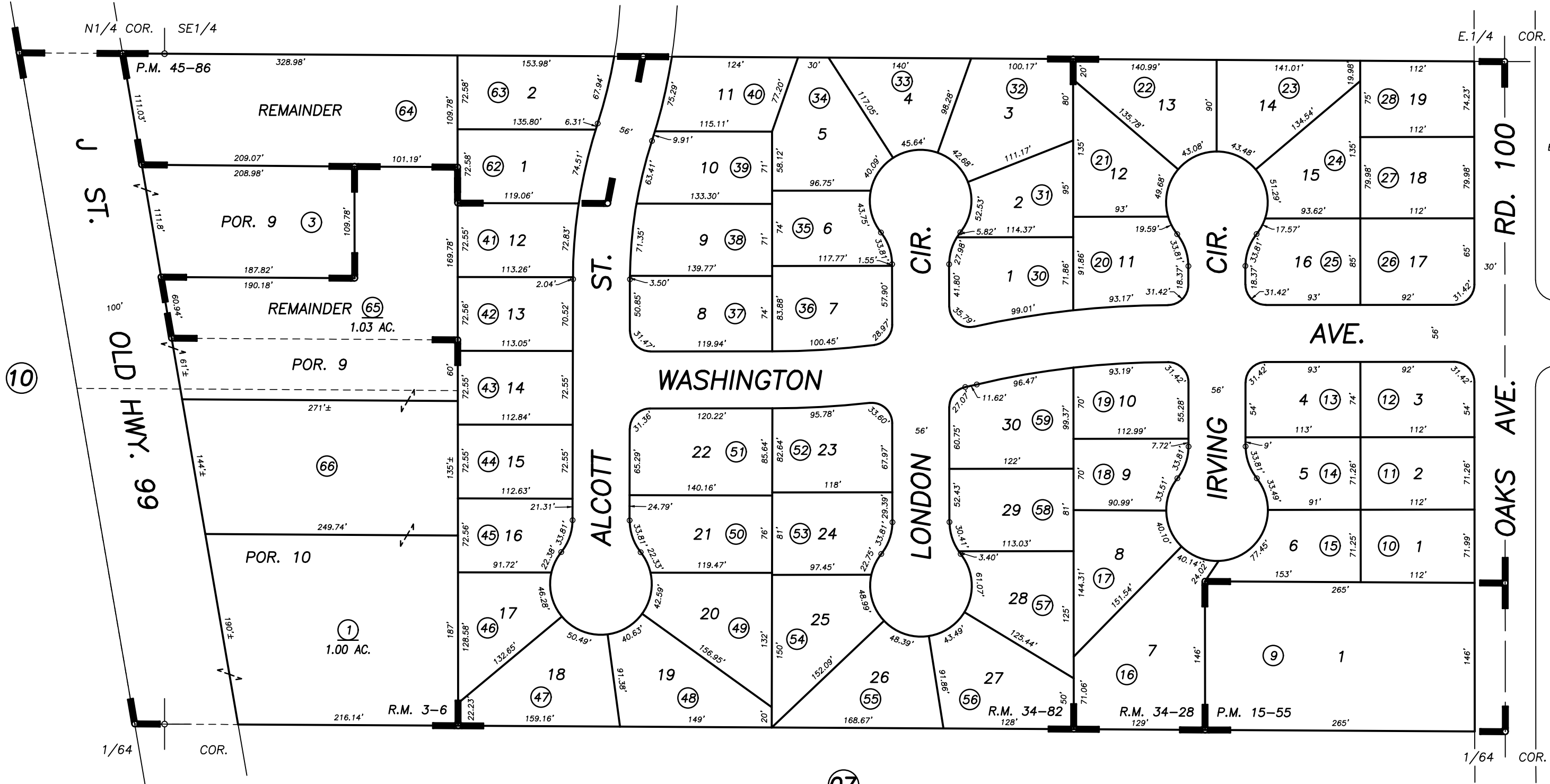
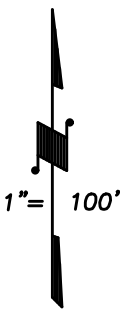


N1/2 OF NE1/4 OF SE1/4 SEC.34, T.19S., R.24E., M.D.B.&M.

Tax Area Codes 164-06

005-056 005-083
 005-106 005-089
 005-121

DISCLAIMER
 THIS MAP WAS PREPARED FOR LOCAL PROPERTY ASSESSMENT PURPOSES ONLY AND THE PARCELS SHOWN HEREON MAY NOT COMPLY WITH STATE AND LOCAL SUBDIVISION ORDINANCES, AND NO LIABILITY IS ASSUMED FOR THE USE OF THE INFORMATION SHOWN HEREON.



BASIS OF BEARINGS:
 P.M. 45-86

Bk. 166

POR. ZUMWALT'S SUB., R.M. 3-6
 PARCEL MAP NO. 1454, P.M. 15-55
 RED OAK ESTATES NO. 1, R.M. 34-28
 RED OAK ESTATES NO. 2, R.M. 34-82
 PARCEL MAP NO. 4481, P.M. 45-86

CITY OF TULARE
 ASSESSOR'S MAPS BK. 164 , PG.06
 COUNTY OF TULARE, CALIFORNIA, U.S.A.

NOTE: Assessor's Parcel Numbers Shown in Circles ① 123
 Assessor's Block Numbers Shown in Ellipses (10) (14) (07)

2010-0030116	04/02/2014	RLW
REVISION	DATE	TECH