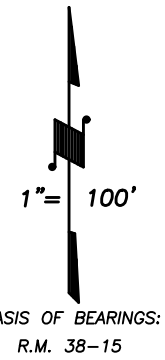
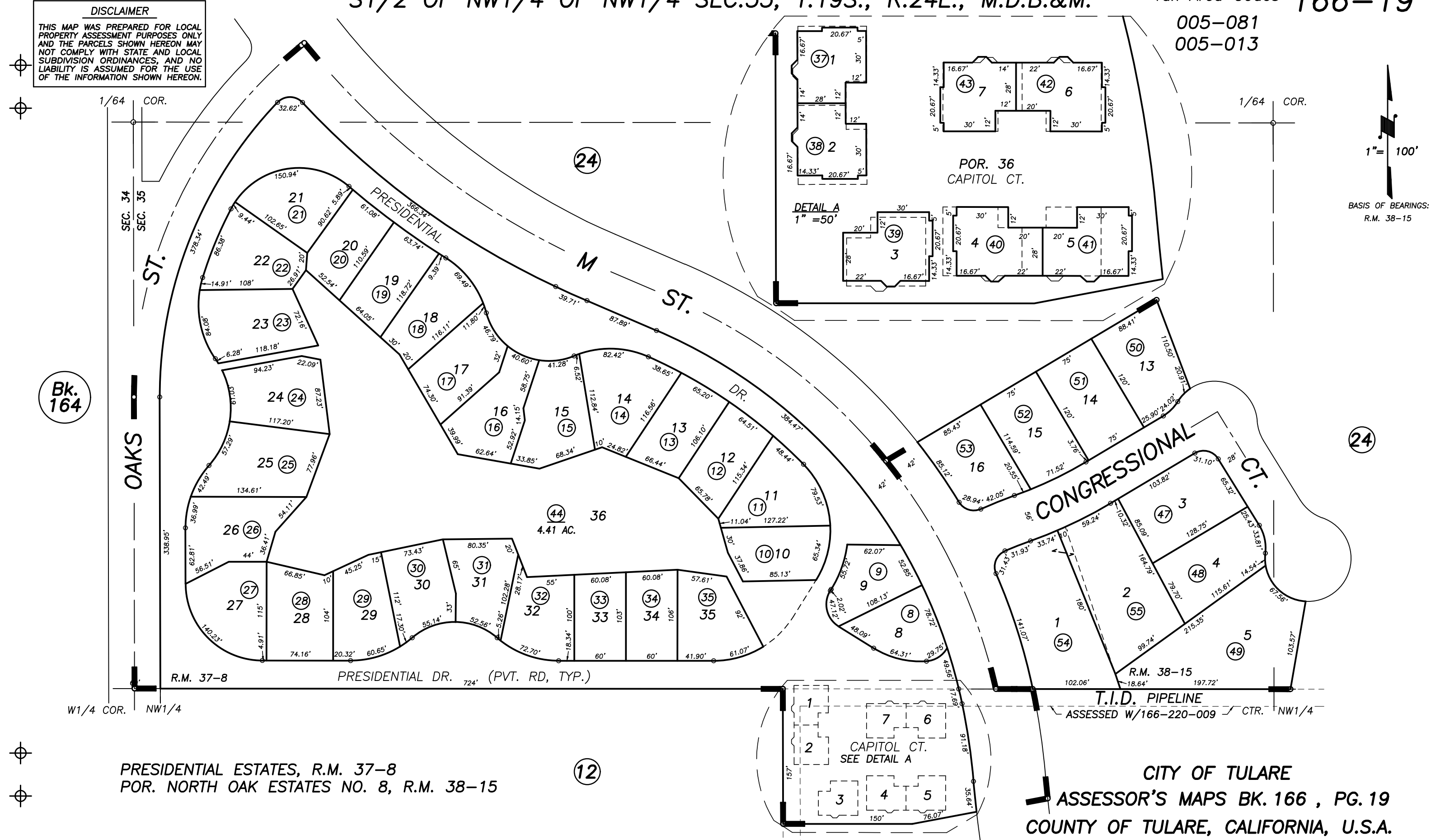


S1/2 OF NW1/4 OF NW1/4 SEC.35, T.19S., R.24E., M.D.B.&M.

Tax Area Codes 166-19

DISCLAIMER
 THIS MAP WAS PREPARED FOR LOCAL PROPERTY ASSESSMENT PURPOSES ONLY AND THE PARCELS SHOWN HEREON MAY NOT COMPLY WITH STATE AND LOCAL SUBDIVISION ORDINANCES, AND NO LIABILITY IS ASSUMED FOR THE USE OF THE INFORMATION SHOWN HEREON.

005-081
 005-013



Bk. 164

PRESIDENTIAL ESTATES, R.M. 37-8
 POR. NORTH OAK ESTATES NO. 8, R.M. 38-15

CITY OF TULARE
 ASSESSOR'S MAPS BK. 166 , PG. 19
 COUNTY OF TULARE, CALIFORNIA, U.S.A.

NOTE: Assessor's Parcel Numbers Shown in Circles (1) 123
 Assessor's Block Numbers Shown in Elipses (1) 123

ADD TOWNSHIP LN.	06/14/2011	JRS
REVISION	DATE	TECH