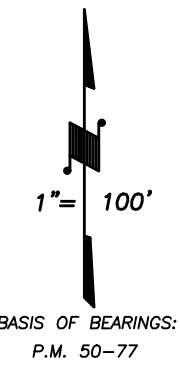
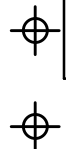


(23)

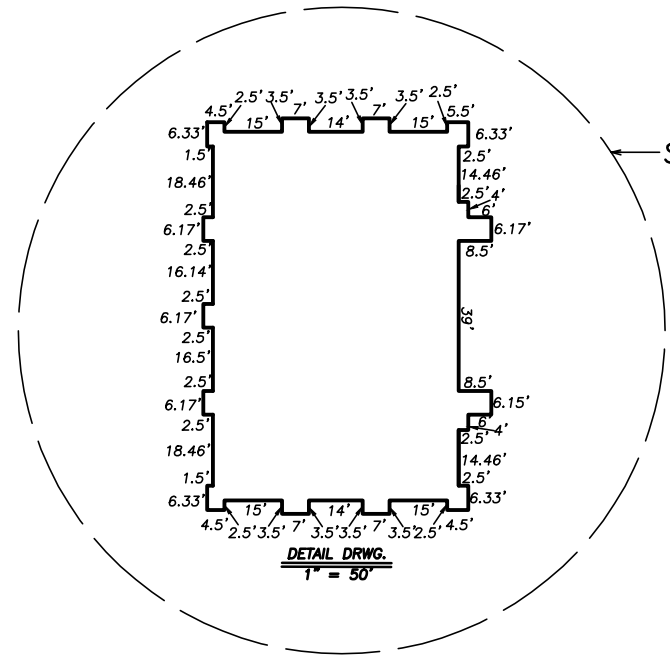
DISCLAIMER
THIS MAP WAS PREPARED FOR LOCAL PROPERTY ASSESSMENT PURPOSES ONLY AND THE PARCELS SHOWN HEREON MAY NOT COMPLY WITH STATE AND LOCAL SUBDIVISION ORDINANCES, AND NO LIABILITY IS ASSUMED FOR THE USE OF THE INFORMATION SHOWN HEREON. R & T CODE SEC. 327, 408.3, ETC.



BASIS OF BEARINGS:
P.M. 50-77

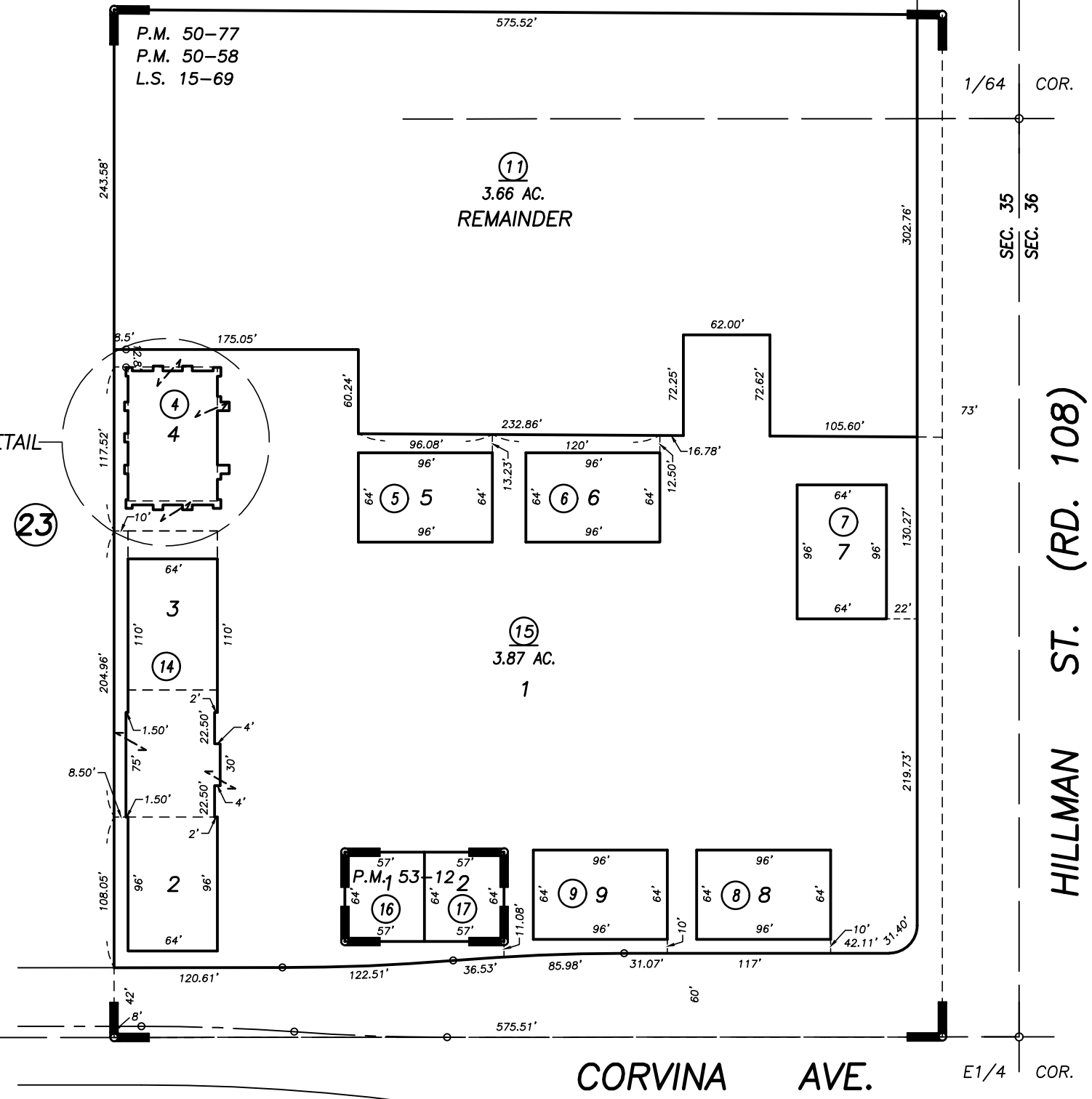
1/64 COR.

1/64 COR.



SEE DETAIL

(23)



S1/4 COR. NE 1/4

E1/4 COR.

CORVINA AVE.

HILLMAN ST. (RD. 108)

Bk. 149

(02)

POR. RECORD OF SURVEY, L.S. 15-69
POR. RECORD OF SURVEY (RD. 108), L.S. 30-25
POR. PARCEL MAP NO. 4053, P.M. 50-58
PARCEL MAP NO. 4972, P.M. 50-77
PARCEL MAP NO. 5205, P.M. 53-12

CITY OF TULARE
ASSESSOR'S MAPS BK. 166 , PG. 21
COUNTY OF TULARE, CALIFORNIA, U.S.A.