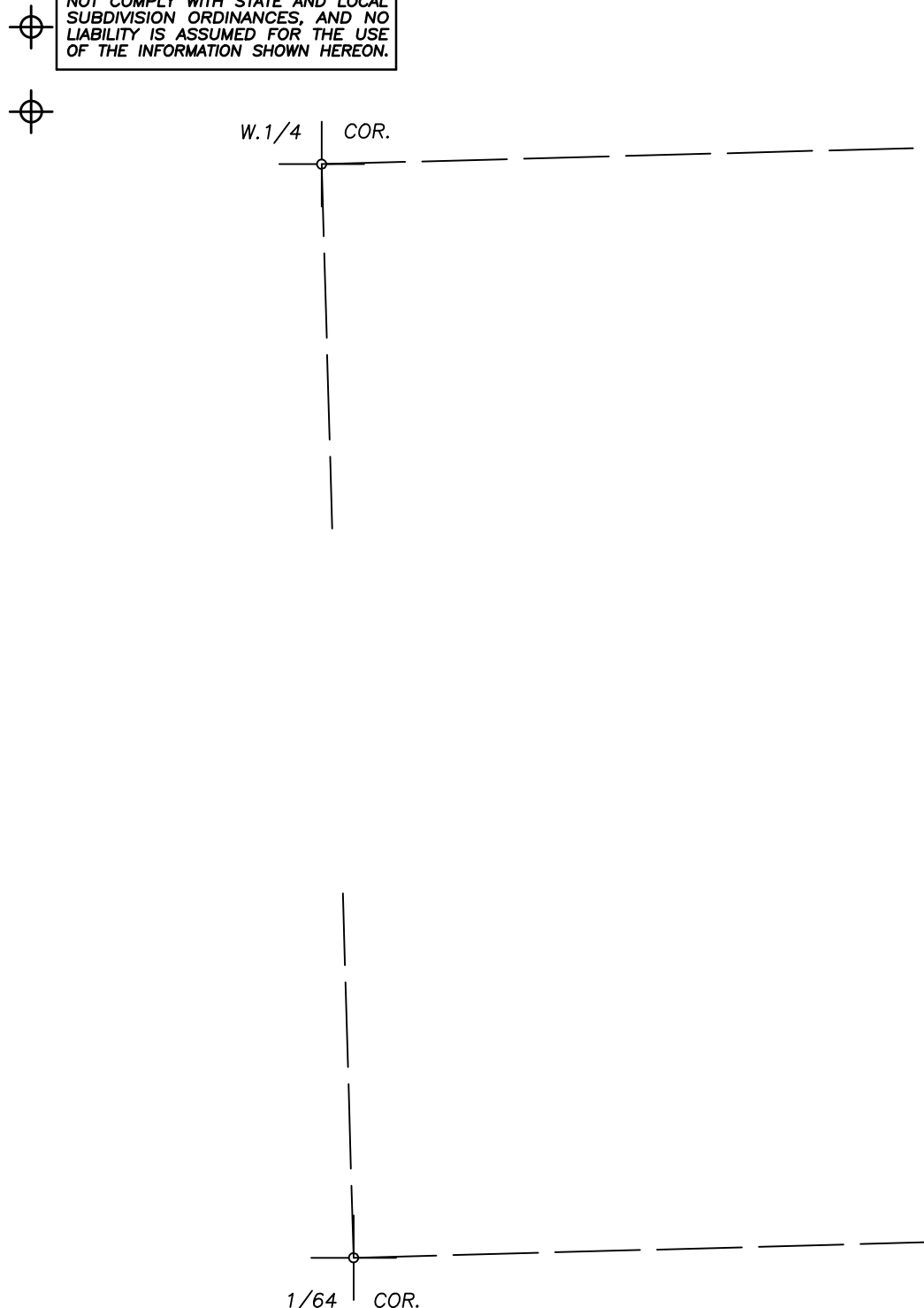


N1/2 OF NW1/4 OF SW1/4 SEC.4, T.20S., R.24E., M.D.B.&M.

Tax Area Codes 168-35

005-089

**DISCLAIMER**  
 THIS MAP WAS PREPARED FOR LOCAL PROPERTY ASSESSMENT PURPOSES ONLY AND THE PARCELS SHOWN HEREON MAY NOT COMPLY WITH STATE AND LOCAL SUBDIVISION ORDINANCES, AND NO LIABILITY IS ASSUMED FOR THE USE OF THE INFORMATION SHOWN HEREON.

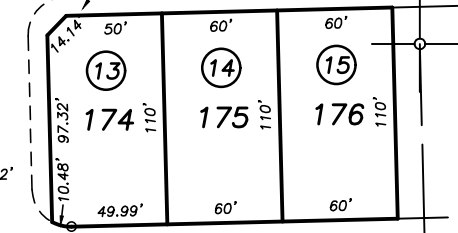


POR. MONTECITO, R.M. 42-9

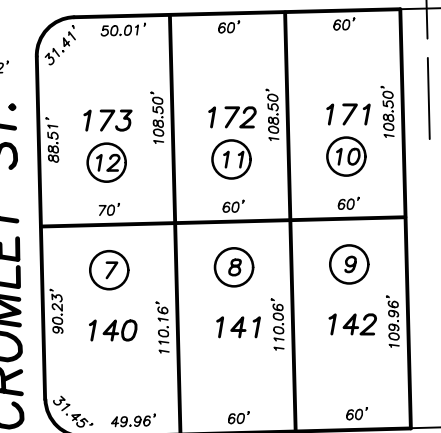
01

PLEASANT AVE.

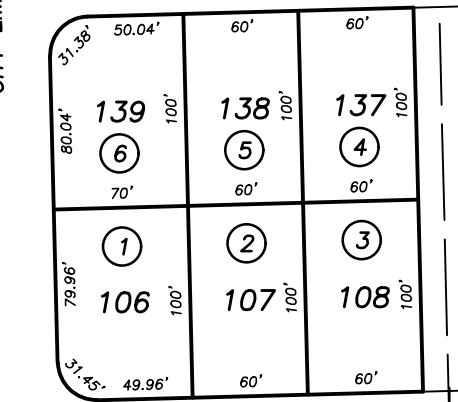
R.M. 42-9 POR. C 42' N 1/4 COR. SW 1/4



ANDERSON AVE.



ELDRIDGE AVE.



BILLING AVE.

1/64 COR.

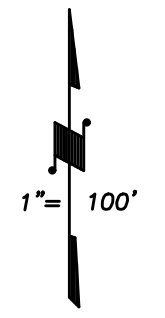
02

CROMLEY ST.

CITY LIMIT

36

37



BASIS OF BEARINGS:  
R.M. 42-9

CITY OF TULARE  
 ASSESSOR'S MAPS BK. 168 , PG. 35  
 COUNTY OF TULARE, CALIFORNIA, U.S.A.