

DISCLAIMER

THIS MAP WAS PREPARED FOR LOCAL PROPERTY ASSESSMENT PURPOSES ONLY AND THE PARCELS SHOWN HEREON MAY NOT COMPLY WITH STATE AND LOCAL SUBDIVISION ORDINANCES, AND NO LIABILITY IS ASSUMED FOR THE USE OF THE INFORMATION SHOWN HEREON.

01

22

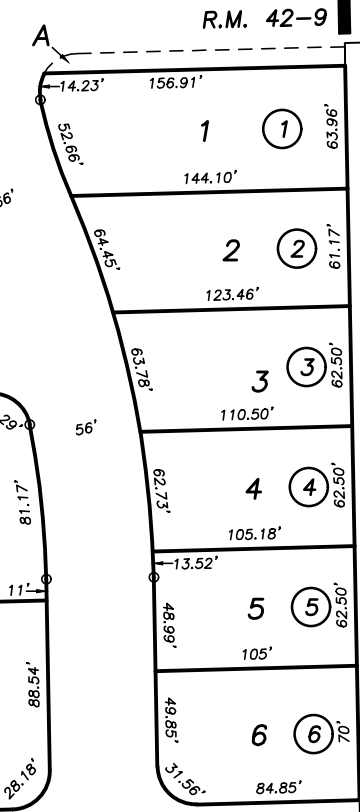
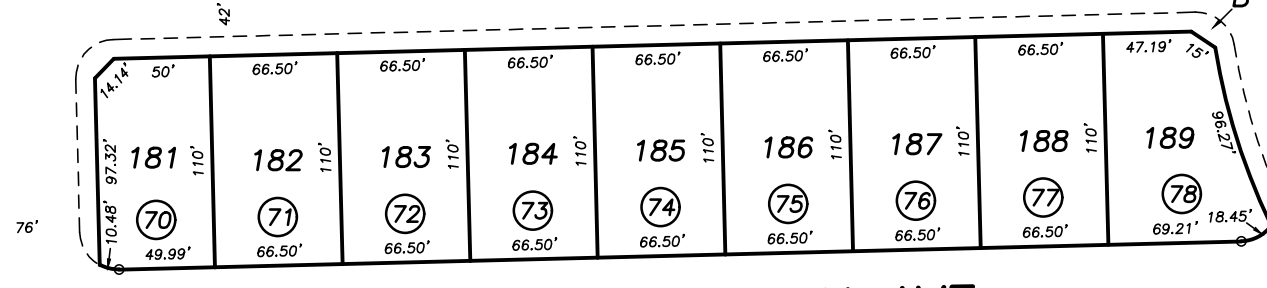
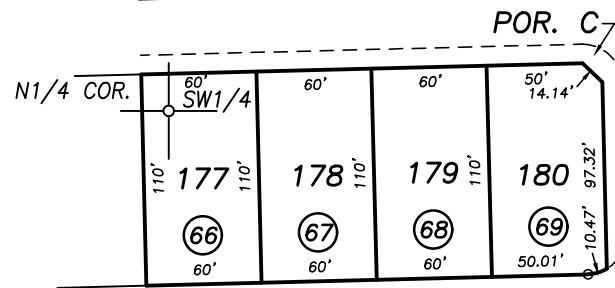
PLEASANT AVE.

R.M. 42-9

CTR. SEC.

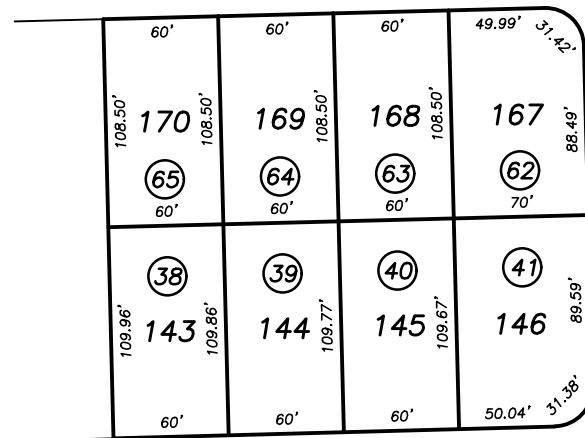
1" = 100'

BASIS OF BEARINGS: R.M. 42-9

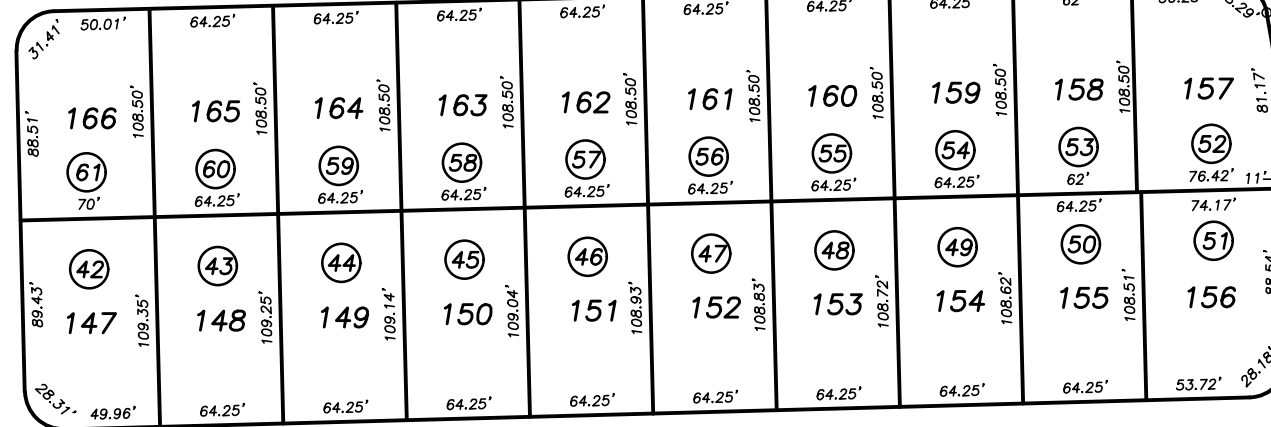


ANDERSON AVE.

35



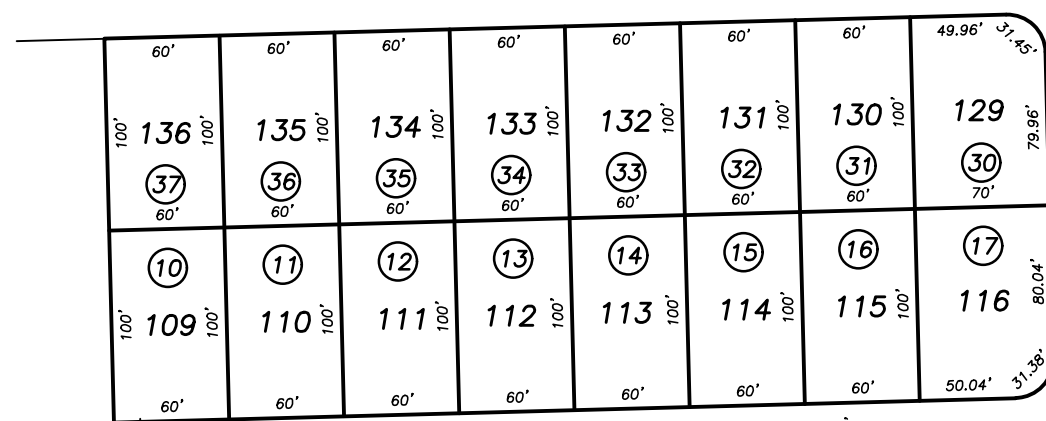
SMITH ST.



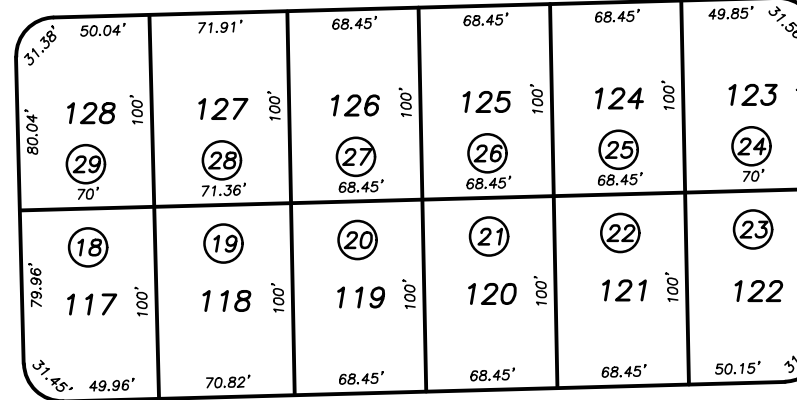
ELDRIDGE AVE.

HARRIS ST.

LA DAWNA ST.

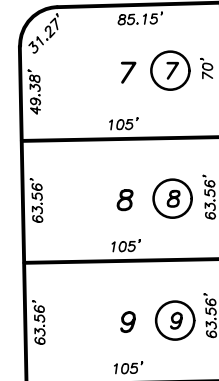


38



BILLING AVE.

02



MONTECITO, R.M. 42-9

CITY OF TULARE

ASSESSOR'S MAPS BK. 168 , PG. 36 COUNTY OF TULARE, CALIFORNIA, U.S.A.

NOTE: Assessor's Parcel Numbers Shown in Circles 123 Assessor's Block Numbers Shown in Elipses

Table with 3 columns: 2006-0038185, 09/11/2006, JRS; REVISION, DATE, TECH