

POR. SE 1/4 OF NE 1/4, SEC. 3, T. 20 S., R. 24 E., M. D. B. & M.

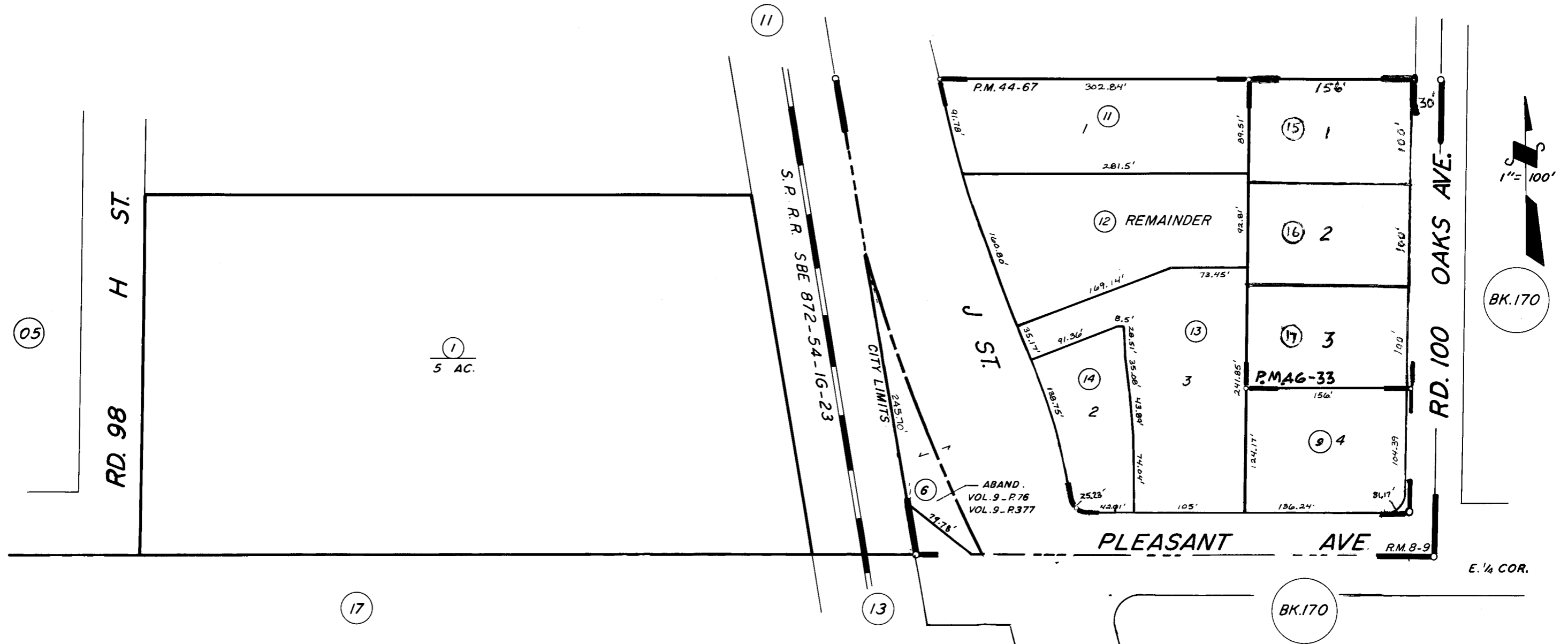
TAX CODE AREA

169-12

149-003

5-017

5-057



POR. CROCKER OAK PARK R.M. 8-9
PARCEL MAP 4362, P.M. 44-67
PARCEL MAP 4528, P.M. 46-33

CITY OF TULARE
ASSESSOR'S MAPS BK. 169, PG. 12.
COUNTY OF TULARE, CALIF.

NOTE -- ASSESSOR'S BLOCK NUMBERS SHOWN IN ELLIPSES
ASSESSOR'S PARCEL NUMBERS SHOWN IN CIRCLES

