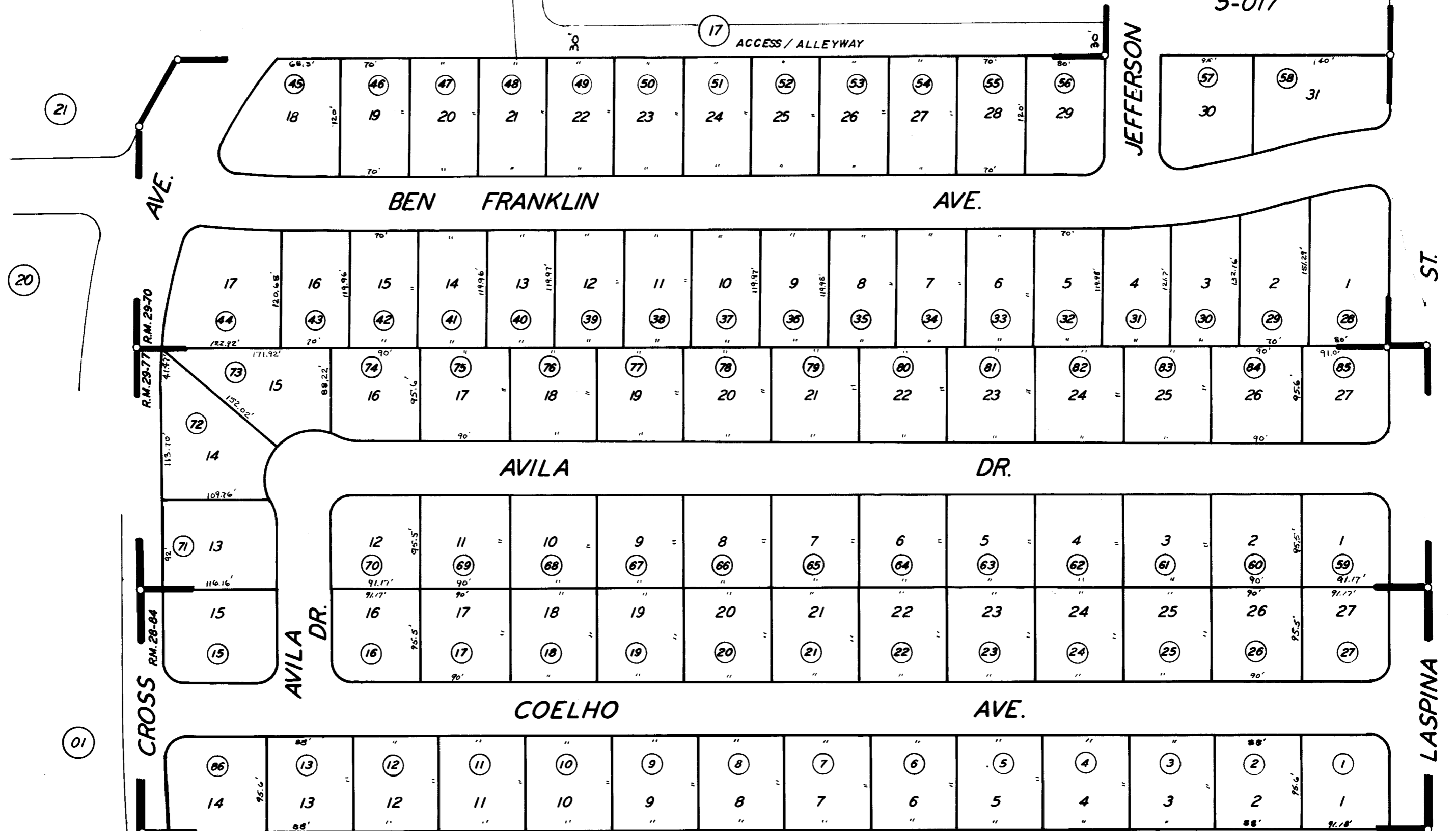


POR. OF S¹/₂ OF SE¹/₄ OF NW¹/₄ OF SEC.1, T.20S., R.24E., M.D.B. & M.

TAX CODE AREA 171-14
5-017



AVILA - COELHO SUB. UNIT NO. 1,
 AVILA - COELHO SUB. UNIT NO. 2,
 POR. ZINK ESTATES UNIT NO.1,
 POR. MT. VIEW ESTATES NO. 3,

R.M. 28-84
 R.M. 29-77
 R.M. 29-70

R.M. 28-45

CITY OF TULARE
 ASSESSOR'S MAPS BK. 171 PG. 14
 COUNTY OF TULARE, CALIF.

NOTE - ASSESSOR'S BLOCK NUMBERS SHOWN IN ELLIPSES
 ASSESSOR'S PARCEL NUMBERS SHOWN IN CIRCLES