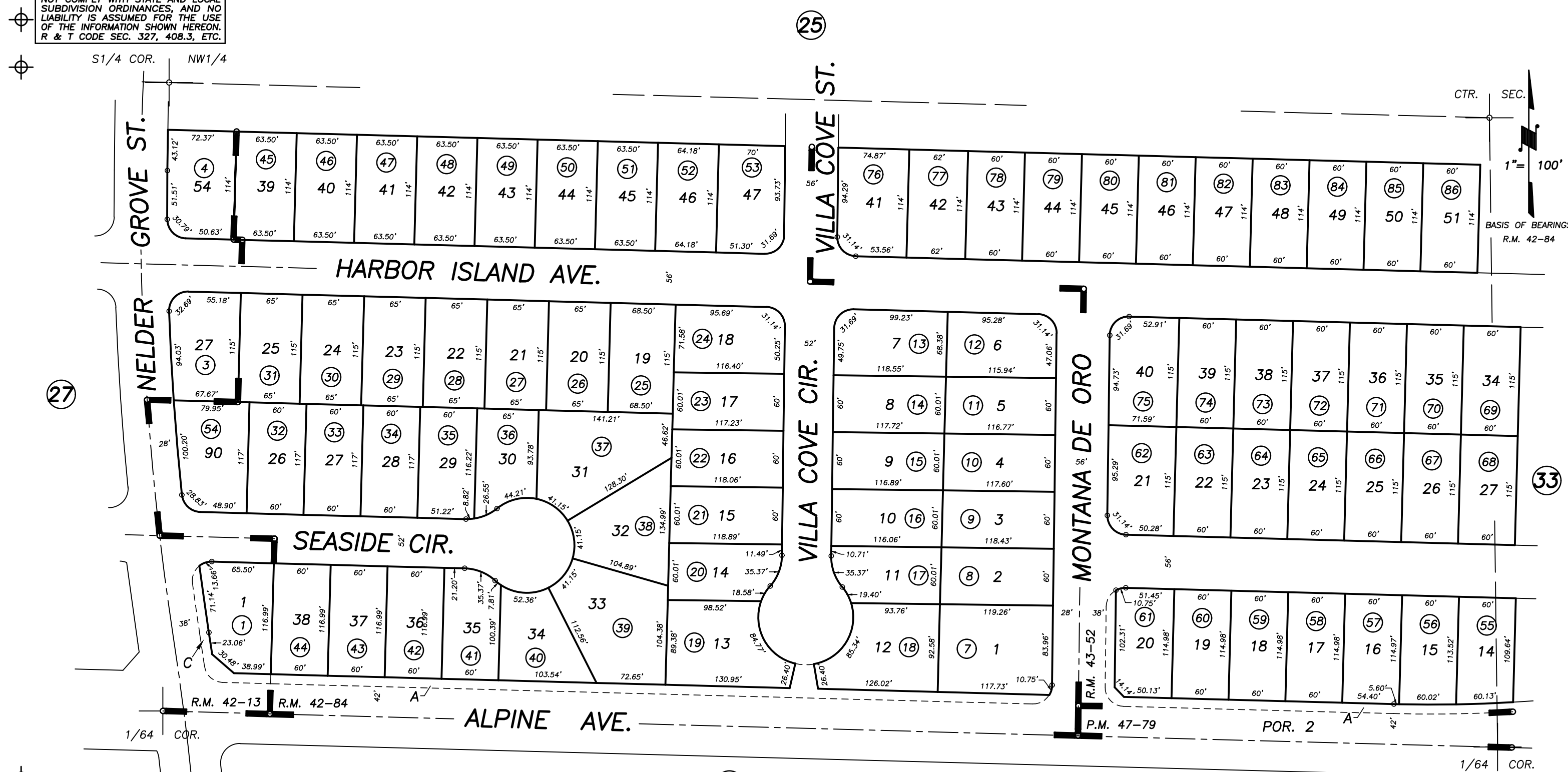


DISCLAIMER
THIS MAP WAS PREPARED FOR LOCAL PROPERTY ASSESSMENT PURPOSES ONLY AND THE PARCELS SHOWN HEREON MAY NOT COMPLY WITH STATE AND LOCAL SUBDIVISION ORDINANCES, AND NO LIABILITY IS ASSUMED FOR THE USE OF THE INFORMATION SHOWN HEREON. R & T CODE SEC. 327, 408.3, ETC.



POR. PALM RANCH NO. 2, R.M. 42-13
POR. PALM RANCH NO. 3, R.M. 42-84
POR. PALM RANCH NO. 5, R.M. 43-52
POR. PARCEL MAP NO. 4674, P.M. 47-79

CITY OF TULARE
ASSESSOR'S MAPS BK. 172 , PG. 26
COUNTY OF TULARE, CALIFORNIA, U.S.A.

NOTE: Assessor's Parcel Numbers Shown in Circles
Assessor's Block Numbers Shown in Elipses

2014-0065515	01/05/2015	ARP
REVISION	DATE	TECH