

DISCLAIMER

THIS MAP WAS PREPARED FOR LOCAL PROPERTY ASSESSMENT PURPOSES ONLY AND THE PARCELS SHOWN HEREON MAY NOT COMPLY WITH STATE AND LOCAL SUBDIVISION ORDINANCES, AND NO LIABILITY IS ASSUMED FOR THE USE OF THE INFORMATION SHOWN HEREON.

W 1/4 COR.

S1/4 COR. NW1/4

RD. 116 MOONEY BLVD.

24

EDGEWATER ST.

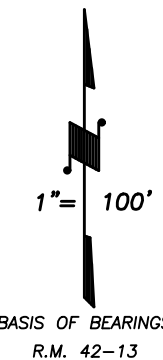
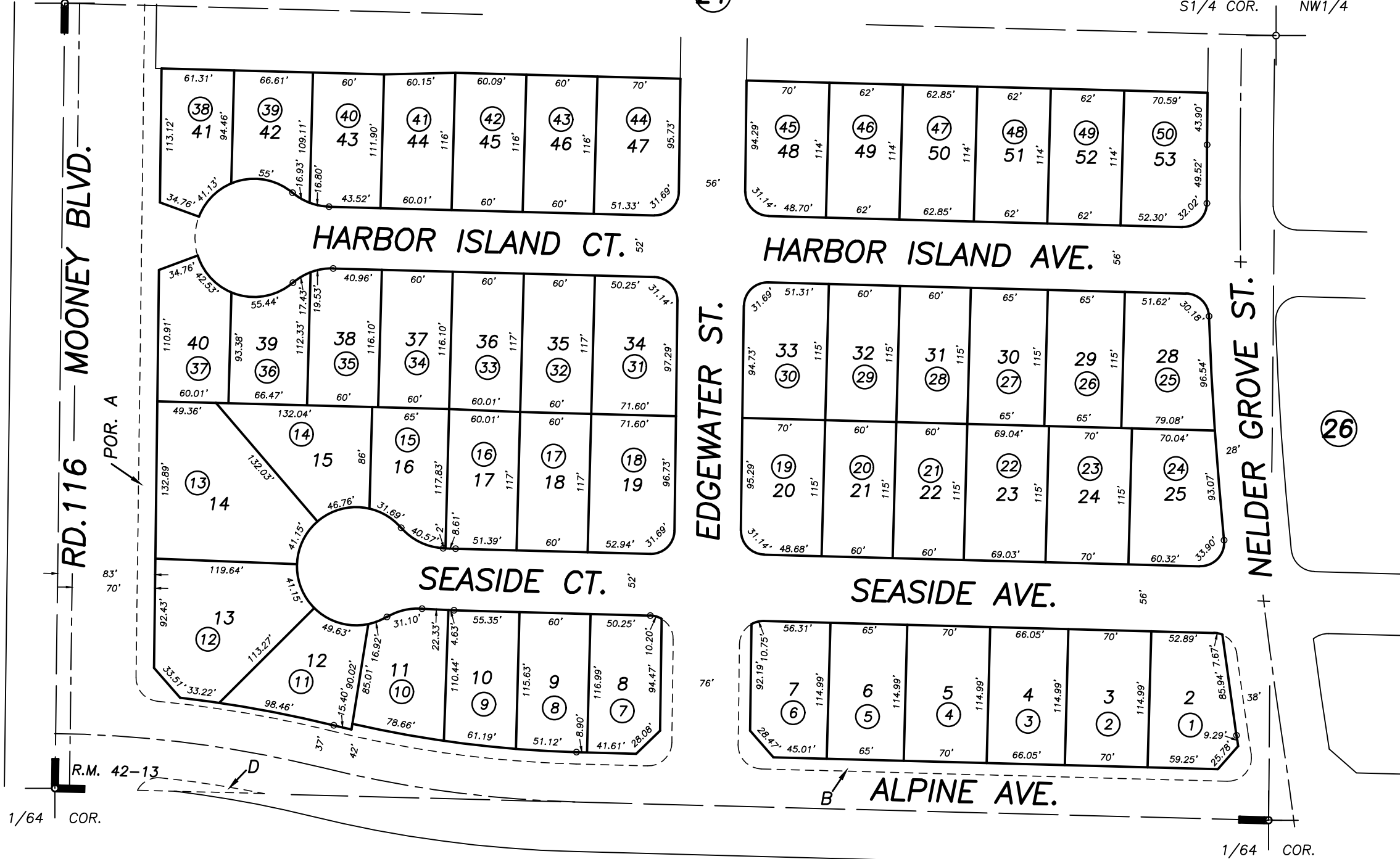
28

R.M. 42-13

1/64 COR.

1/64 COR.

POR. PALM RANCH NO.2, R.M. 42-13



Bk. 177

26

CITY OF TULARE
ASSESSOR'S MAPS BK. 172 , PG. 27
COUNTY OF TULARE, CALIFORNIA, U.S.A.

NOTE: Assessor's Parcel Numbers Shown in Circles
Assessor's Block Numbers Shown in Ellipses

2006-0050850	12/06/2006	ASG
REVISION	DATE	TECH