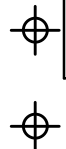


DISCLAIMER

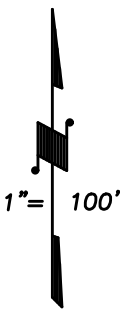
THIS MAP WAS PREPARED FOR LOCAL PROPERTY ASSESSMENT PURPOSES ONLY AND THE PARCELS SHOWN HEREON MAY NOT COMPLY WITH STATE AND LOCAL SUBDIVISION ORDINANCES, AND NO LIABILITY IS ASSUMED FOR THE USE OF THE INFORMATION SHOWN HEREON.



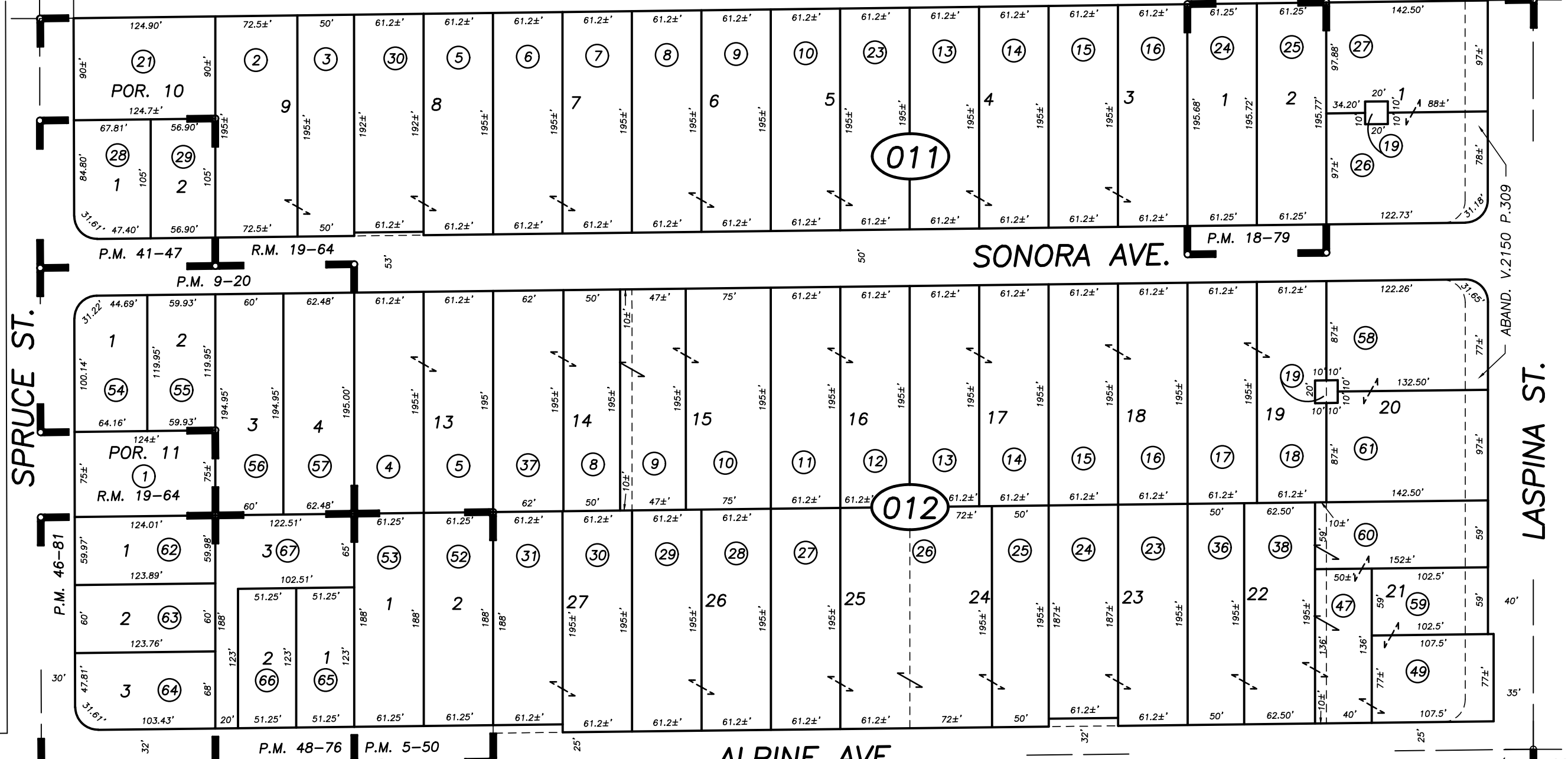
16

NW 1/4 COR. SW 1/4

CTR. SEC.



BASIS OF BEARINGS:
P.M. 48-76



08

29

POR. TRACT 33, R.M. 19-64
PARCEL MAP NO. 450, P.M. 5-50,
PARCEL MAP NO. 820, P.M. 9-20
PARCEL MAP NO. 1778, O.M. 18-79
PARCEL MAP NO. 4043, P.M. 41-47
PARCEL MAP NO. 4576, P.M. 46-81
PARCEL MAP NO. 4771, P.M. 48-76

WHITNEY ST.

CANBY ST.

02

CITY OF TULARE
ASSESSOR'S MAPS BK. 177 , PG.01
COUNTY OF TULARE, CALIFORNIA, U.S.A.

NOTE: Assessor's Parcel Numbers Shown in Circles
Assessor's Block Numbers Shown in Elipses

2022-0011184	3/28/2023	JME
REVISION	DATE	TECH