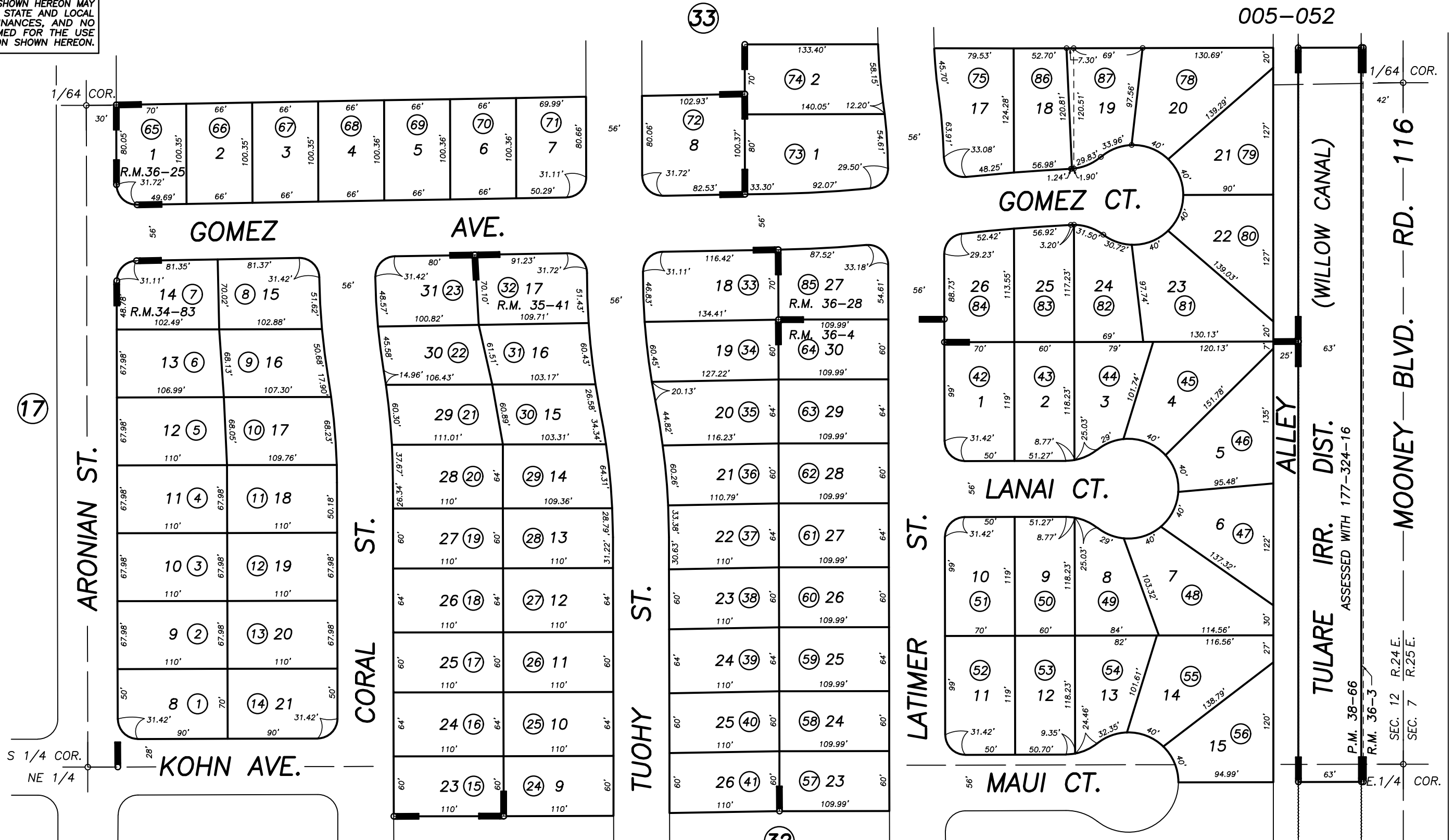


DISCLAIMER
 THIS MAP WAS PREPARED FOR LOCAL PROPERTY ASSESSMENT PURPOSES ONLY AND THE PARCELS SHOWN HEREON MAY NOT COMPLY WITH STATE AND LOCAL SUBDIVISION ORDINANCES, AND NO LIABILITY IS ASSUMED FOR THE USE OF THE INFORMATION SHOWN HEREON.

POR. N 1/2 OF SE 1/4 OF NE 1/4 SEC. 12, T.20S., R.24E., M.D.B. & M.

Tax Area Code 177-34

005-040
 005-052



POR. TERRACE PARK ESTATES NO. 5, R.M. 34-83
 POR. TERRACE PARK ESTATES NO. 6, R.M. 35-41
 POR. TERRACE PARK ESTATES NO. 8, R.M. 36-4
 SUNNYSIDE ESTATES NO. 3, R.M. 36-25
 POR. TERRACE PARK ESTATES NO. 9, R.M. 36-28
 POR. TERRACE PARK ESTATES NO. 7, R.M. 36-3
 POR. PARCEL MAP NO. 3763, P.M. 38-66

CITY OF TULARE
 ASSESSOR'S MAPS BK. 177 , PG. 34
 COUNTY OF TULARE, CALIFORNIA, U.S.A.

NOTE: Assessor's Parcel Numbers Shown in Circles (1) (123)
 Assessor's Block Numbers Shown in Ellipses

2002-0033605	01/28/2008	KMS
REVISION	DATE	TECH