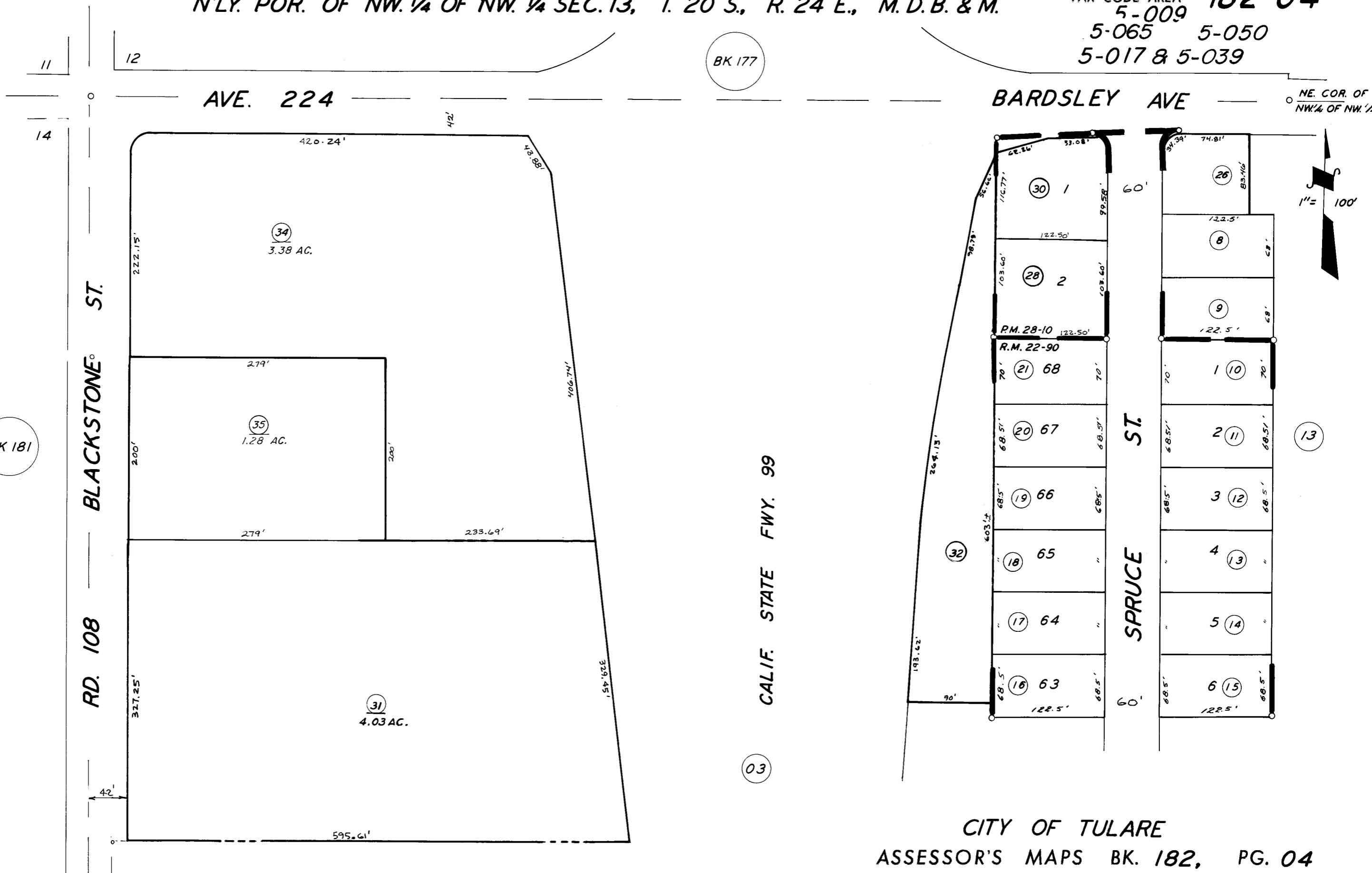


N'LY. POR. OF NW. 1/4 OF NW. 1/4 SEC. 13, T. 20 S., R. 24 E., M. D. B. & M.

TAX CODE AREA **182-04**
5-009
5-065 5-050
5-017 & 5-039



POR. TRACT NO 324 R.M. 22-90
PARCEL MAP 2709, P.M. 28-10

CITY OF TULARE
ASSESSOR'S MAPS BK. 182, PG. 04
COUNTY OF TULARE, CALIF.

3-1-64
4-9-63 TN

NOTE - ASSESSOR'S BLOCK NUMBERS SHOWN IN ELLIPSES
ASSESSOR'S PARCEL NUMBERS SHOWN IN CIRCLES