

Bk.  
177

DISCLAIMER

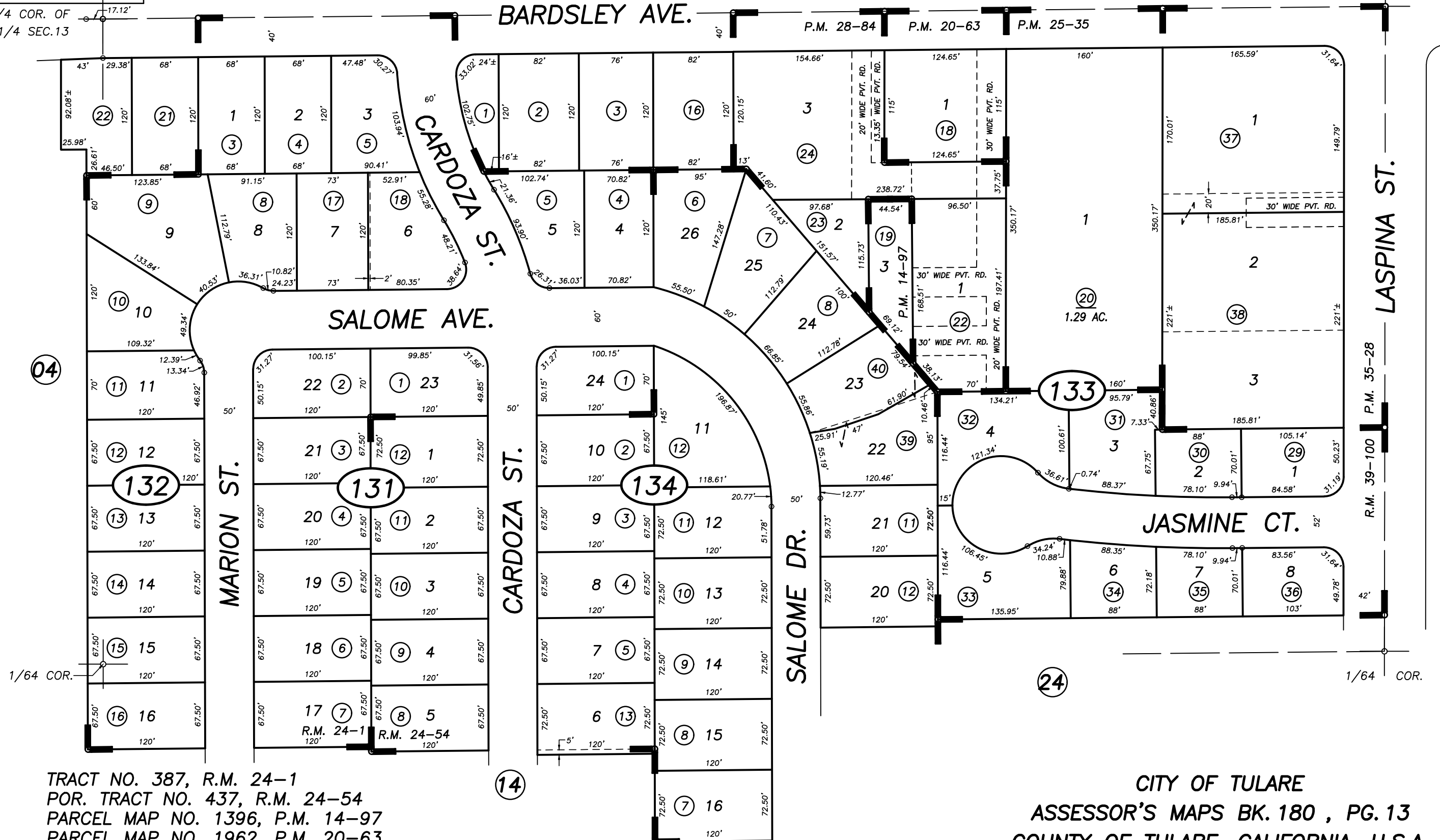
THIS MAP WAS PREPARED FOR LOCAL PROPERTY ASSESSMENT PURPOSES ONLY AND THE PARCELS SHOWN HEREON MAY NOT COMPLY WITH STATE AND LOCAL SUBDIVISION ORDINANCES, AND NO LIABILITY IS ASSUMED FOR THE USE OF THE INFORMATION SHOWN HEREON.

N1/4 COR. OF  
NW1/4 SEC.13

N.1/4 COR.

1" = 100'

BASIS OF BEARINGS:  
P.M. 39-100



TRACT NO. 387, R.M. 24-1  
POR. TRACT NO. 437, R.M. 24-54  
PARCEL MAP NO. 1396, P.M. 14-97  
PARCEL MAP NO. 1962, P.M. 20-63  
PARCEL MAP NO. 2434, P.M. 25-35  
PARCEL MAP NO. 2783, P.M. 28-84  
PARCEL MAP NO. 3426, P.M. 35-28

LASPINA APARTMENTS, R.M. 39-100

CITY OF TULARE  
ASSESSOR'S MAPS BK. 180 , PG. 13  
COUNTY OF TULARE, CALIFORNIA, U.S.A.

NOTE: Assessor's Parcel Numbers Shown in Circles  
Assessor's Block Numbers Shown in Ellipses

2007-0022321	08/26/2010	ASG
REVISION	DATE	TECH