

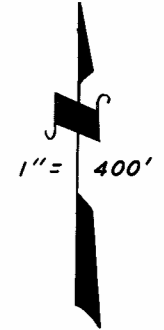
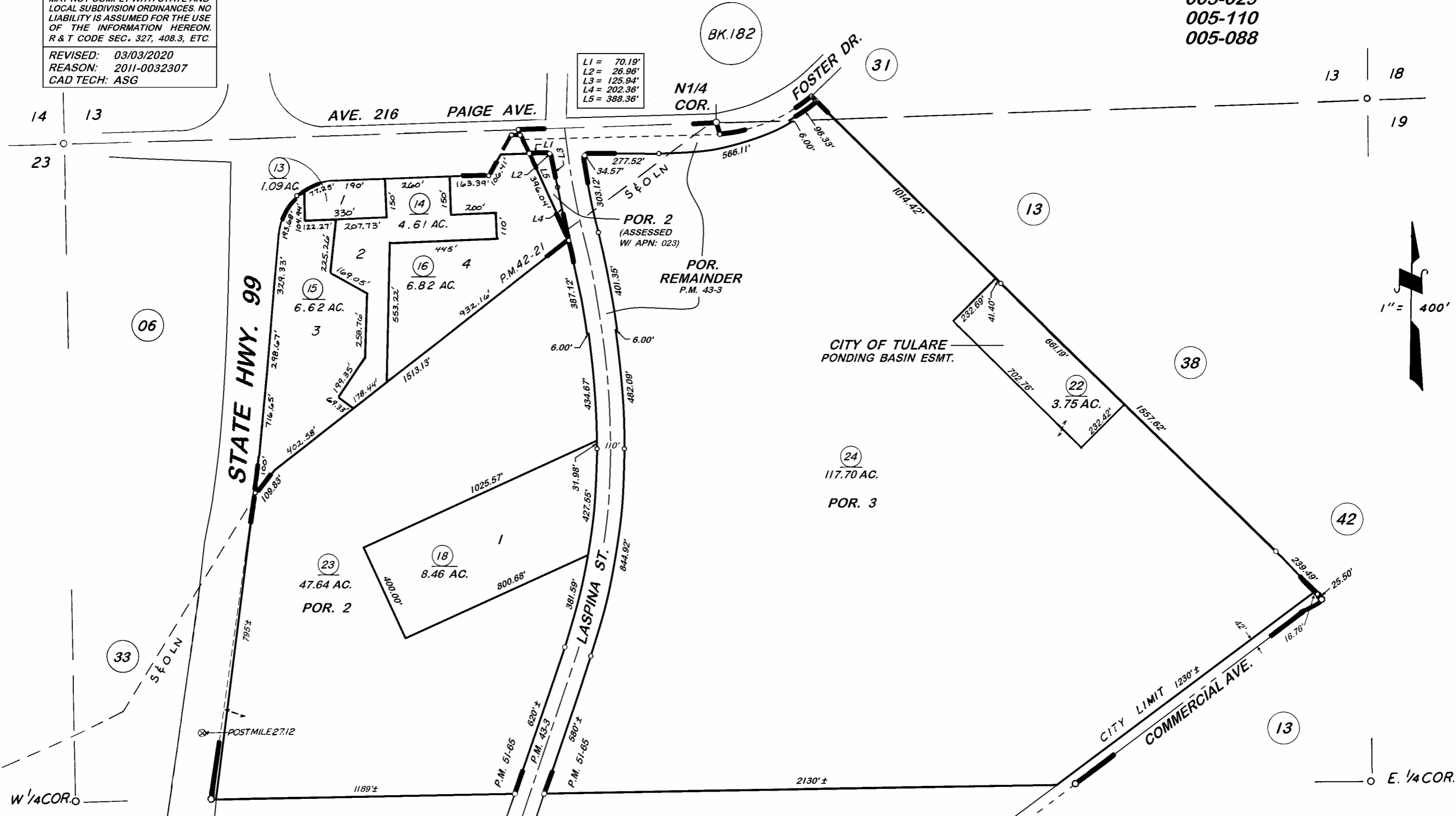
POR. N 1/2 SEC. 24, T.20S., R.24E., M.D.B.&M.
 POR. S 1/2 SEC. 13, T.20S., R.24E., M.D.B.&M.

TAX CODE AREA
 005-005
 005-028
 005-029
 005-110
 005-088

191-07

DISCLAIMER
 THIS MAP WAS PREPARED FOR LOCAL PROPERTY ASSESSMENT PURPOSES ONLY. THE PARCELS SHOWN HEREON MAY NOT COMPLY WITH STATE AND LOCAL SUBDIVISION ORDINANCES. NO LIABILITY IS ASSUMED FOR THE USE OF THE INFORMATION HEREON. R & T CODE SEC. 327, 408.3, ETC.
 REVISED: 03/03/2020
 REASON: 2011-0032307
 CAD TECH: ASG

L1 = 70.19'
 L2 = 26.96'
 L3 = 125.94'
 L4 = 202.36'
 L5 = 388.36'



PARCEL MAP 4117, P.M. 42-21
 POR. PARCEL MAP NO. 4199, P.M. 43-3
 POR. PARCEL MAP NO. 5059, P.M. 51-65

CITY OF TULARE
 ASSESSOR'S MAPS BK. 191, PG. 07.
 COUNTY OF TULARE, CALIF.

NOTE — ASSESSOR'S BLOCK NUMBERS SHOWN IN ELLIPSES
 ASSESSOR'S PARCEL NUMBERS SHOWN IN CIRCLES