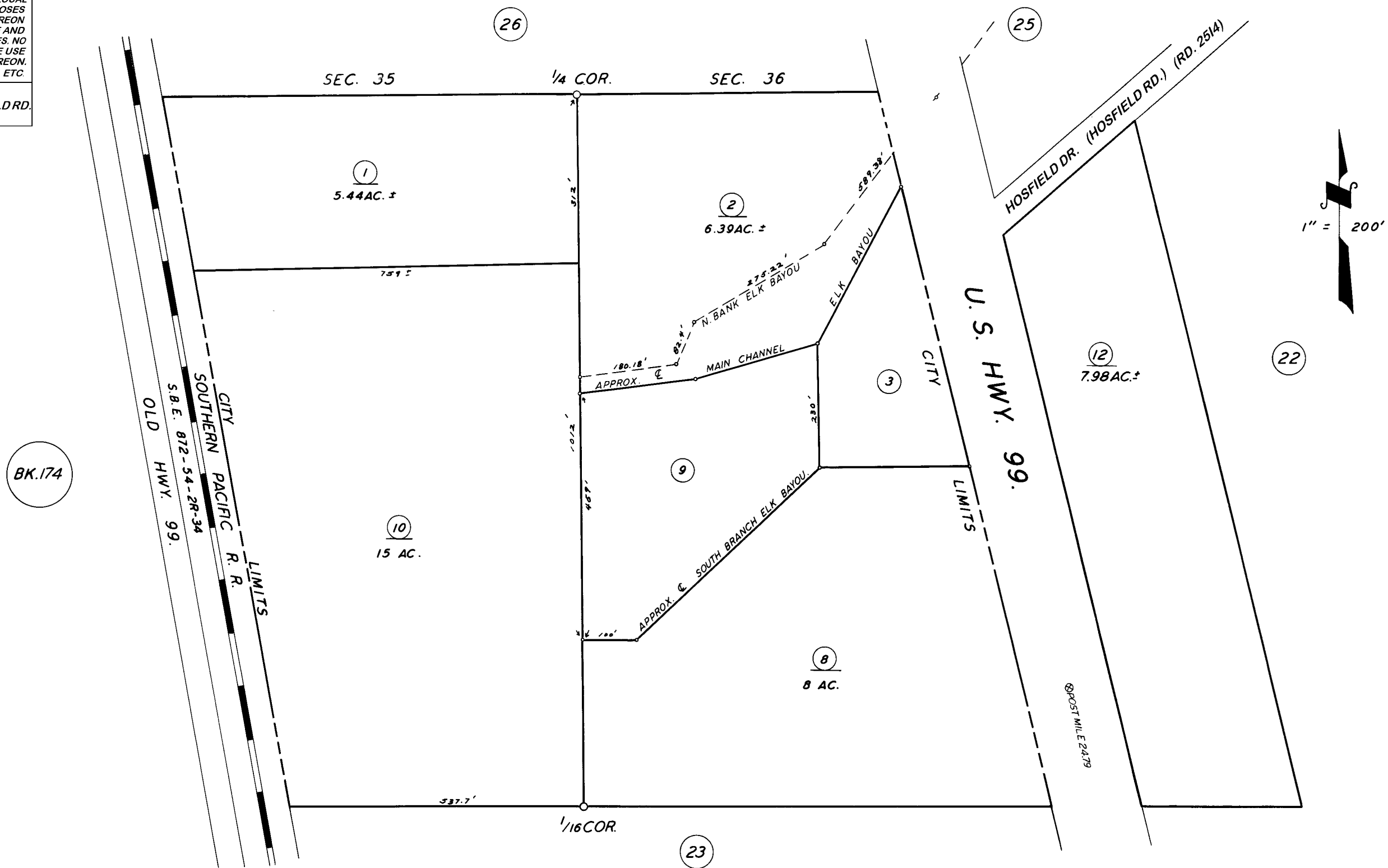


POR. NE 1/4 OF SE 1/4 SEC. 35, & POR. N 1/2 OF SW 1/4 SEC. 36, T.20S., R.24E.,  
M. D. B. & M.

TAX CODE AREA **191-24**  
5-000  
5-003  
149-001

**DISCLAIMER**  
THIS MAP WAS PREPARED FOR LOCAL PROPERTY ASSESSMENT PURPOSES ONLY. THE PARCELS SHOWN HEREON MAY NOT COMPLY WITH STATE AND LOCAL SUBDIVISION ORDINANCES. NO LIABILITY IS ASSUMED FOR THE USE OF THE INFORMATION HEREON. R & T CODE SEC. 327, 408.3, ETC.  
REVISED: 12/14/2015  
REASON: RENAME HOSFIELD RD.  
CAD TECH: ARL



ASSESSOR'S MAPS BK. 191, PG. 24.  
COUNTY OF TULARE, CALIF.

NOTE — ASSESSOR'S BLOCK NUMBERS SHOWN IN ELLIPSES  
ASSESSOR'S PARCEL NUMBERS SHOWN IN CIRCLES

